

LOWER SAVANNAH - SALKEHATCHIE RIVER BASIN AGRICULTURE OVERVIEW

Dr. Nathan Smith & Trey Buckelew



COOPERATIVE EXTENSION
College of Agriculture, Forestry and Life Sciences

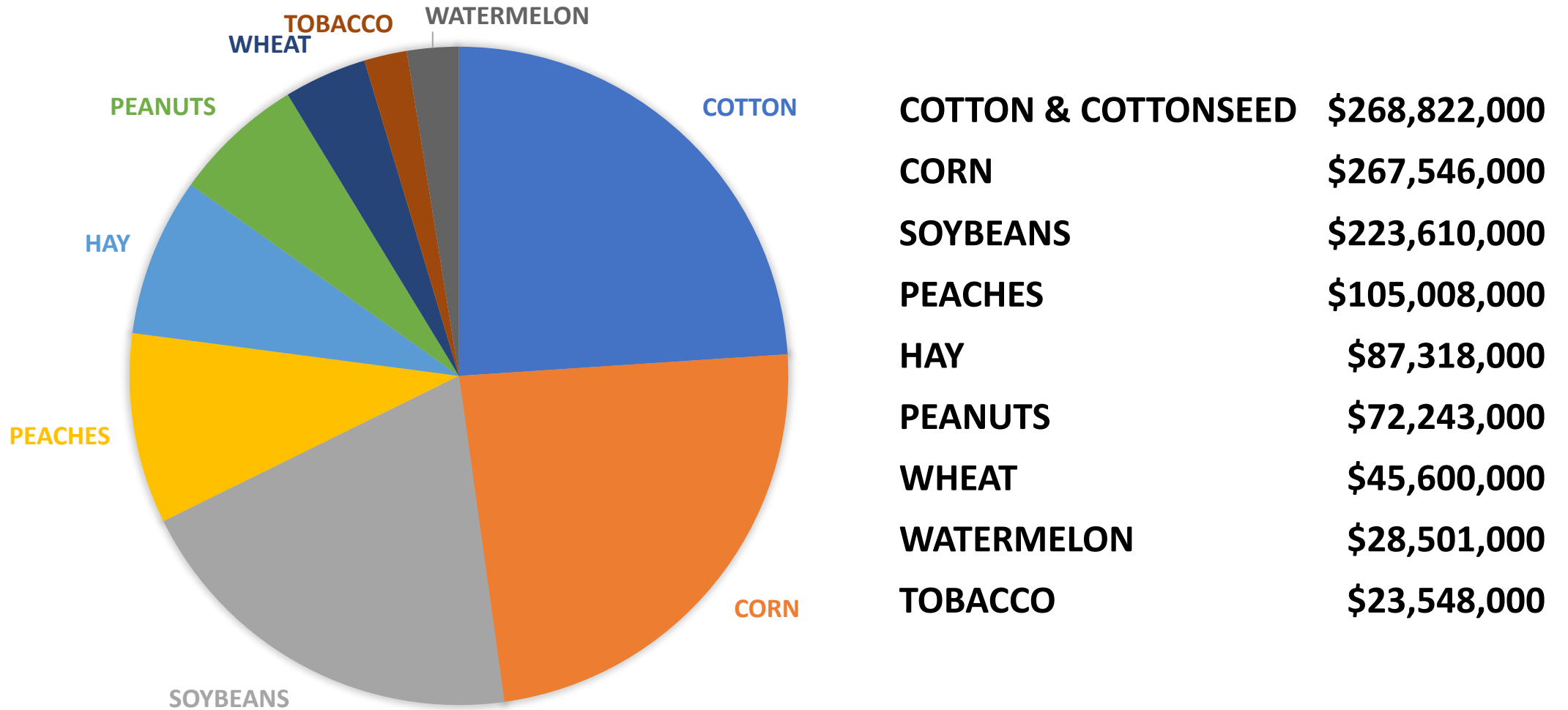


**Protecting
our agriculture
and food**

South Carolina Agriculture

- 2022 Ag Census counted 22,633 farms (down 8.7% from 2017) on 4.55 million acres of farmland (down 4.0% from 2017).
- Poultry is the top commodity in cash value, chickens, eggs and turkey totaling over a billion in production value. Beef, dairy, swine, horses, aquaculture, goats, bees, and specialty animals are vitally important to South Carolina agriculture.
- The state's fruits and vegetables are a big part of the state's agricultural production with peaches, leafy greens, tomatoes and watermelon leading state rankings. South Carolina peaches ranked 2nd nationally.
- Field crops including corn, cotton, soybeans, peanuts, tobacco and wheat are grown on over 1.3 million acres.
- The state's green industry including ornamental horticulture, floriculture, nursery, and turf grass ranks as South Carolina's second largest agricultural industry cluster in cash value.

SC MAJOR CROPS BY VALUE OF PRODUCTION, 2022



Source: USDA National Agricultural Statistics Service, (Peaches Value estimated using previous 2 years price)

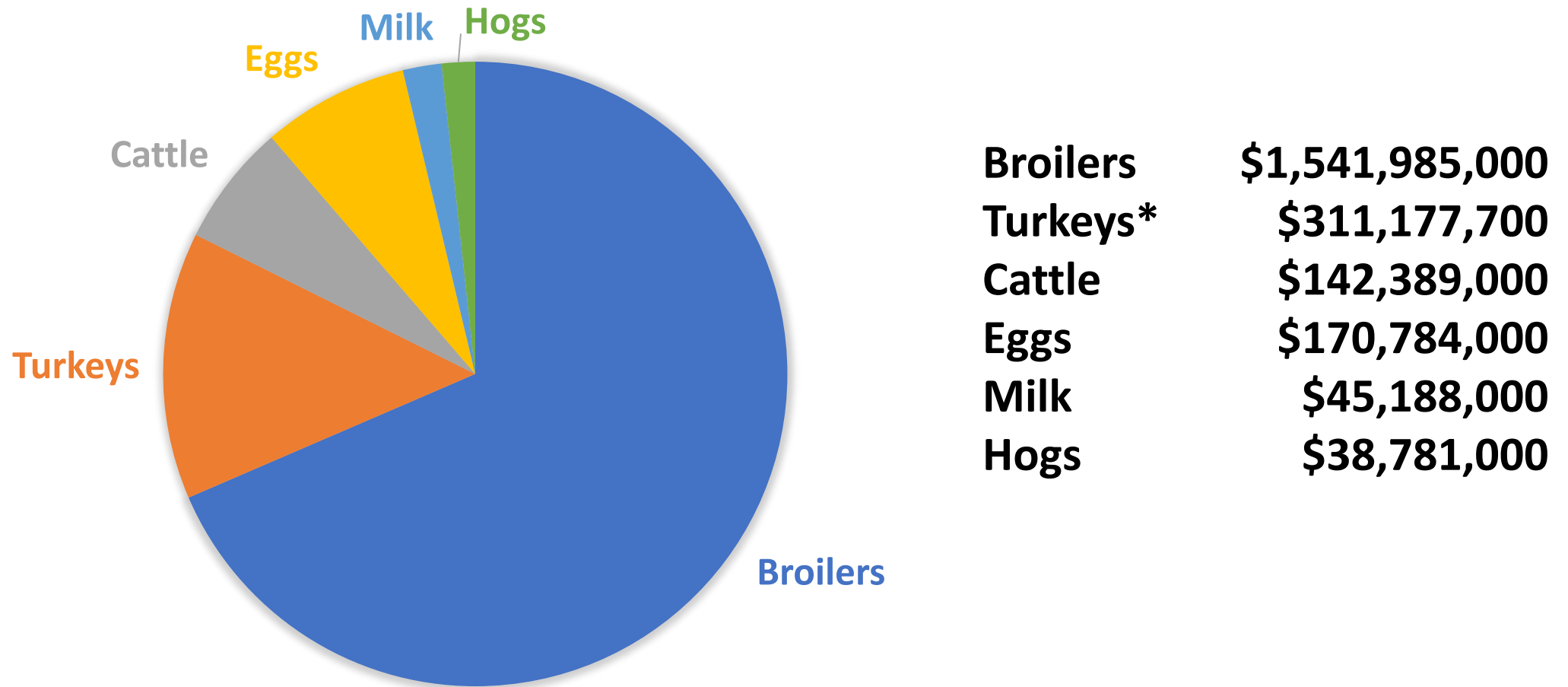


SC FARM & LIVESTOCK OVERVIEW

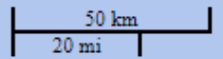
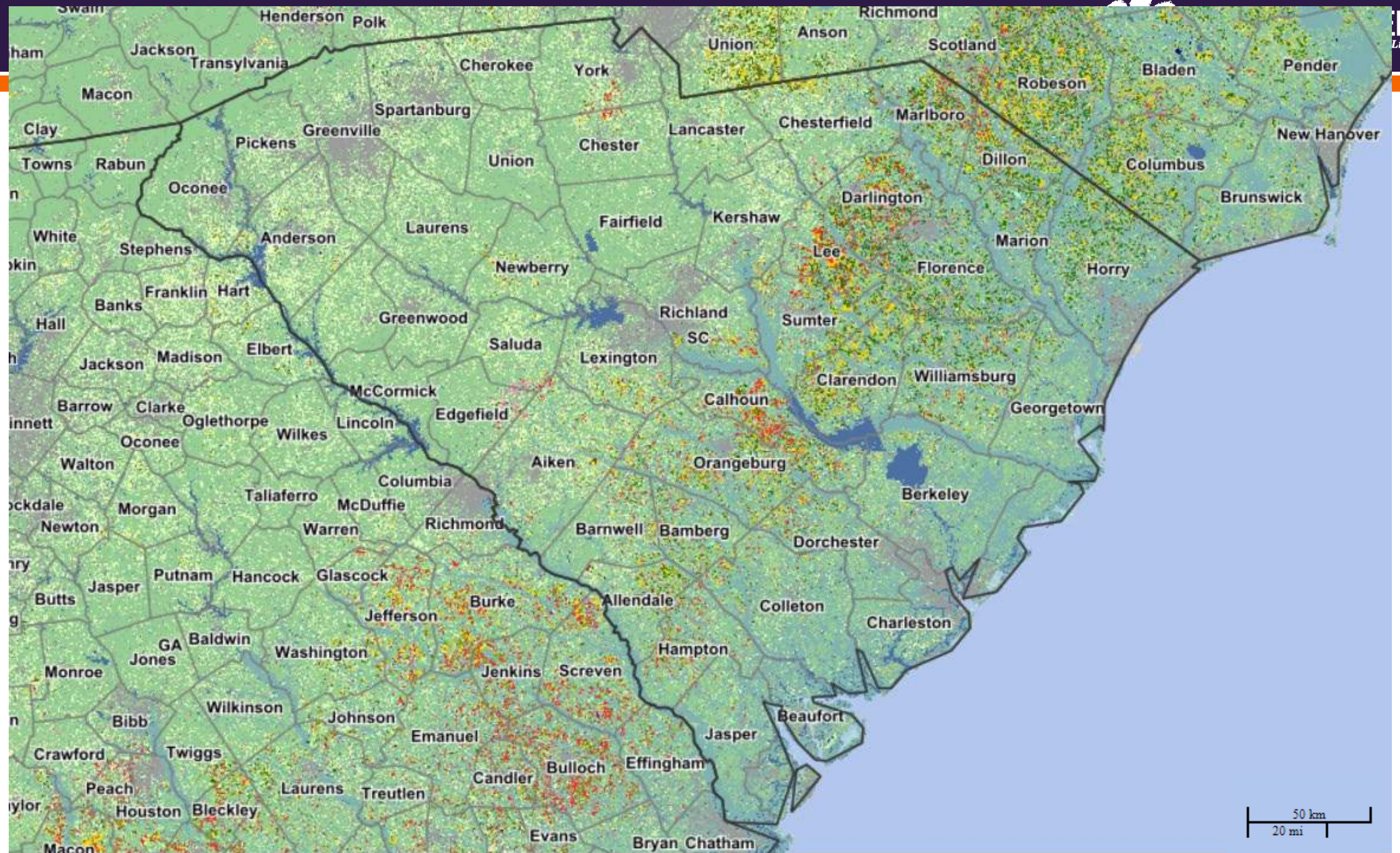
Farms Operations†	
Farm Operations - Area Operated, Measured in Acres / Operation	204
Farm Operations - Number of Operations	22,600
Farm Operations - Acres Operated	4,600,000
Livestock Inventory †	
Cattle, Cows, Beef - Inventory (First of Jan. 2024)	148,000
Cattle, Cows, Milk - Inventory (First of Jan. 2024)	8,000
Cattle, Incl Calves - Inventory (First of Jan. 2024)	290,000
Goats, Meat & Other - Inventory (First of Jan. 2024)	31,000
Goats, Milk - Inventory (First of Jan. 2024)	2,900
Hogs - Inventory (First of Dec. 2023)	122,000
Chickens, Broilers - Production, Measured in Head (2020)	243,600,000
Turkeys - Production, Measured in Head* (2024)	9,000,000
Milk Production †	
Milk - Production, Measured in Lb / Head (2023)	18,500
Milk - Production, Measured in Lb (2023)	148,000,000

NASS estimates, *Non-NASS estimate

SC LIVESTOCK & POULTRY BY VALUE, 2023

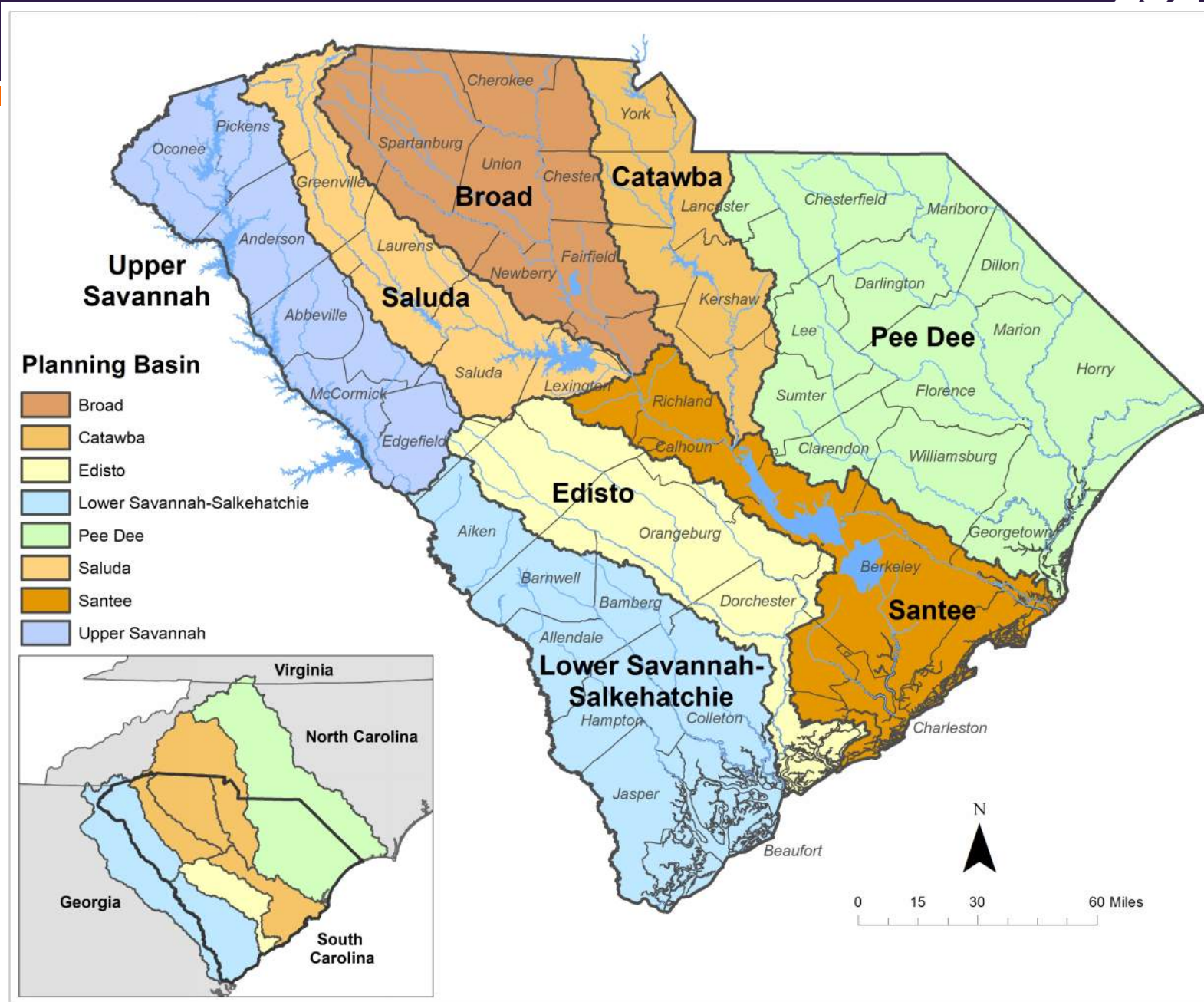


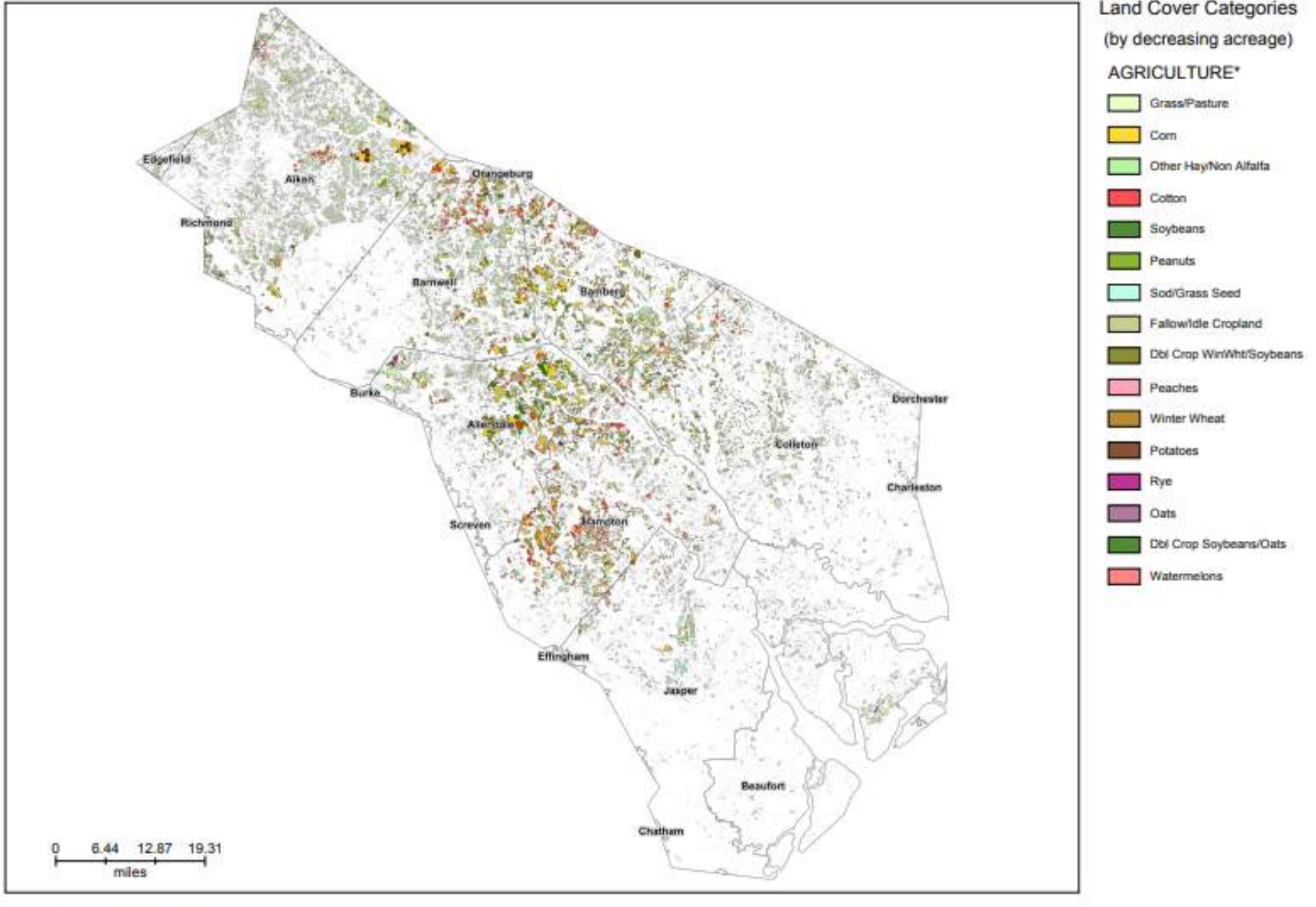
Source: USDA National Agricultural Statistics Service, (*Turkeys estimated by Clemson Extension*)



Forestry

- Forestland makes up nearly 70% of the state's total land area.
- Private owners hold a combined 88% of the state's timberland area with private individuals controlling over half of those acres.
- Forestry is #1 among manufacturing industries in the state with a total economic impact of around \$17 billion annually.
- South Carolina exports \$1.4 billion in forest products each year. Timber is the state's #1 renewable commodity at \$759 million annually.





Produced by CropScape - <http://cropdata.usda.gov/CropScape>

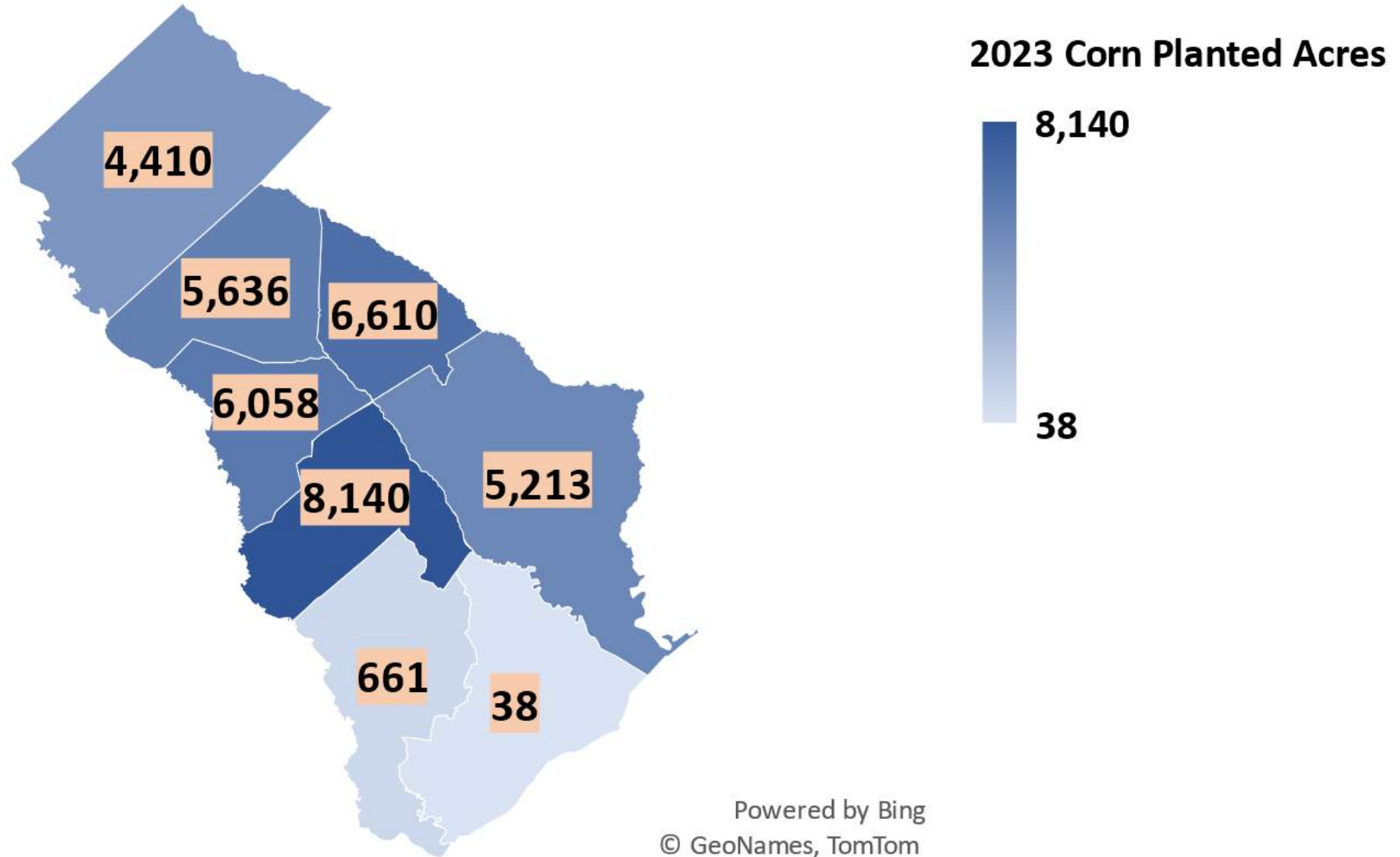
* Only top 16 agriculture categories are listed.

USDA NASS CropScape – Rough Map of Lower Savannah-Salkehatchie River Basin

Crop	2022 Ag Census	2022 NASS Survey	2023 CropScape Acreage
Corn	34,623	25,720	60,465.5
Grass/Pasture	14,990		151,618.7
Other Hay/Non Alfalfa	30,512		51,950.3
Cotton	46,295	35,950	43,708.8
Soybeans	24,251	22,280	34,531.4
Peanuts	16,795	19,120	22,690.5
Fallow/Idle Cropland			11,316.6
Sod/Grass Seed	339		12,785.5
Dbl Crop Wht/Soybeans			4,151.9
Sorghum	90		174.8
Peaches	1,877		2,612.7
Potatoes	6		1,785.8
Winter Wheat	5,679		1,792.5

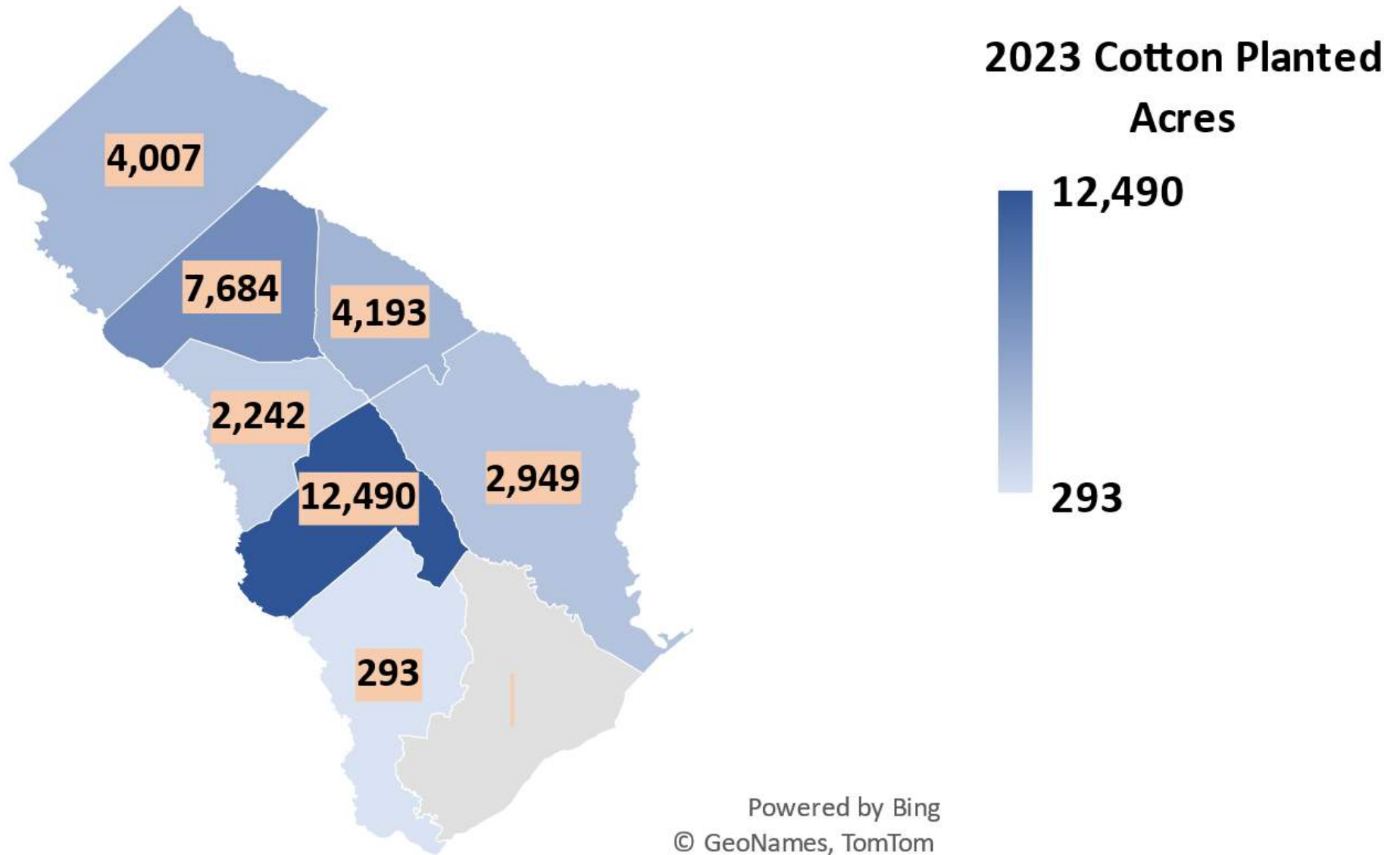


2023 Corn Planted Acres from FSA



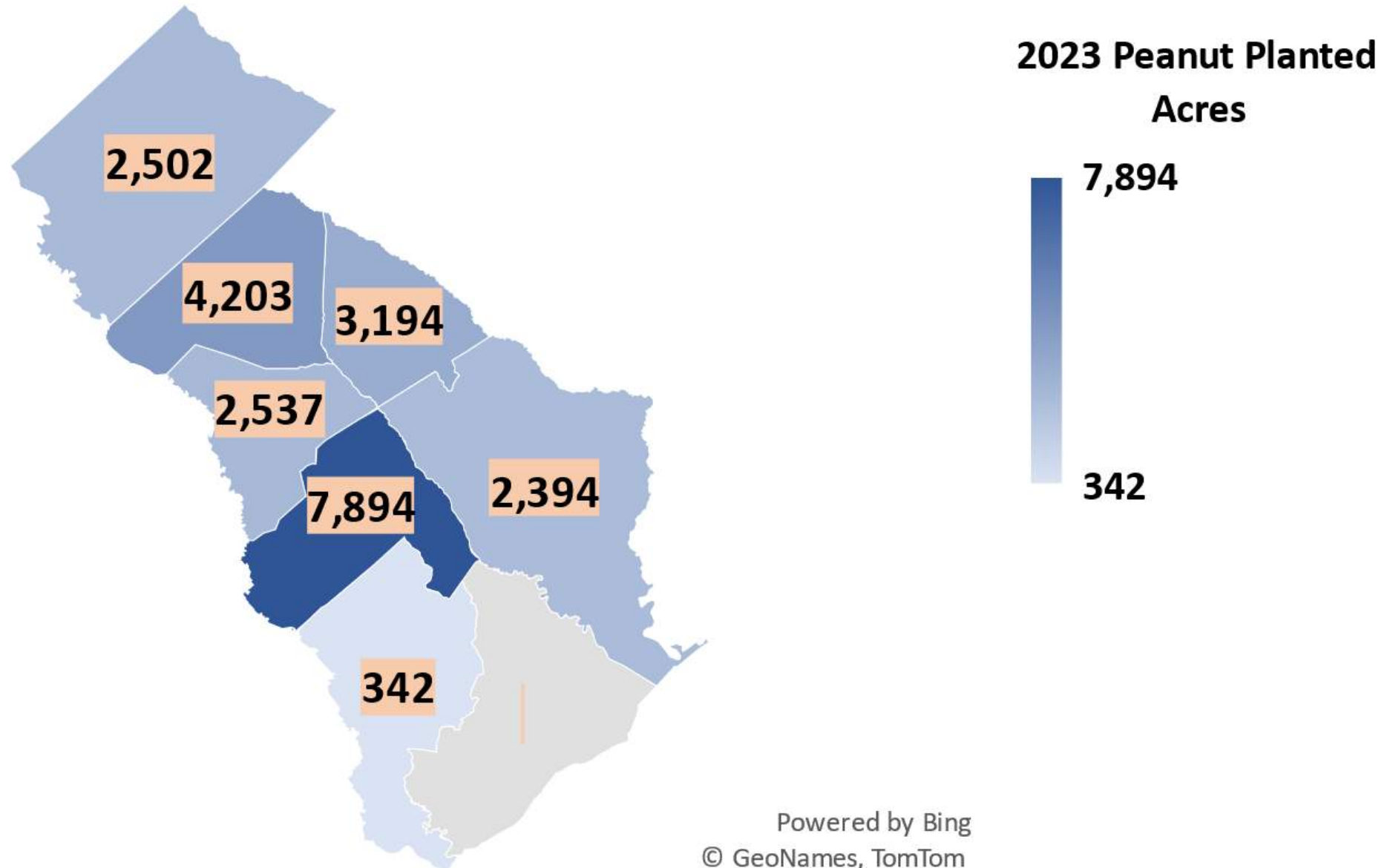
Source: 2023 Certified Crop Acreage, USDA FSA

2023 Cotton Planted Acres from FSA



Source: 2023 Certified Crop Acreage, USDA FSA

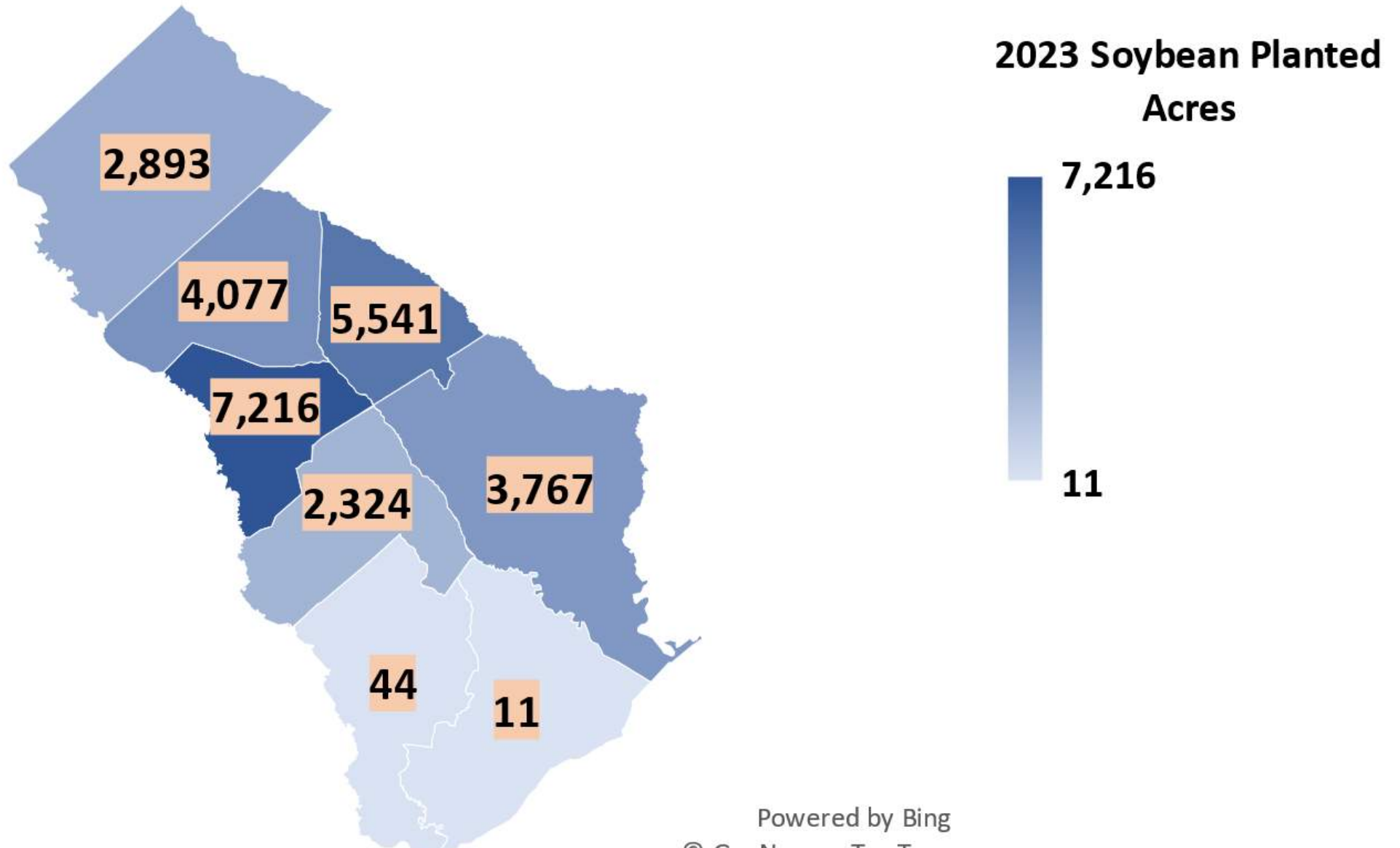
2023 Peanut Planted Acres from FSA



Source: 2023 Certified Crop Acreage, USDA FSA

Powered by Bing
© GeoNames, TomTom

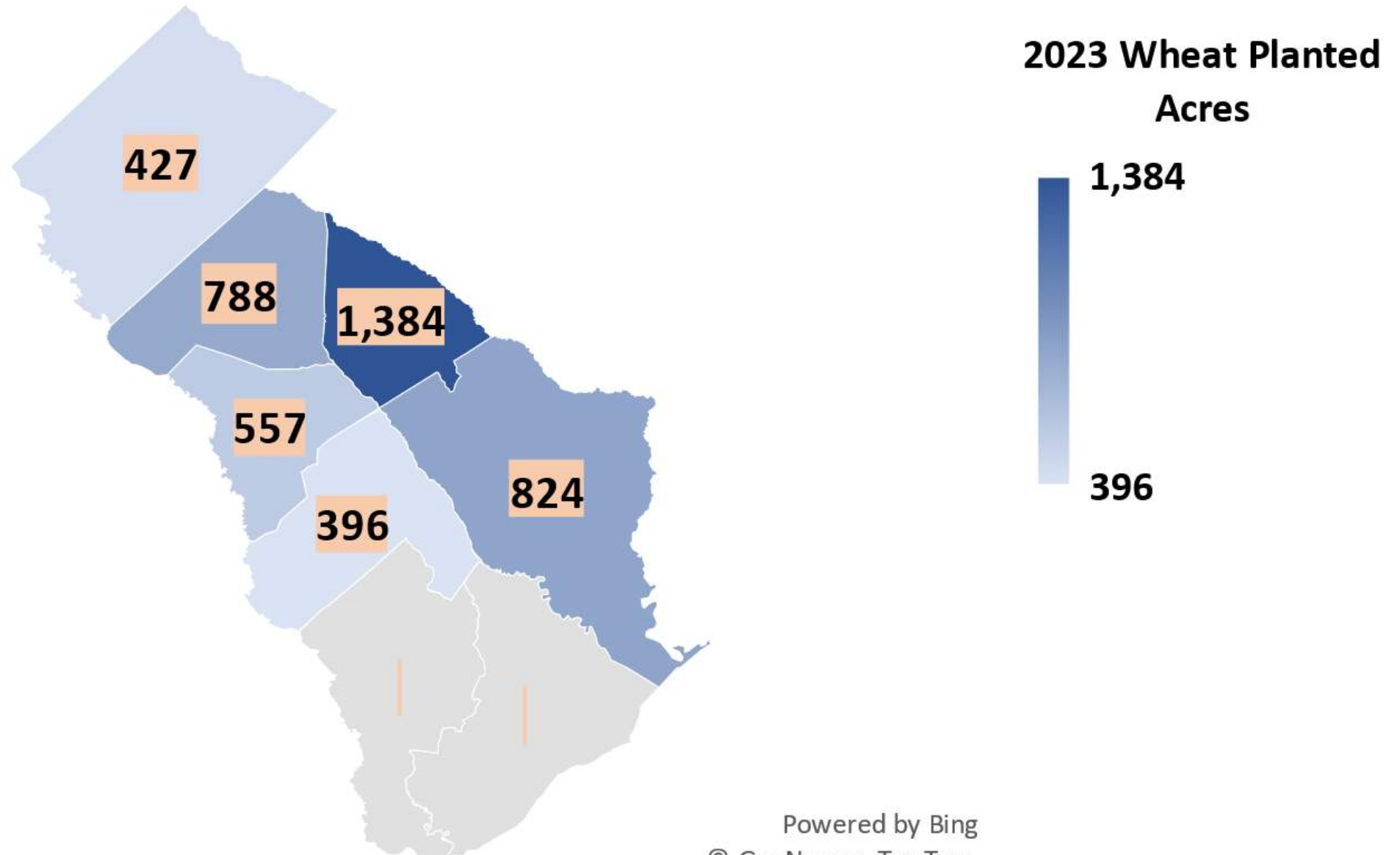
2023 Soybean Planted Acres from FSA



Source: 2023 Certified Crop Acreage, USDA FSA

Powered by Bing
© GeoNames, TomTom

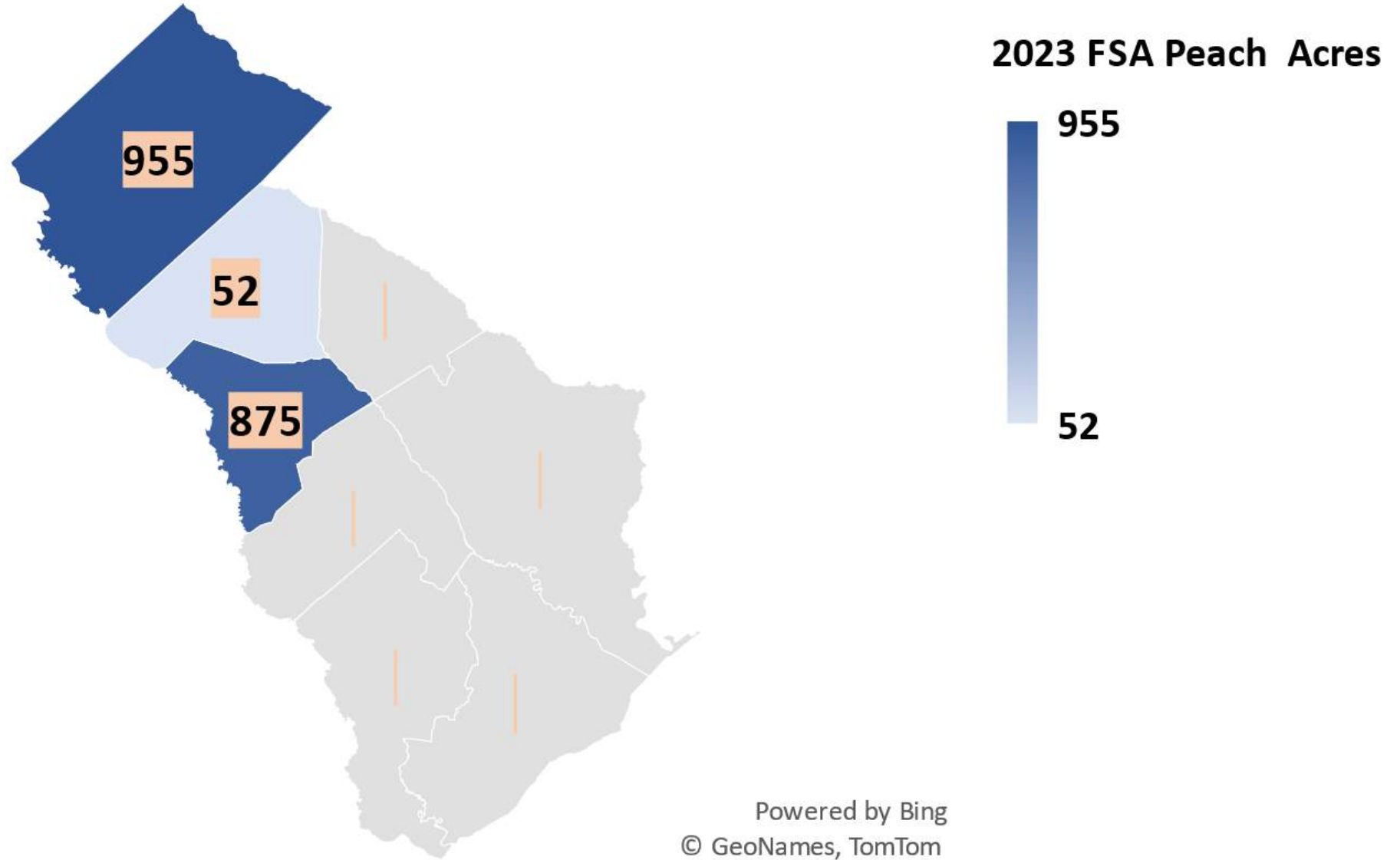
2023 Wheat Planted Acres from FSA



Source: 2023 Certified Crop Acreage, USDA FSA

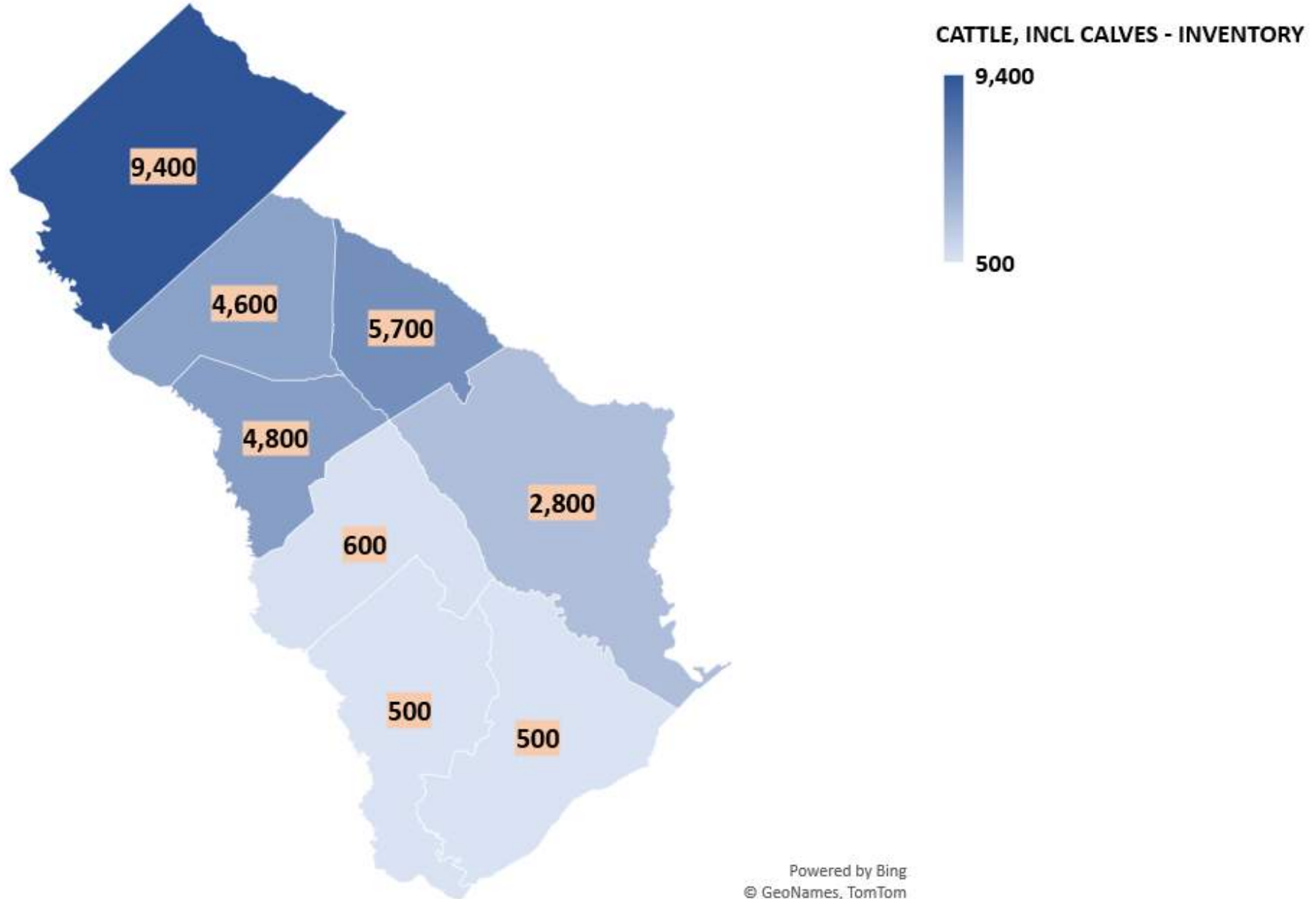
Powered by Bing
© GeoNames, TomTom

2023 Peach Acres from FSA



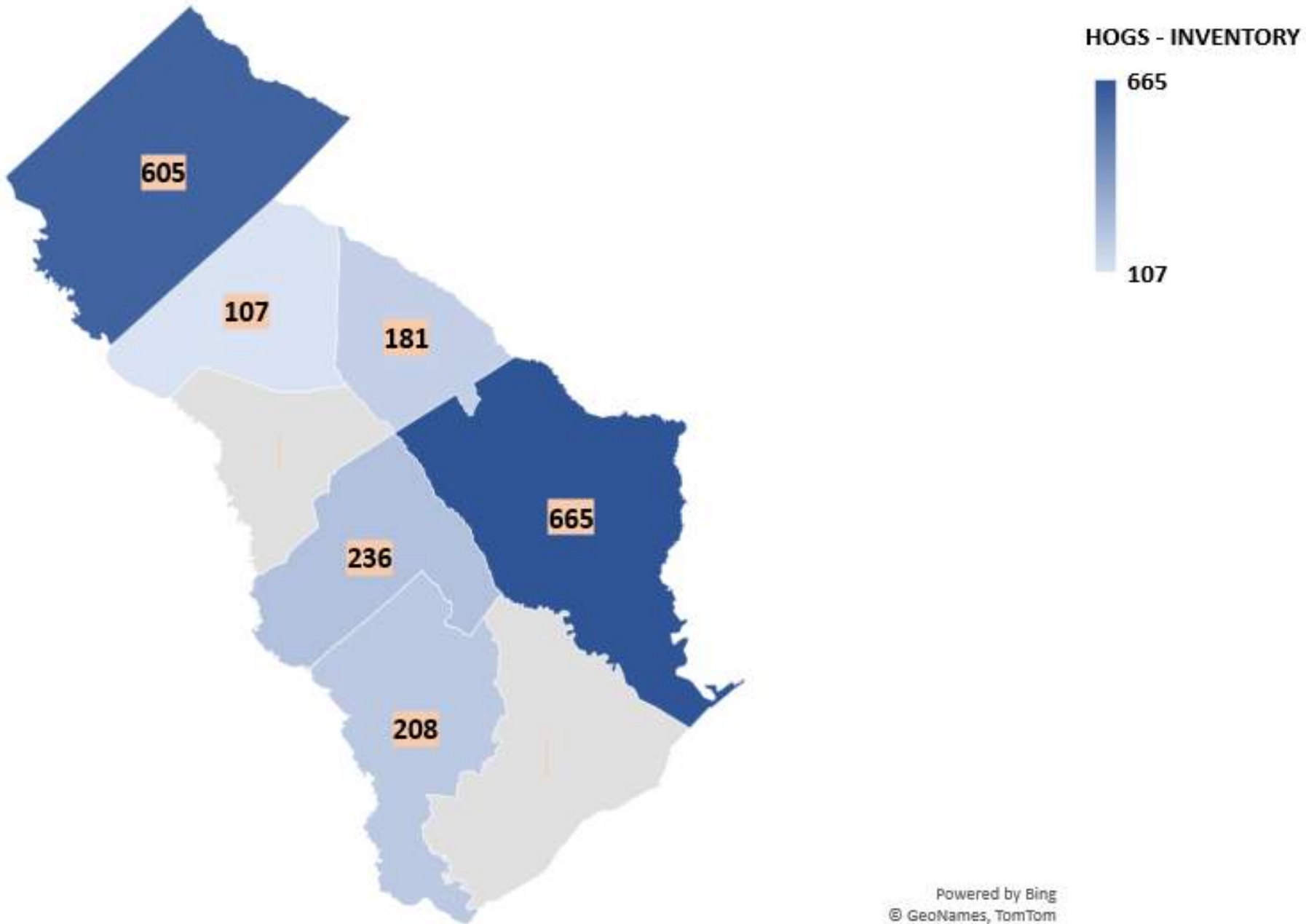
Source: 2023 Certified Crop Acreage, USDA FSA

2023 Cattle Inventory (Including Calves) from NASS



Source: USDA National Agricultural Statistics Service

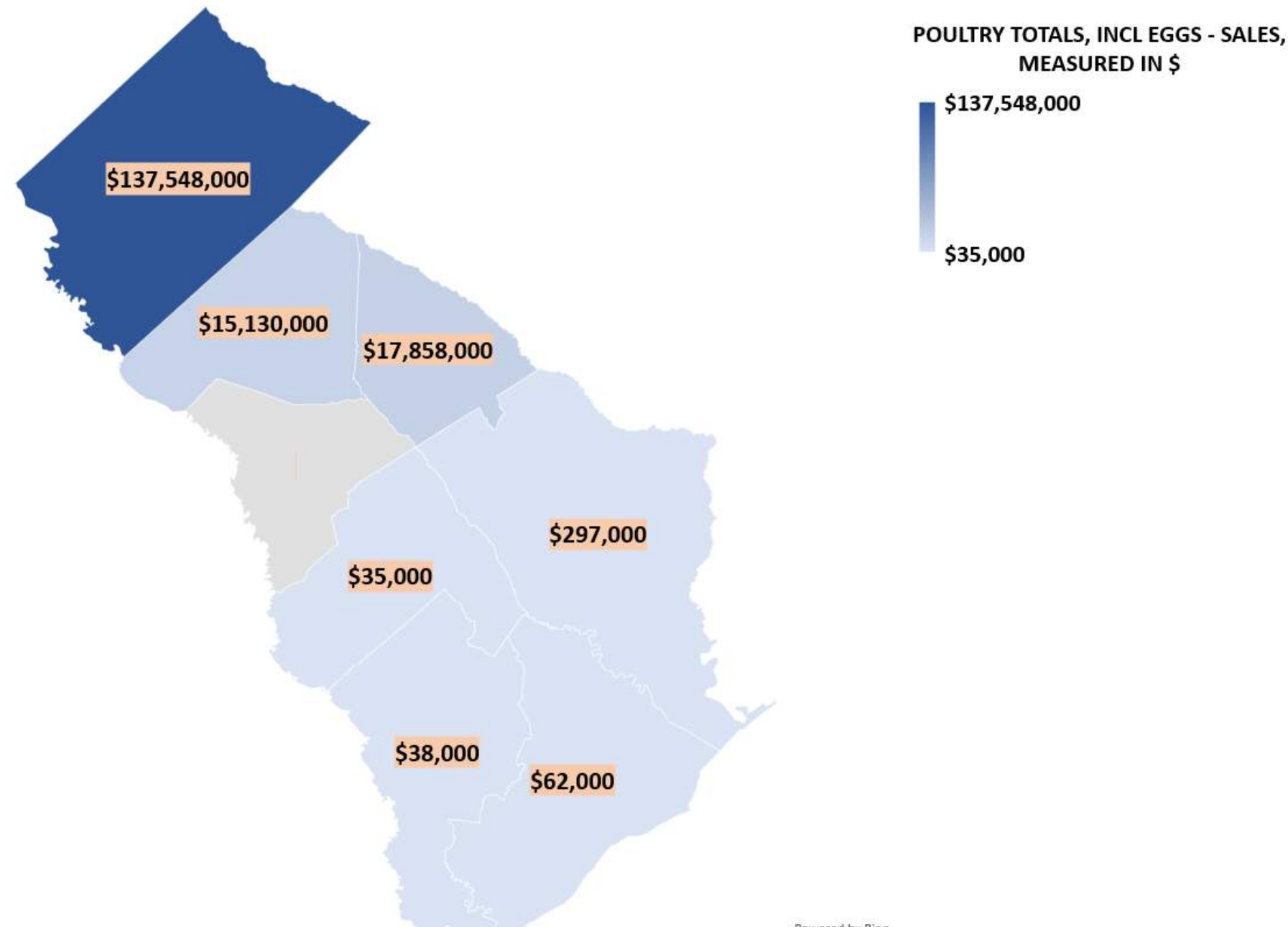
2022 Hog Inventory from NASS



Powered by Bing
© GeoNames, TomTom

Source: USDA National Agricultural Statistics Service

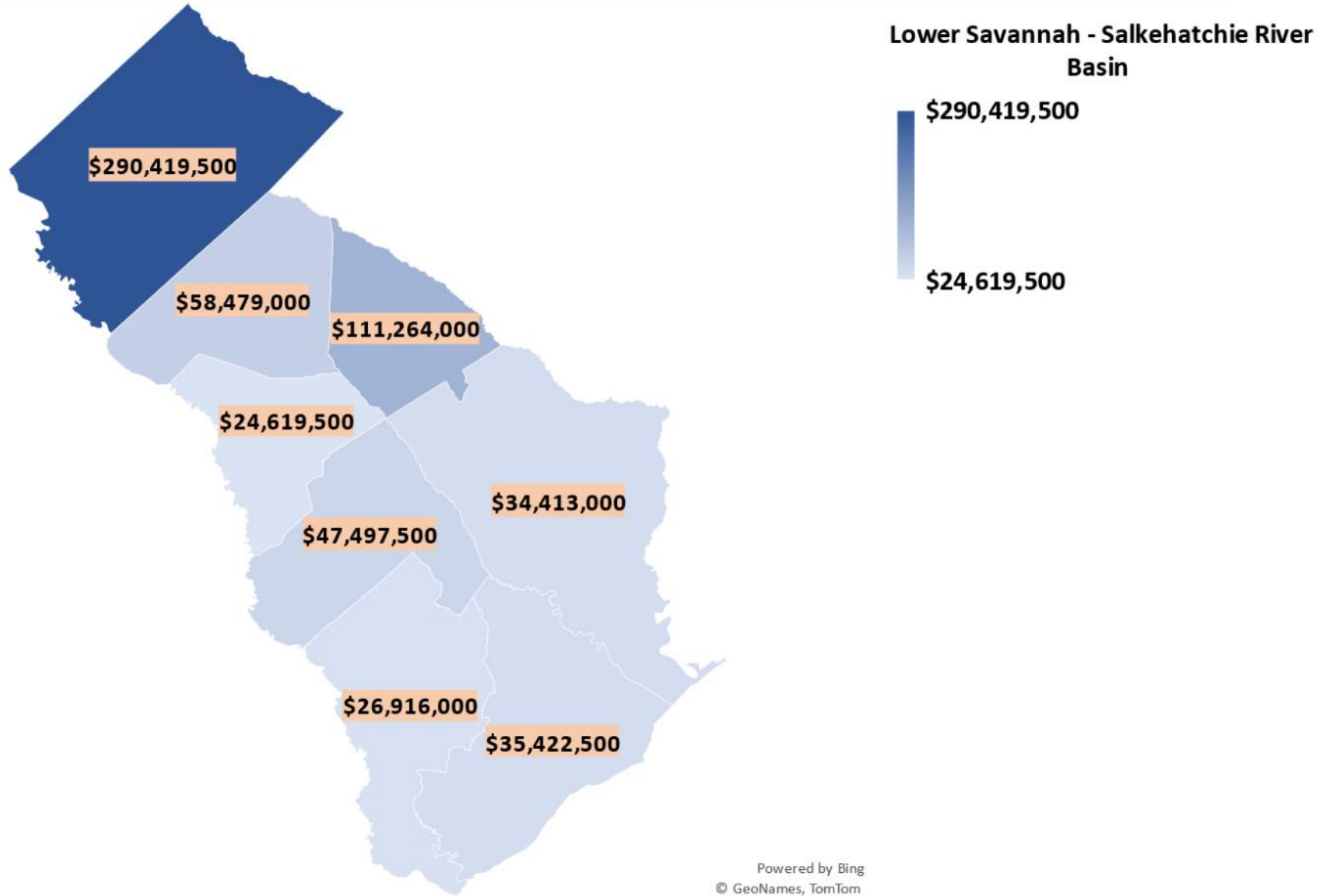
2022 Poultry Total Sales (Including Eggs) Measured in \$ from NASS



Source: USDA National Agricultural Statistics Service

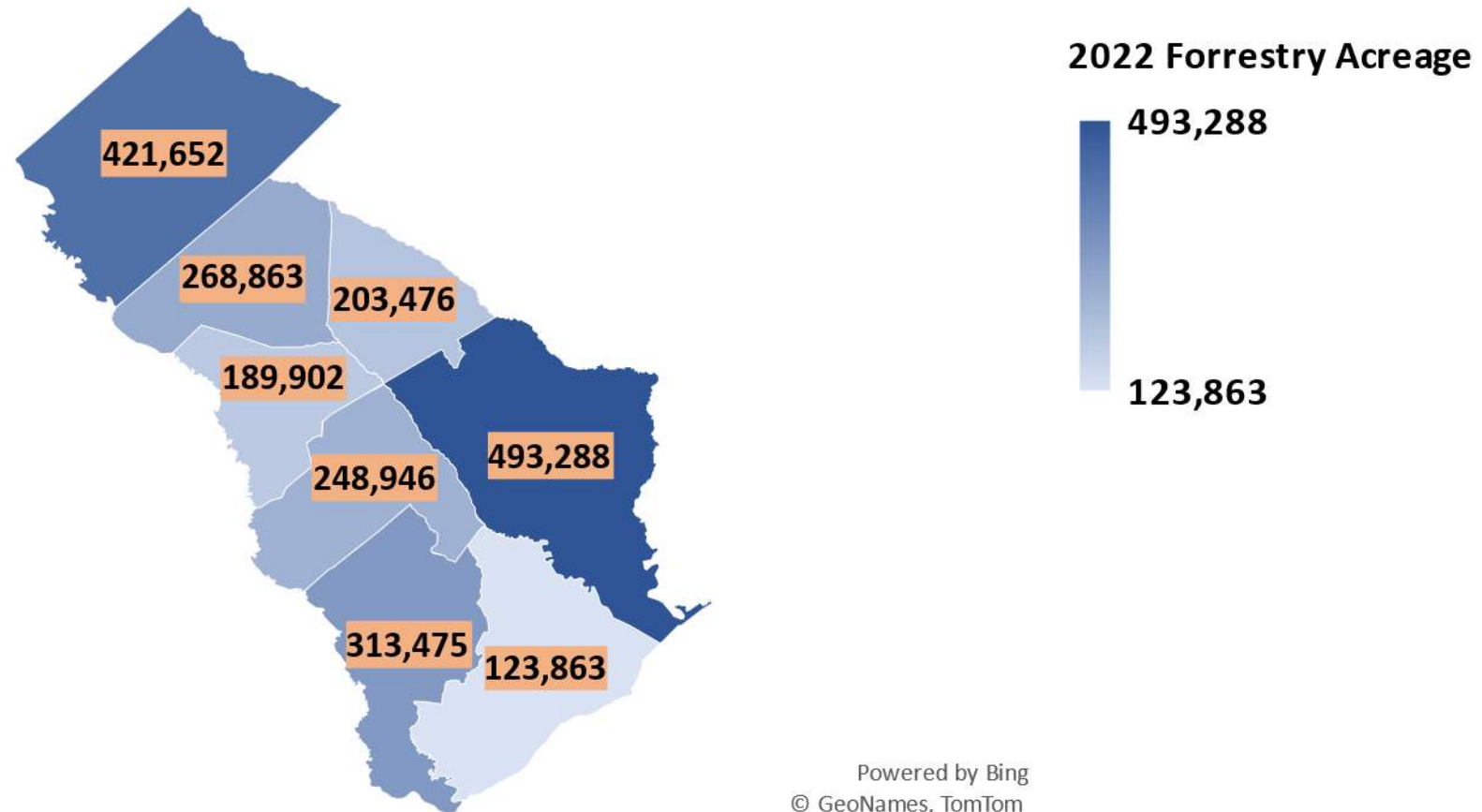
Powered by Bing
© GeoNames, TomTom

Lower Savannah - Salkehatchie River Basin 2022 Market Value of Products Sold by County Total Value X 1.5 Multiplier: \$629,031,000



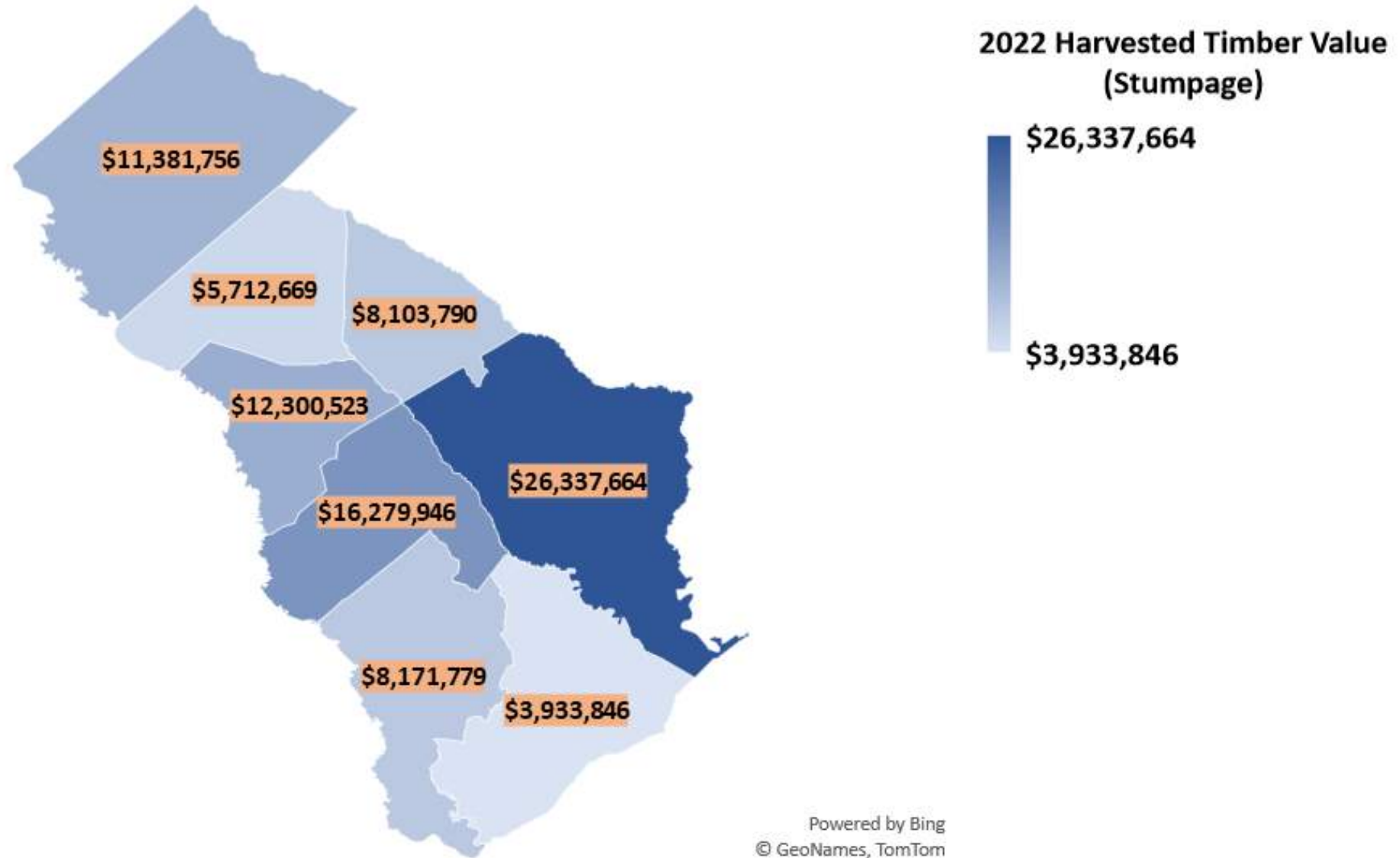
Source: 2022 Ag Census, USDA NASS

2022 Forestry Acreage in the Lower Savannah -Salkehatchie River Basin



Source: 2023 SC Forestry Commission

2022 Harvested Timber Value (Stumpage) in the Lower Savannah-Salkehatchie River Basin



Source: 2023 Forestry Commission

Lower Savannah - Salkehatchie River Basin Counties

FSA Certified Crop Acres

	Non-Irr Acres	Irr Acres	Total Acres	Non-Irr %	Irr %	SC Non-Irr %	SC Irr %
Corn	17,344	10,983	36,766	53%	47%	75%	25%
Cotton	26,277	7,580	33,858	69%	31%	83%	17%
Peanuts	15,994	7,072	23,066	69%	31%	71%	29%
Soybeans	20,832	5,041	25,872	81%	19%	93%	7%
Wheat	10,842	683	11,525	94%	6%	92%	8%

THANK YOU



COOPERATIVE EXTENSION
College of Agriculture, Forestry and Life Sciences

Clemson University Extension Agribusiness Team
<http://www.clemson.edu/extension/agribusiness>

Nathan Smith, PhD.

Extension Economist, Assistant Director CU-CAT

Sandhill Research and Education Center

229-392-3948 (m)

nathan5@clemson.edu

THANK YOU

SOUTHERN AG TODAY DAILY

SC AgriWellness - Giving You a Hand When You Need it Most



Free counseling services for farmers and farm families

Call 1-800-968-8143 to be connected with a trained professional

<https://www.scfb.org/farmstress>



<https://southernagtoday.org/>