

# Groundwater Resources of the Edisto Basin

Joe Gellici

Hydrogeologist

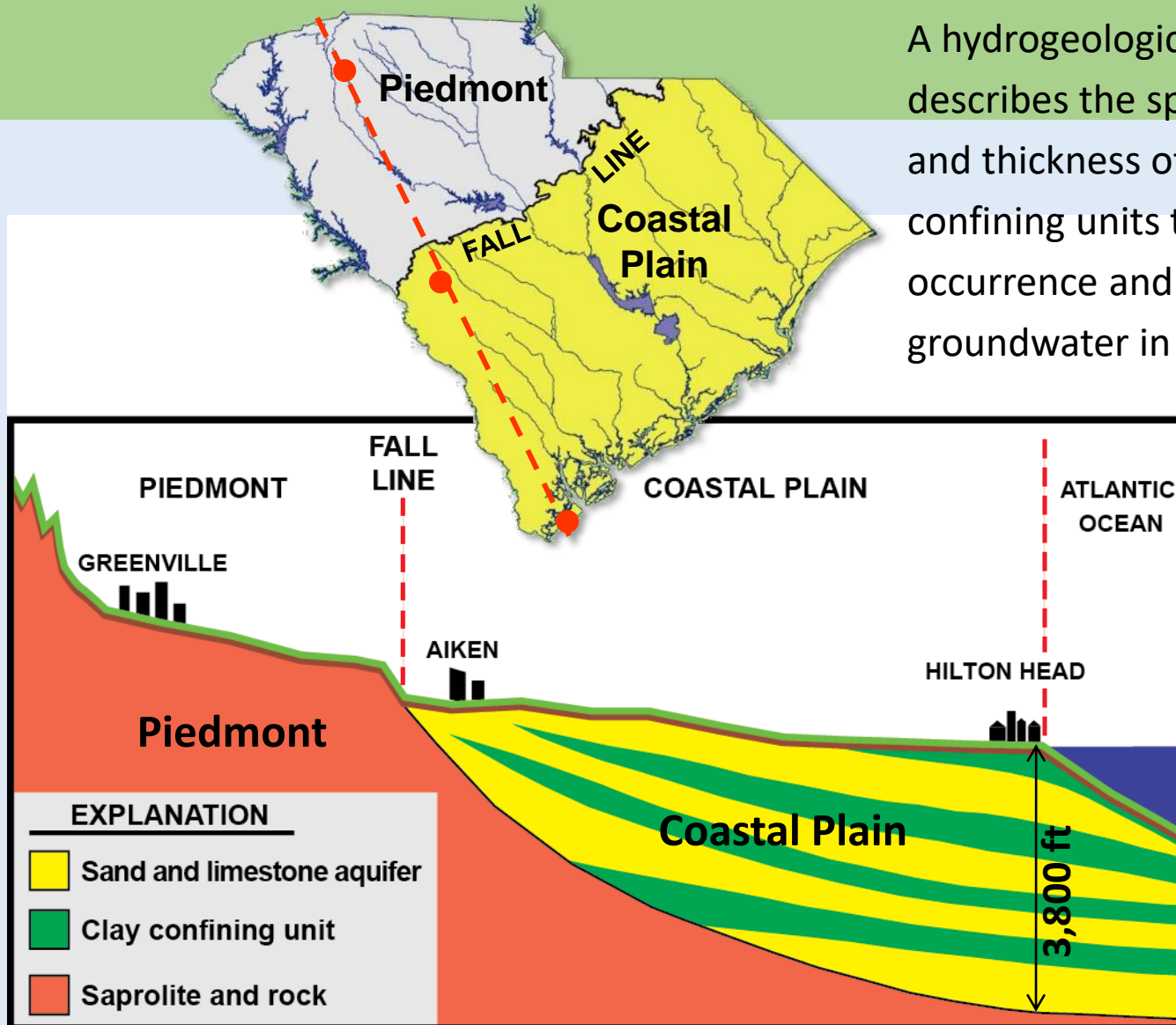
S.C. Department of Natural Resources  
Land, Water and Conservation Division



Edisto River Basin Council Meeting #13  
Edisto Research and Education Center – Clemson University  
Blackville, SC  
June 23<sup>rd</sup>, 2021

# Hydrogeologic Framework

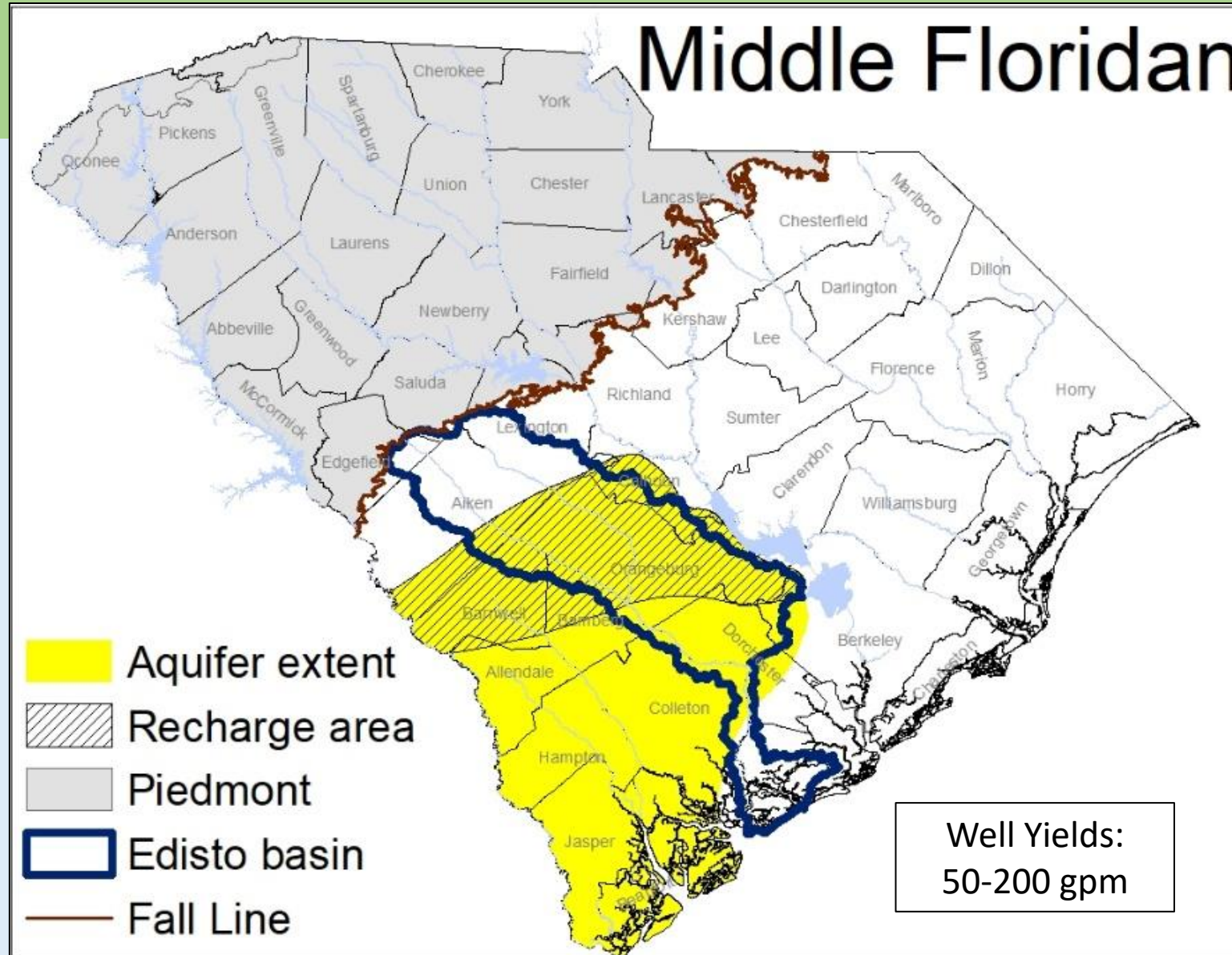
A hydrogeologic framework describes the spatial distribution and thickness of the aquifers and confining units that control the occurrence and availability of groundwater in the Coastal Plain.



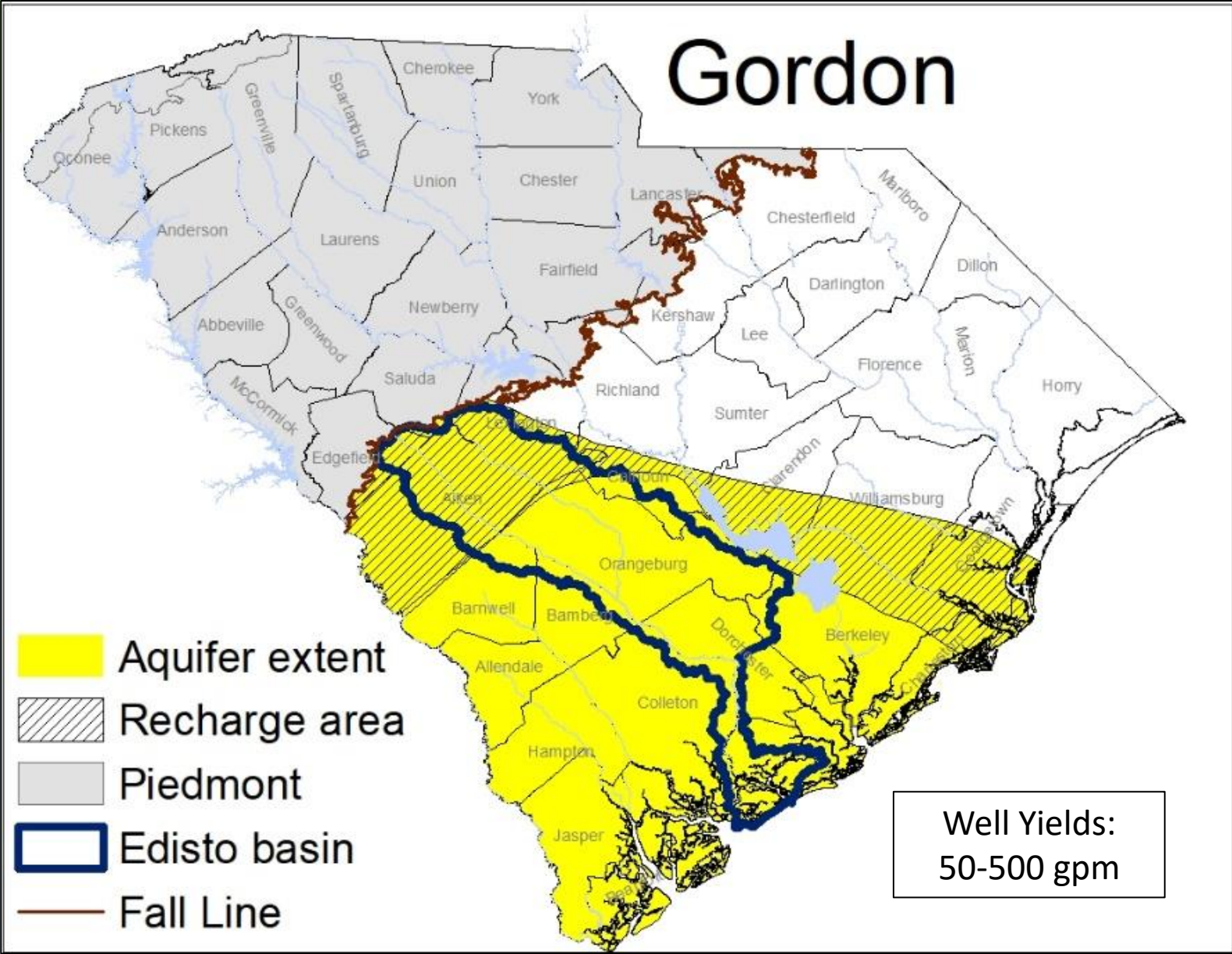
# Hydrogeologic Framework Edisto River Basin



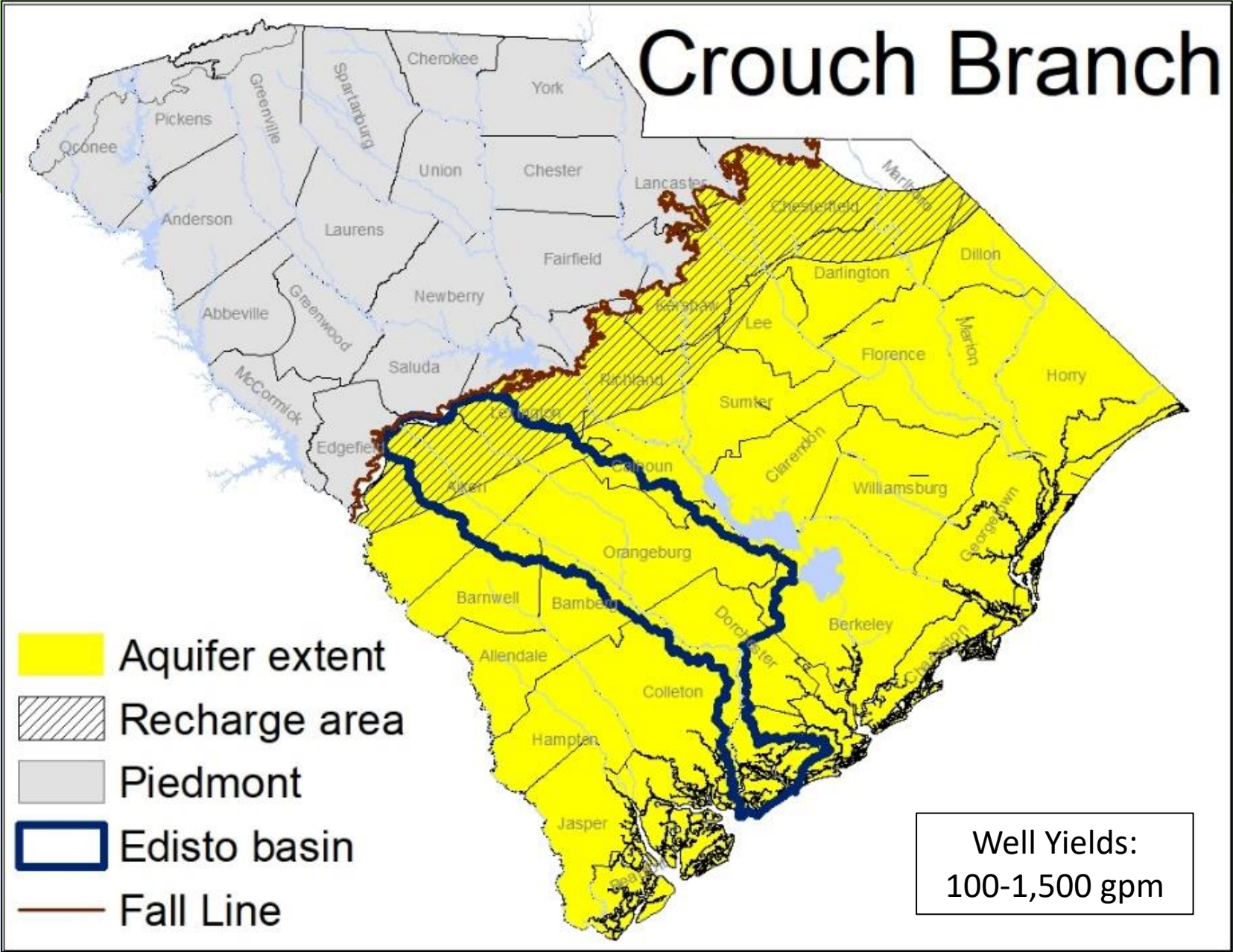
# Middle Floridan



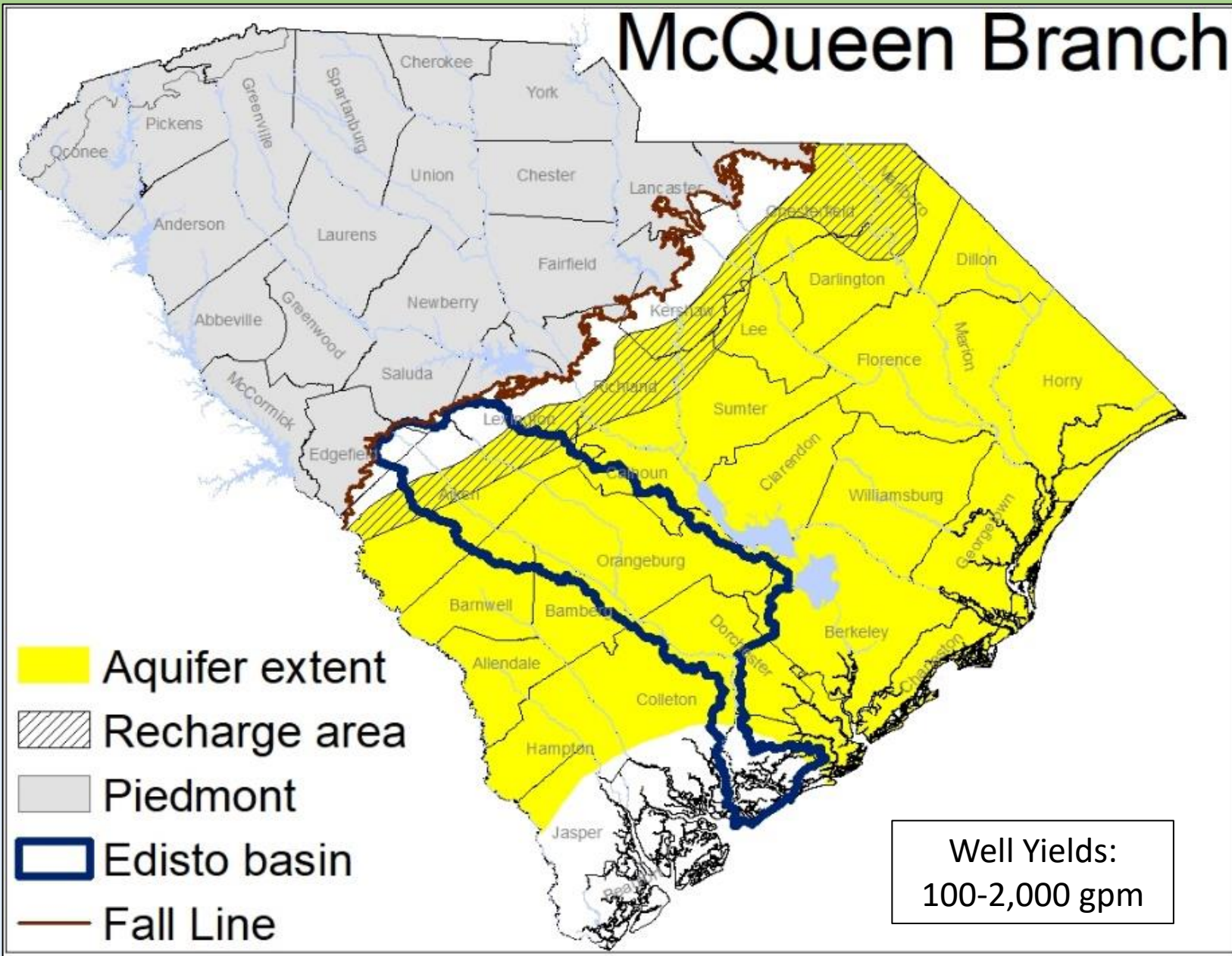
# Gordon



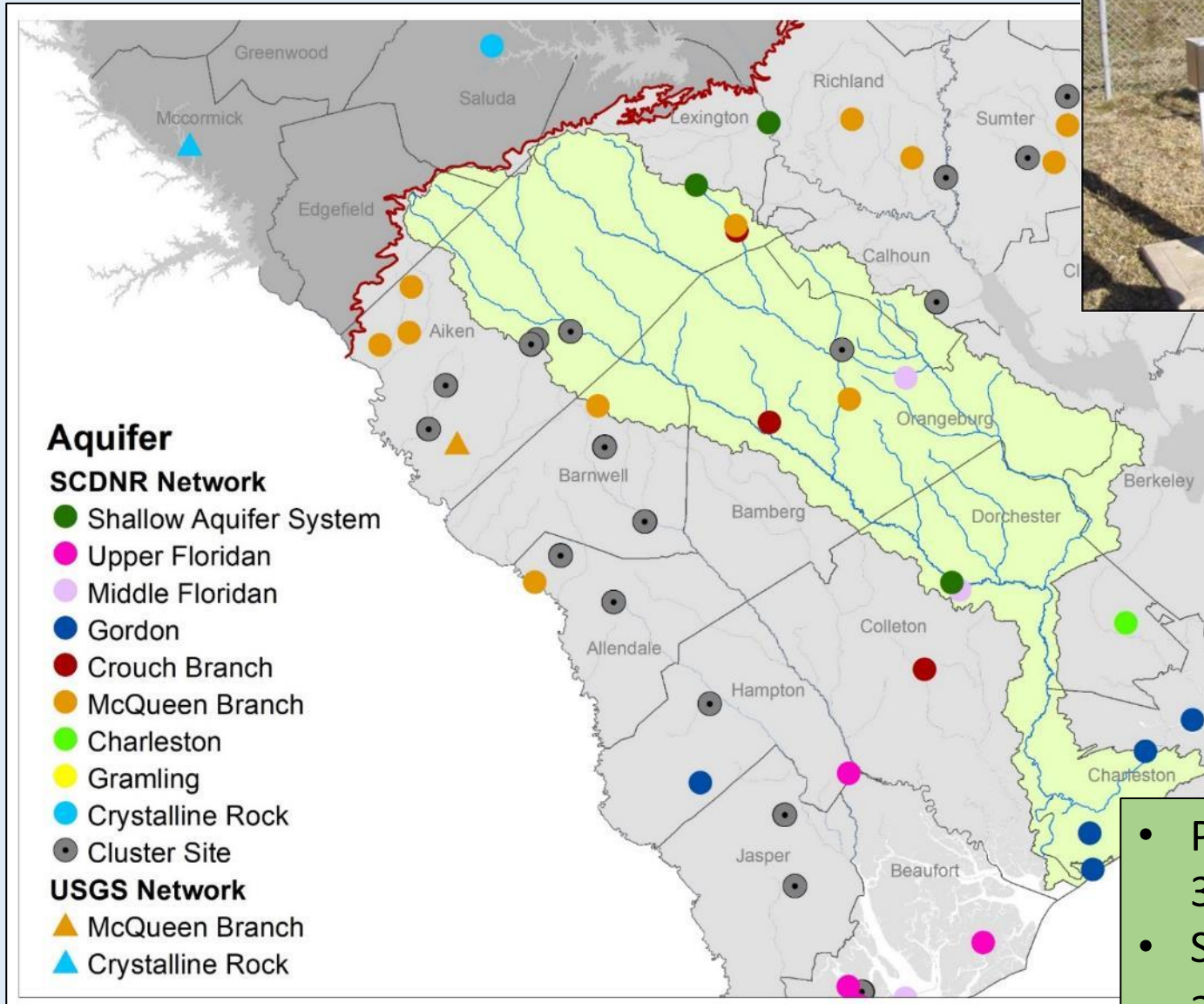
# Crouch Branch



# McQueen Branch



# Groundwater Monitoring



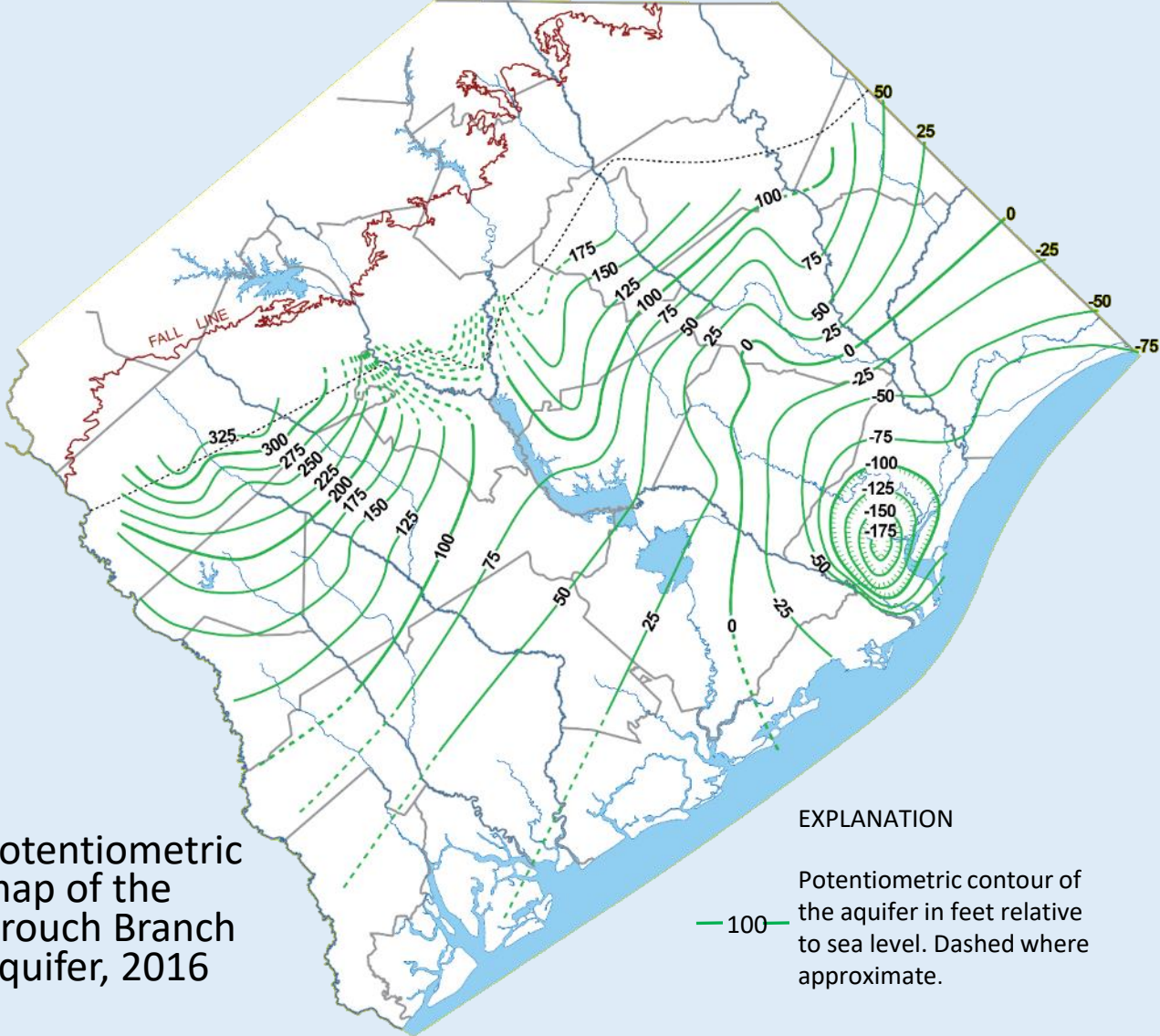
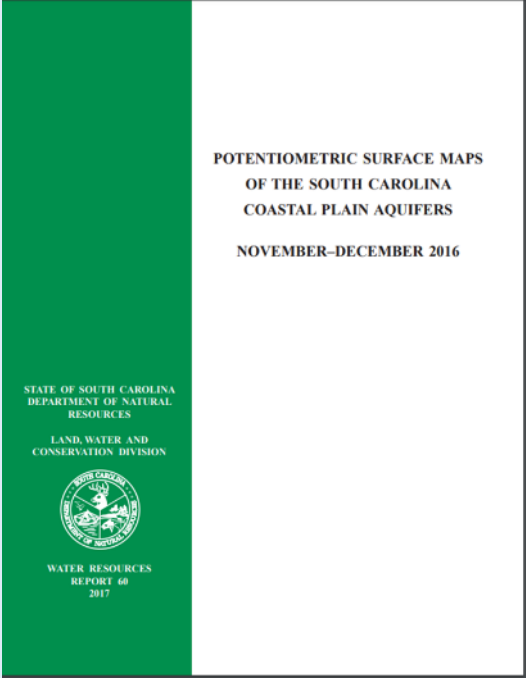
- Period of Record: 1 to 30+ years.
- SCDNR Data Reports available.



# Potentiometric Mapping



Maps showing groundwater elevations of the major aquifers.



Potentiometric map of the Crouch Branch aquifer, 2016

### EXPLANATION

— 100 — Potentiometric contour of the aquifer in feet relative to sea level. Dashed where approximate.

# Model Inputs

