



Broad Basin Agricultural and Socioeconomic Characteristics

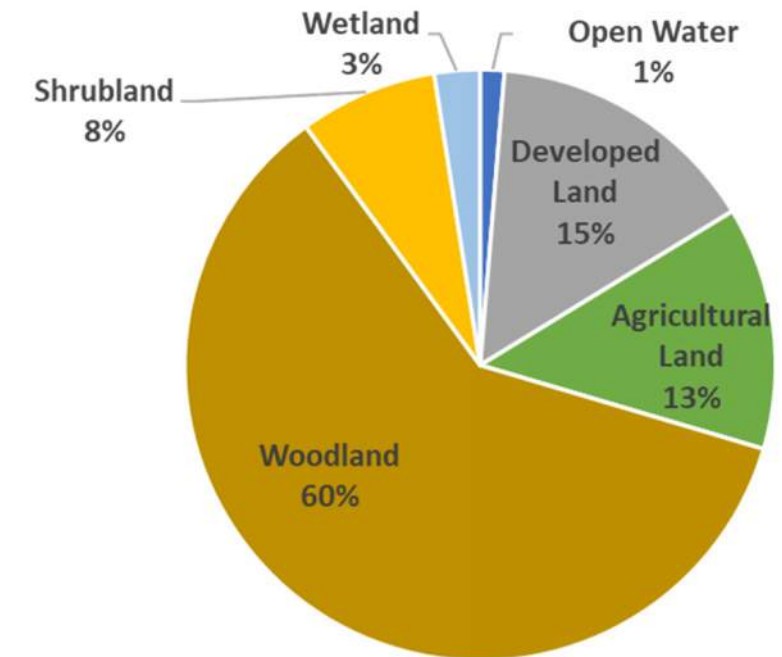
Chapter 2 of the River Basin Plan Covers...

- Physical Environment
- Climate
- Natural Resources
- Agricultural Resources
- Socioeconomic Environment

All tables and graphs on the following slides are preliminary and subject to review and revision.

Broad River Basin Land Cover

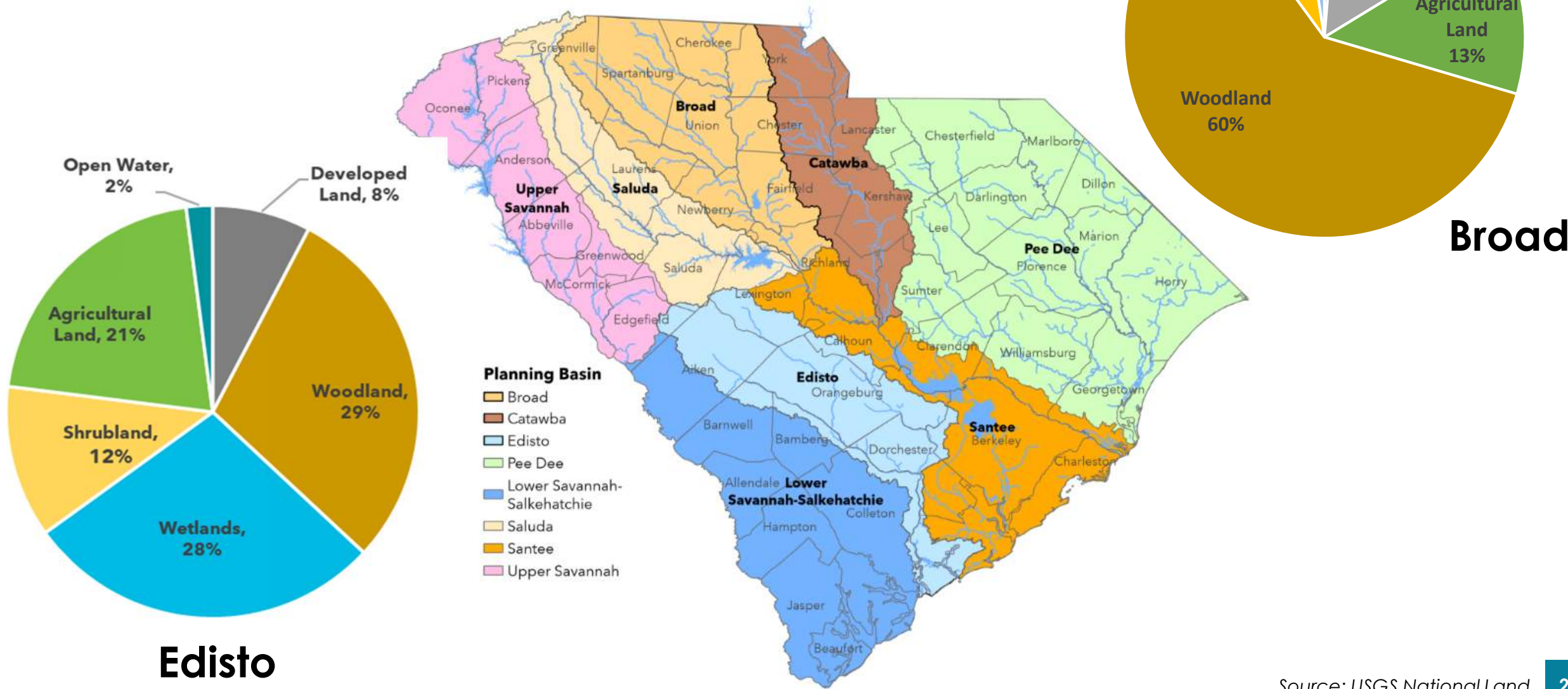
NLCD Land Cover Class	2001 Area (sq. miles)	2019 Area (sq. miles)	Change from 2001 to 2019 (sq. miles)	Percentage of Total Land (2019)
Open Water	49.4	49.9	0.54	1%
Developed, Open Space	269.3	288.7	19.40	7%
Developed, Low Intensity	153.2	174.6	21.39	4%
Developed, Medium Intensity	50.7	74.0	23.28	1%
Developed, High Intensity	22.2	30.4	8.26	1%
Barren Land	7.8	5.5	-2.30	0.2%
Deciduous Forest	867.2	761.4	-105.80	23%
Evergreen Forest	965.4	1,038.3	72.90	25%
Mixed Forest	460.7	490.7	30.02	12%
Shrub/Scrub	82.1	172.9	90.75	2%
Herbaceous	202.8	113.7	-89.12	5%
Hay/Pasture	561.4	488.4	-72.98	15%
Cultivated Crops	7.1	10.4	3.24	0.2%
Woody Wetlands	91.2	90.9	-0.33	2%
Emergent Herbac. Wetlands	3.6	4.1	0.49	0.1%
Total Land Area	3,794	3,794	0.00	100%



Increase from 2001 to 2019

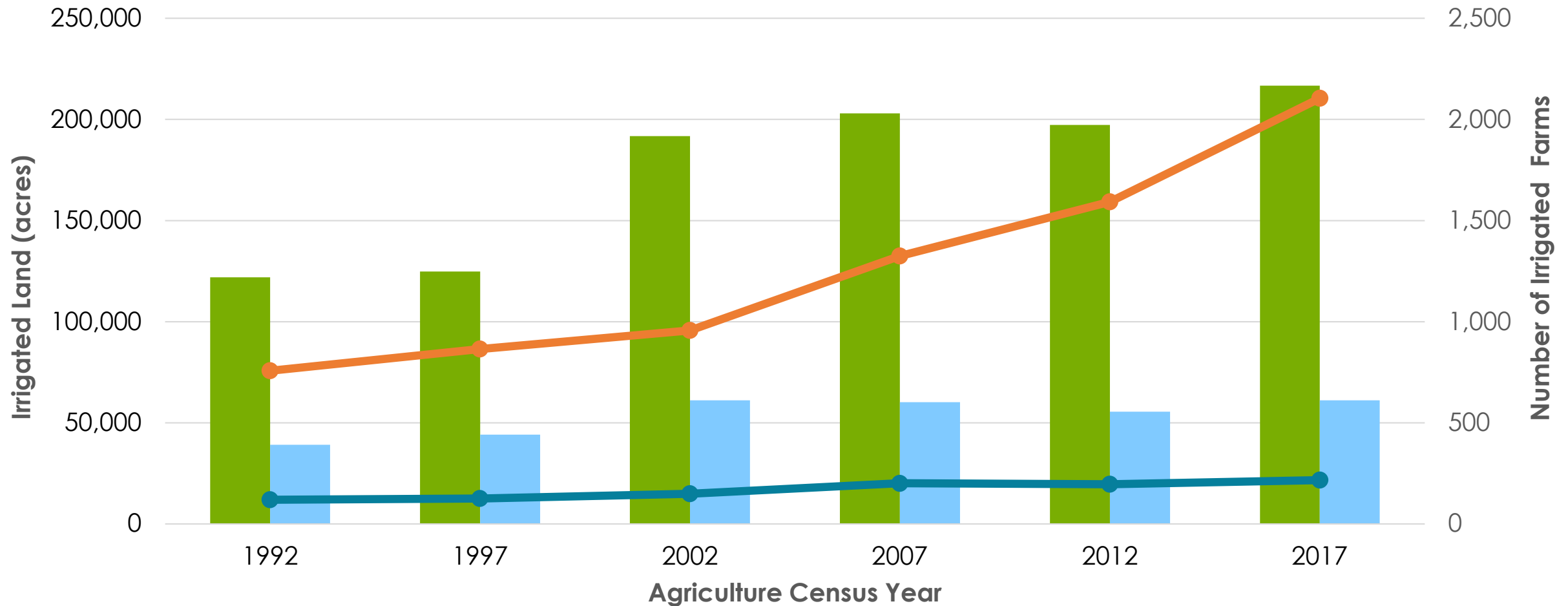
Decrease from 2001 to 2019

Comparison of Land Cover Broad and Edisto River Basins



Source: USGS National Land Cover Database

Number of Farms with Irrigation and Irrigated Acres in Counties in the Broad River Basin*, 1992-2017



■ Statewide Number Farms with Irrigation
 ■ Broad Number Farms with Irrigation
 —●— Statewide Irrigated Acres
 —●— Broad Irrigated Acres

* Totals include portions of the counties that are outside the Broad River basin

Source: USDA NASS Census of Agriculture 1992, 2002, 2012, and 2017

Summary of 2017 Census of Agriculture Data for Counties in the Broad River Basin

	Total all Counties	Cherokee	Chester	Fairfield	Greenville	Laurens	Newberry	Richland	Spartanburg	Union	York
Total Farm Operation (acres)	819,042	61,355	95,955	73,082	59,382	122,322	94,810	52,401	95,806	43,765	120,164
Total Cropland (acres)	247,900	20,866	25,029	10,767	17,035	40,898	31,591	22,226	34,338	7,268	37,882
Total Harvested Cropland (acres)	183,450	16,546	17,345	5,363	12,220	31,612	24,476	17,323	26,045	4,586	27,934
Total Irrigated Land (acres)	22,290*	(D)	238	222	1,510	410	1,181	1,611	1,830	40	1,160
Total Hay and Haylage Harvested (acres)	119,409	10,618	10,797	4,328	9,375	28,840	13,111	3,571	16,731	3,747	18,291
Total Soybeans Harvested (acres)	19,530*	3,781	(D)	-	471	(D)	3,089	2,843	3,454	(D)	618
Total Corn (Grain) Harvested (acres)	18,150	396	622	230	334	91	1,227	6,692	452	(D)	185
Total Cotton Harvested (acres)	18,099*	-	4,584	-	-	-	(D)	1,976	-	-	5,818
Total Vegetables Harvested (acres)	10,286*	(D)	293	227	187	143	54	121	395	(D)	259
Total Wheat Harvested (acres)	10,241	2,295	444	240	155	602	1,774	1,581	1,375	-	1,775
Total Corn (Silage) Harvest (acres)	4,148*	(D)	(D)	-	-	1,079	2,869	(D)	200	-	-
Total Orchards Harvested (acres)	3,963	59	160	5	531	128	95	79	2,516	241	149
Total Peanut Harvested (acres)	1,290	-	-	-	-	-	-	(D)	3	-	-
Total Oats Harvested (acres)	845*	(D)	(D)	12	(D)	50	218	67	265	-	(D)

* Indicates some counties left out of total due to not reporting

D = not disclosed/reported

Source: USDA NASS Census of Agriculture 2017

Totals include portions of the counties that are outside the Broad River basin. Lexington County totals not included, as only a small portion is in the basin.

Summary of 2017 Census of Agriculture Data for Counties in the Broad River Basin

	Total all Counties	Cherokee	Chester	Fairfield	Greenville	Laurens	Newberry	Richland	Spartanburg	Union	York
Total Cattle Operations (#)	2,529	179	213	81	323	378	293	67	460	132	403
Total Cows/Beef Operations (#)	2,299	163	206	73	302	350	249	49	406	127	374
Total Cows/Milk Operations (#)	76	4	12	1	9	9	9	-	20	4	8
Total Hogs Operations (#)	258	21	6	7	50	17	26	21	67	9	34
Total Sheep Operations (#)	228	22	22	7	37	44	25	11	24	4	32
Total Chicken Layers (egg) Operations (#)	1,088	49	68	19	188	151	111	81	250	30	141
Total Chicken Broilers (meat) Operations (#)	88	4	6	1	15	16	14	8	14	2	8

Source: USDA NASS Census of Agriculture 2017

Summary of 2017 Census of Agriculture Data for Counties in the Broad River Basin

	Total all Counties	Cherokee	Chester	Fairfield	Greenville	Laurens	Newberry	Richland	Spartanburg	Union	York
Total Commodity Sales (\$ million)	482	33	31	17	13	71	143	32	31	10	101
Total Crop Sales (\$ million)	143	9	7	2	10	9	6	14	21	1	63
Total Animal Sales (\$ million)	339	24	24	15	3	62	137	18	9	9	37

Source: USDA NASS Census of Agriculture 2017

Value of Timber in Counties in the Broad River Basin* and State Totals

	Broad Basin Counties Total	State Total
Acres of Forestland	2,828,246	12,849,182
Percent Forest	70%	66%
Harvested Timber Value (Million \$) – Stumpage	\$60	\$446
Harvested Timber Value (Million \$)– Delivered	\$137	\$881

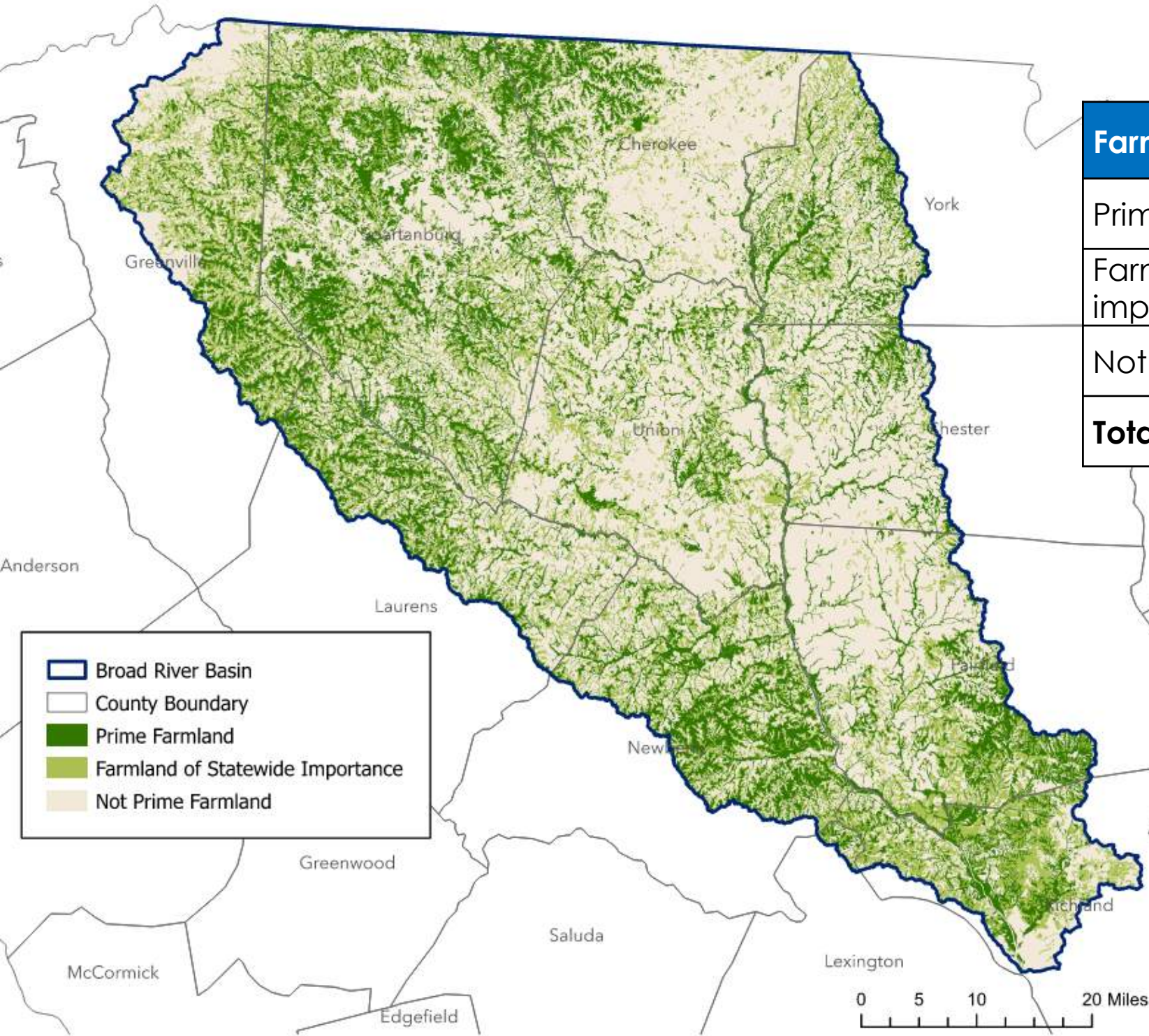


* Totals include portions of the counties that are outside the Broad River basin

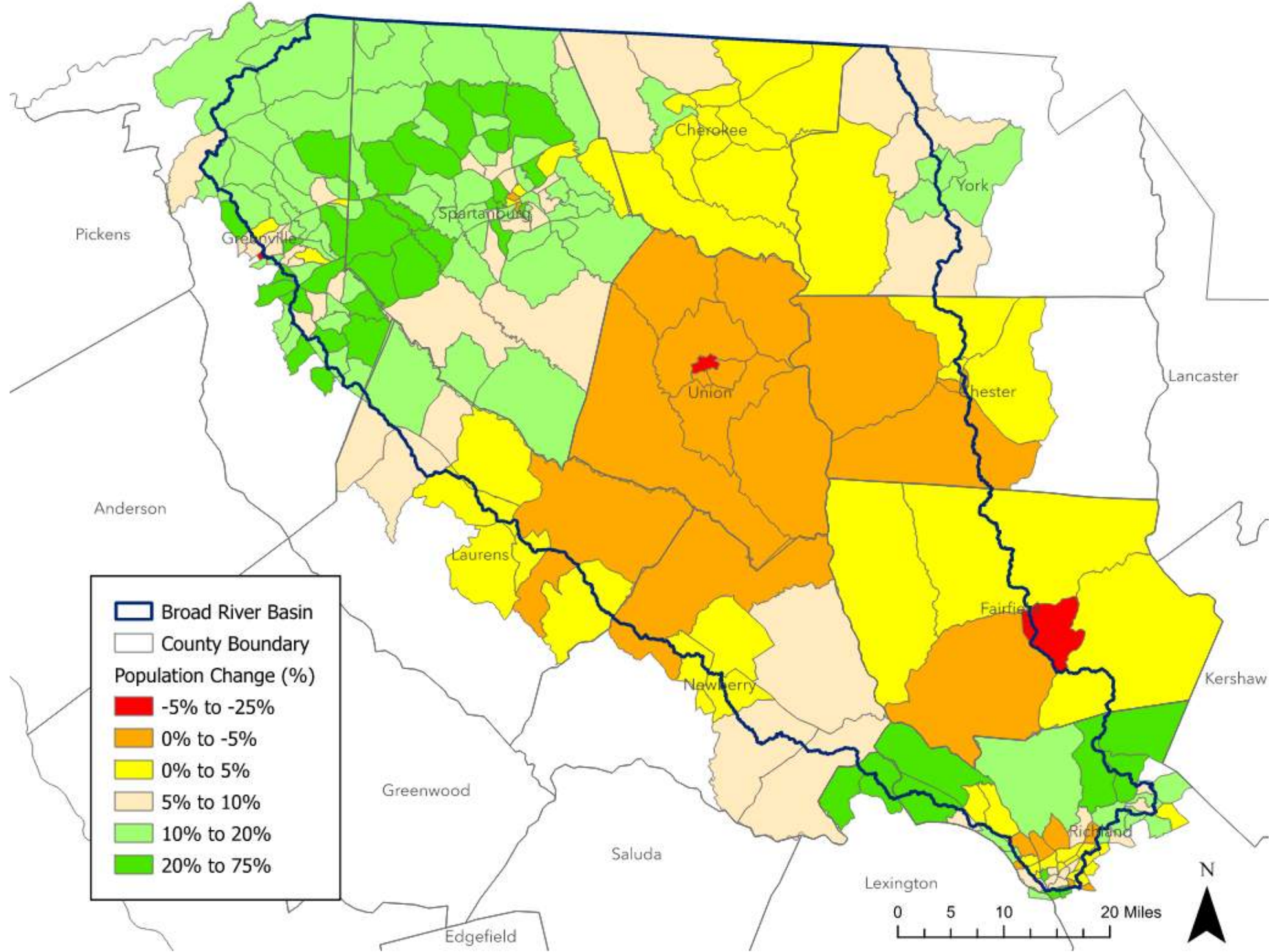
Prime Farmland

Farmland Type	Square Miles	Percent of Basin
Prime farmland	915	24%
Farmland of statewide importance	743	19.5%
Not prime farmland	2,154	56.5%
Total	3,812	100%

Prime farmland is defined as the land with the best combinations of physical and chemical characteristics for producing food, feed, forage, fiber, and oilseed crops and is available for these uses. It has an adequate and dependable supply of moisture from precipitation or irrigation; a favorable temperature and growing season; a water supply that is dependable and of adequate quality; is not excessively erodible or saturated with water for long periods; and has slopes mainly ranging from 0 to 6 percent. **Farmland of statewide importance** is land that nearly meets the requirements of prime farmland and that can economically produce high-yield crops when treated and managed with acceptable farming methods.

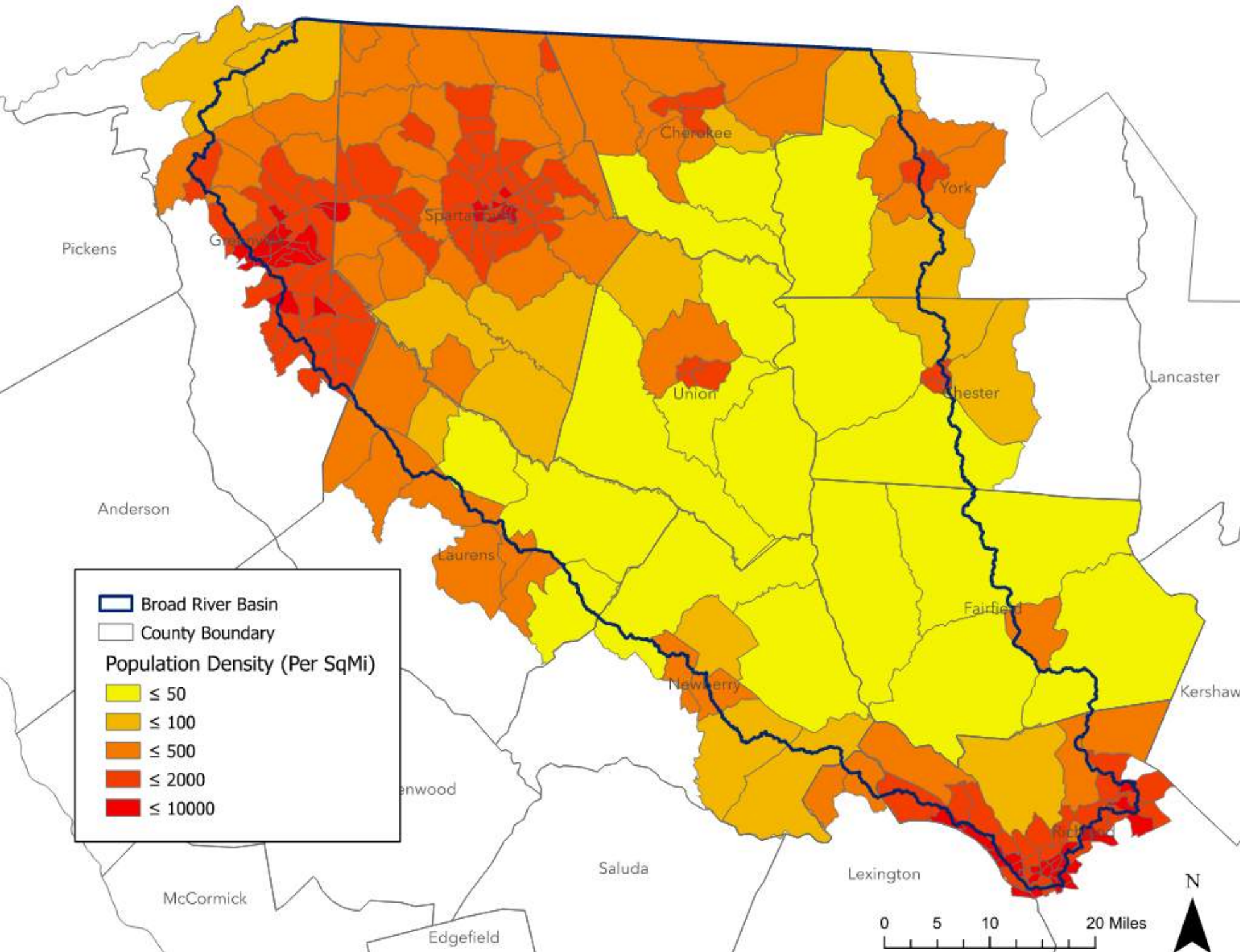


Population Change, 2010-2020



Source: 2010 and 2020 US Census

Population Density, 2020



Source: 2020 US Census