

Land Use, Population Growth, and Other Characteristics of the LSS River Basins



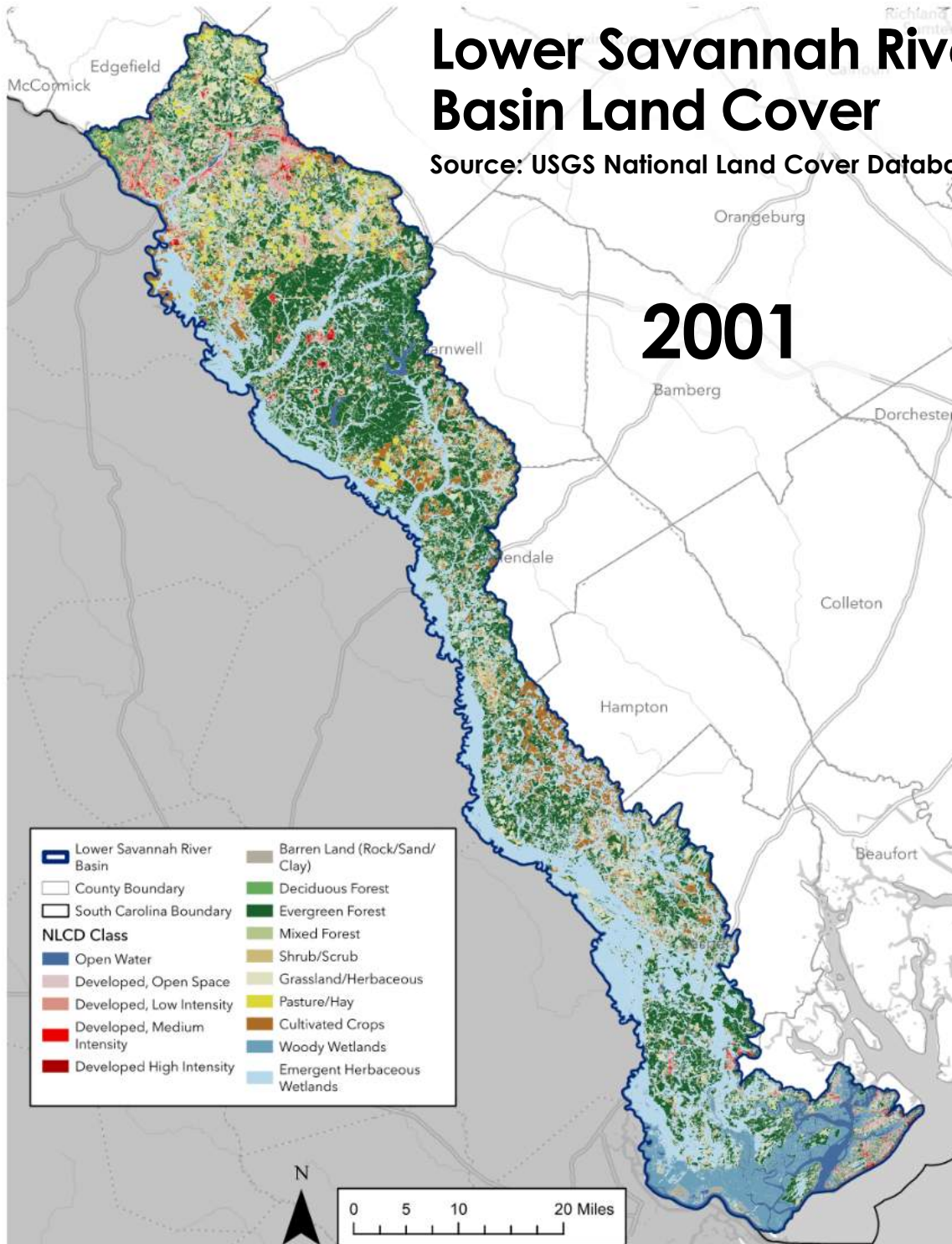
Chapter 2 of the River Basin Plan Covers...

- Physical Environment
- Climate
- Natural Resources
- Agricultural Resources
- Socioeconomic Environment

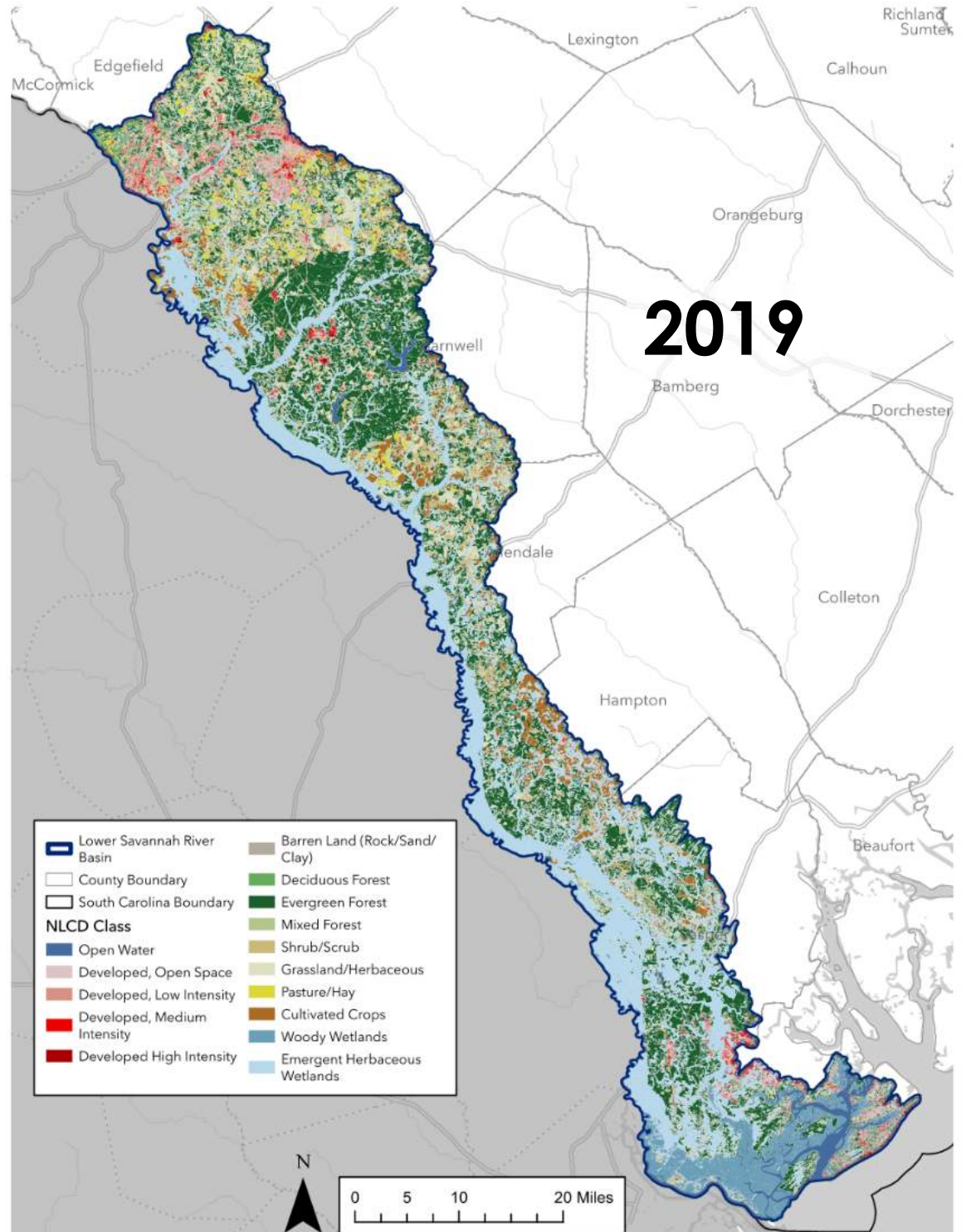
Lower Savannah River Basin Land Cover

Source: USGS National Land Cover Database

2001



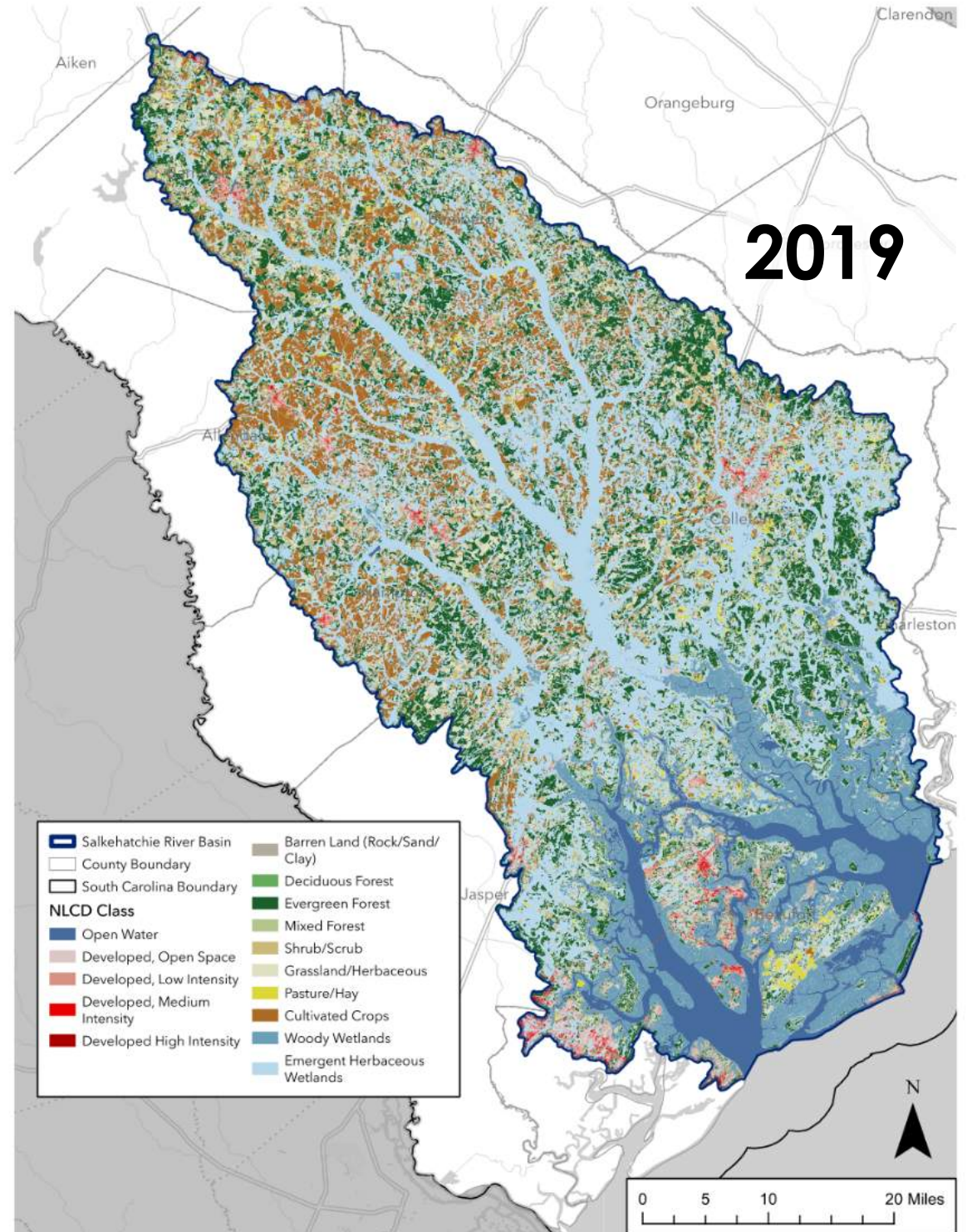
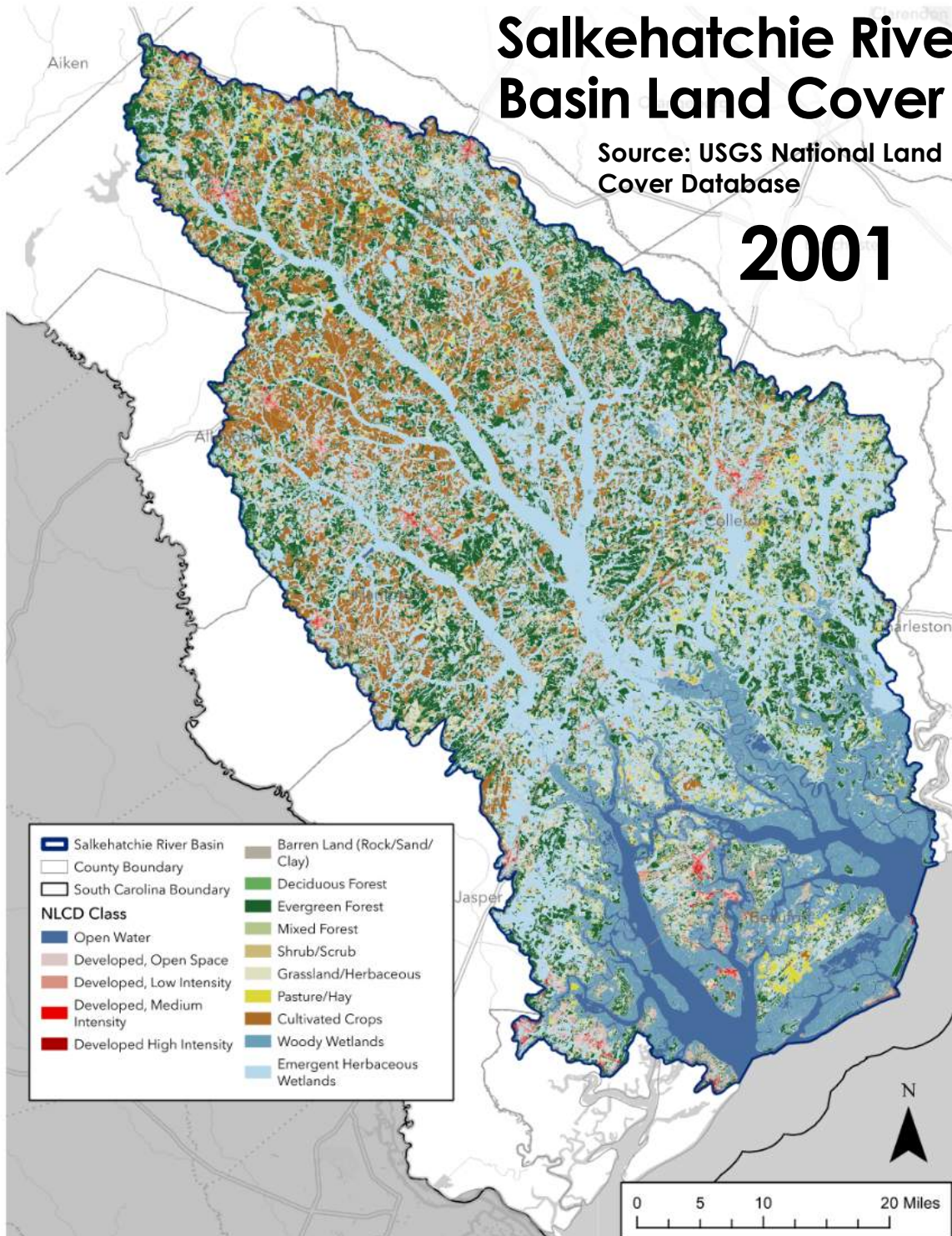
2019



Salkehatchie River Basin Land Cover

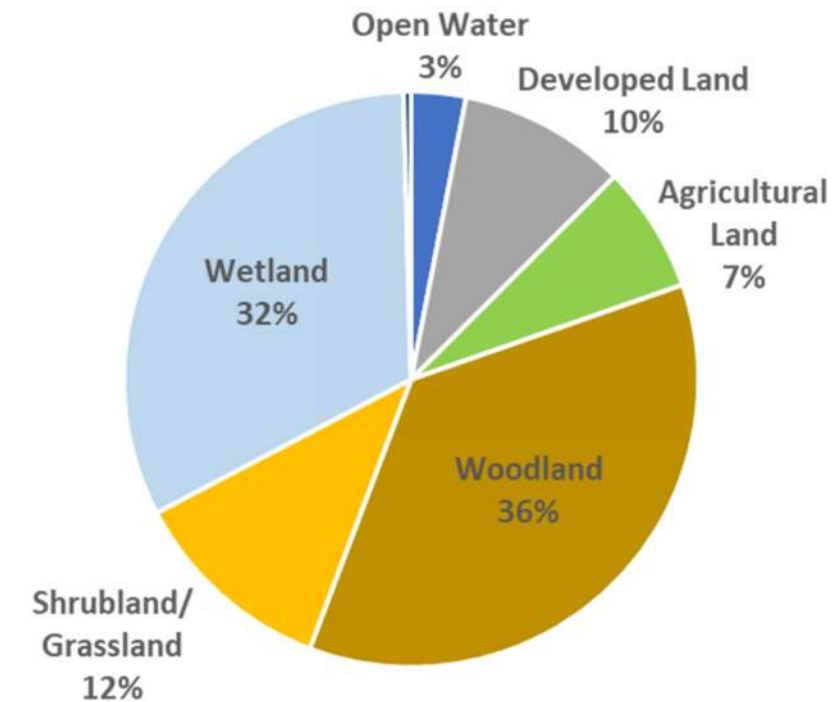
Source: USGS National Land Cover Database

2001



Lower Savannah River Basin Land Cover

NLCD Land Cover Class	2001 Area (sq. mi.)	2019 Area (sq. mi.)	Change from 2001 to 2019 sq. mi.)	% of Total Land (2019)
Open Water	56.8	54.0	-2.8	3.1%
Developed, Open Space	78.8	84.0	5.3	4.8%
Developed, Low Intensity	45.4	54.3	8.9	3.1%
Developed, Medium Intensity	13.0	21.9	9.0	1.2%
Developed High Intensity	4.2	6.1	1.8	0.3%
Barren Land (Rock/Sand/Clay)	8.7	7.5	-1.1	0.4%
Deciduous Forest	53.2	50.7	-2.5	2.9%
Evergreen Forest	590.7	564.7	-26.1	32.1%
Mixed Forest	23.1	18.9	-4.2	1.1%
Shrub/Scrub	92.6	108.2	15.6	6.2%
Grassland/Herbaceous	94.0	95.4	1.4	5.4%
Pasture/Hay	47.4	43.4	-4.0	2.5%
Cultivated Crops	84.7	82.1	-2.6	4.7%
Woody Wetlands	473.9	469.9	-4.0	26.7%
Emergent Herbaceous Wetlands	91.7	96.9	5.2	5.5%
Total Land Area	1758.2	1758.2	0.0	100.0%



2019 Land Cover by Major Land Type

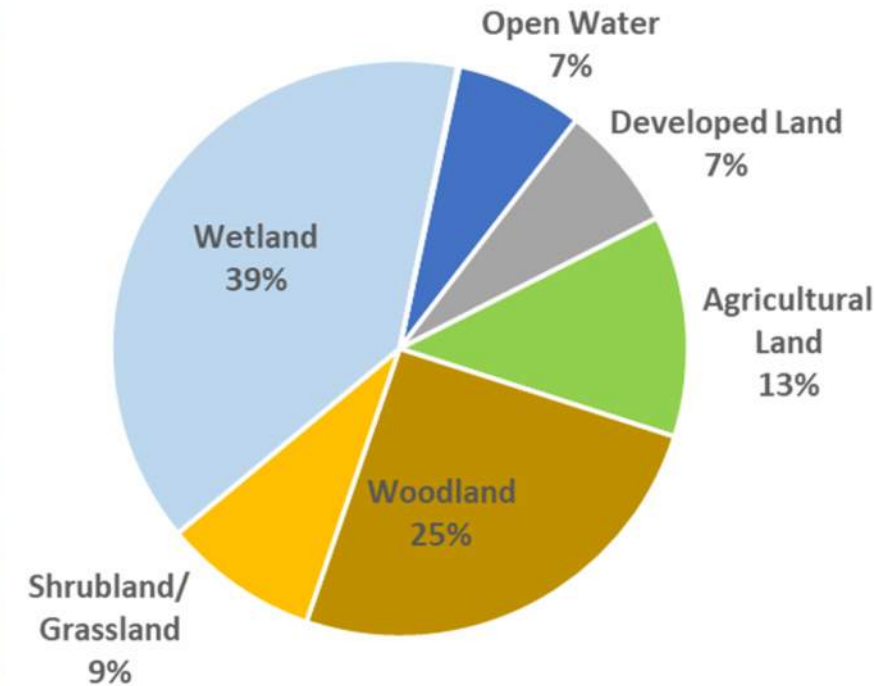
Increase from 2001 to 2019

Decrease from 2001 to 2019

Source: USGS National Land Cover Database

Salkehatchie River Basin Land Cover

NLCD Land Cover Class	2001 Area (sq. mi.)	2019 Area (sq. mi.)	Change from 2001 to 2019 sq. mi.)	% of Total Land (2019)
Open Water	209.3	204.3	-5.0	7.1%
Developed, Open Space	120.8	123.3	2.5	4.3%
Developed, Low Intensity	51.0	55.9	4.9	2.0%
Developed, Medium Intensity	11.4	17.9	6.5	0.6%
Developed High Intensity	2.9	4.2	1.3	0.1%
Barren Land (Rock/Sand/Clay)	2.9	2.7	-0.3	0.1%
Deciduous Forest	47.2	36.6	-10.7	1.3%
Evergreen Forest	696.3	661.6	-34.7	23.2%
Mixed Forest	26.3	25.2	-1.1	0.9%
Shrub/Scrub	119.6	129.9	10.4	4.5%
Grassland/Herbaceous	72.8	119.2	46.4	4.2%
Pasture/Hay	59.2	47.7	-11.5	1.7%
Cultivated Crops	318.5	306.6	-11.8	10.7%
Woody Wetlands	849.0	822.2	-26.8	28.8%
Emergent Herbaceous Wetlands	270.4	300.3	29.9	10.5%
Total Land Area	2857.6	2857.6	0.0	100.0%



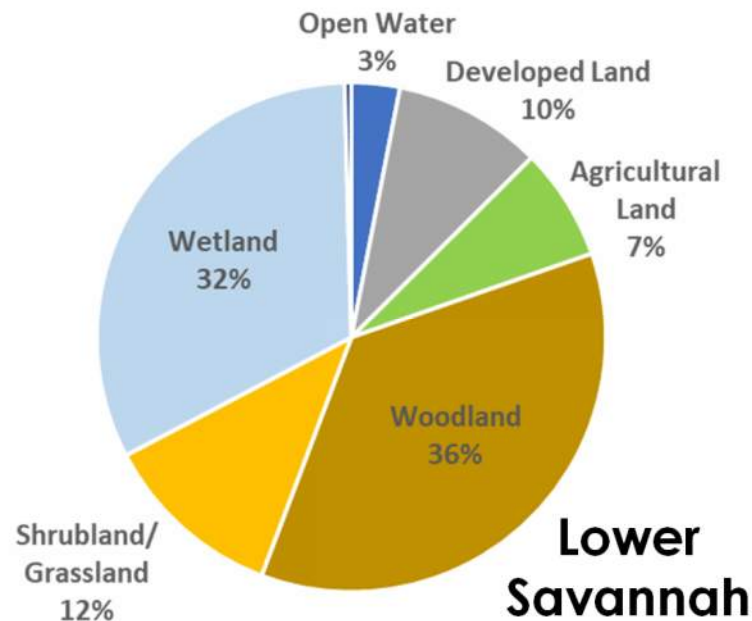
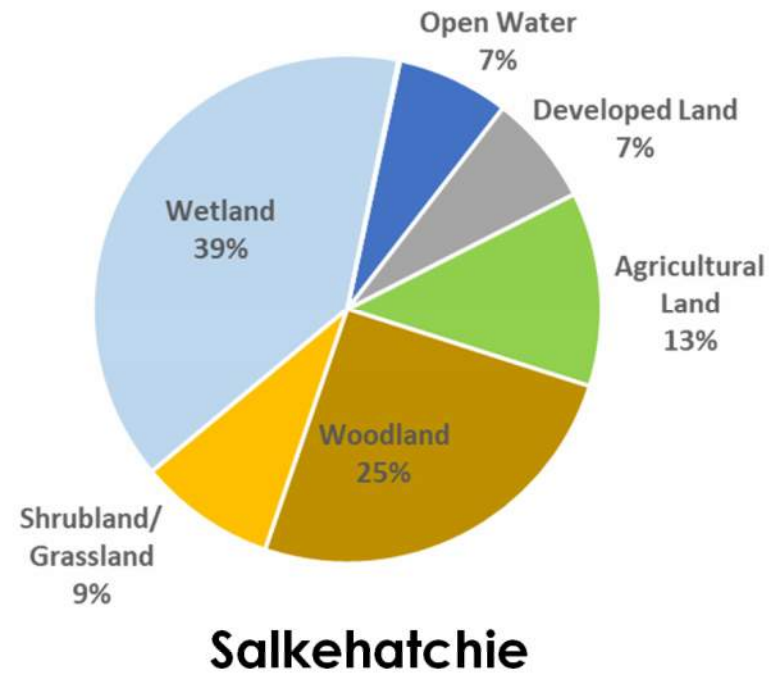
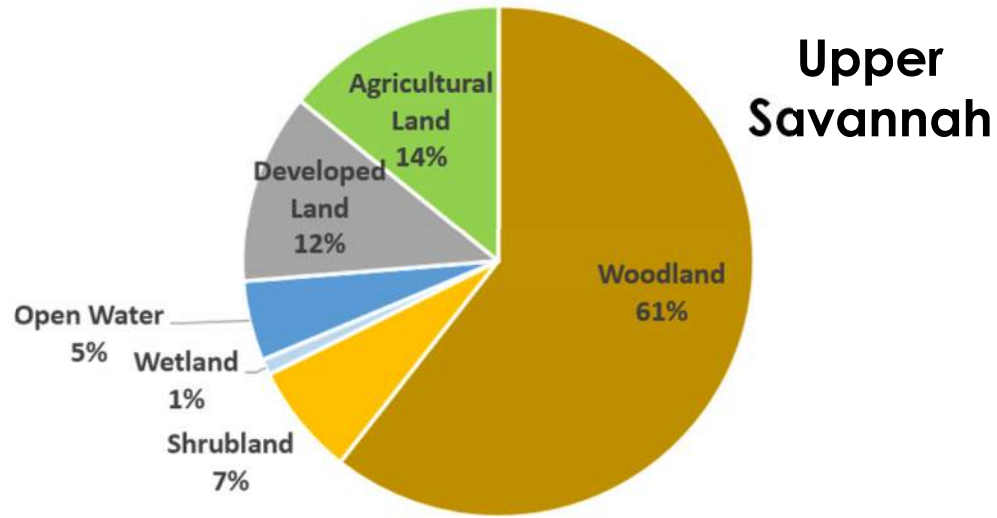
2019 Land Cover by Major Land Type

Increase from 2001 to 2019

Decrease from 2001 to 2019

Source: USGS National Land Cover Database

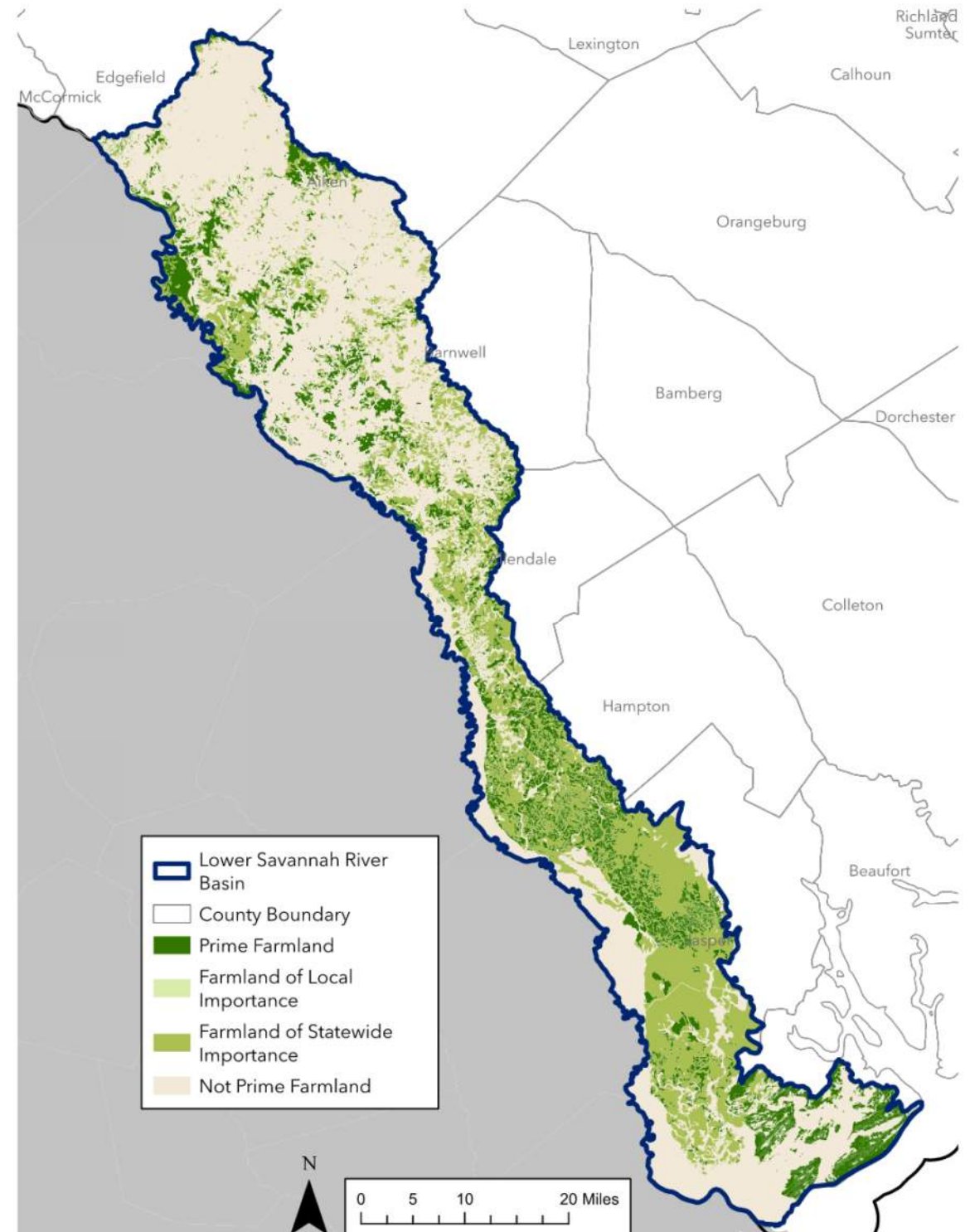
Comparison of 2019 Land Cover Upper Savannah, Lower Savannah, and Salkehatchie River Basins



Prime Farmland Lower Savannah

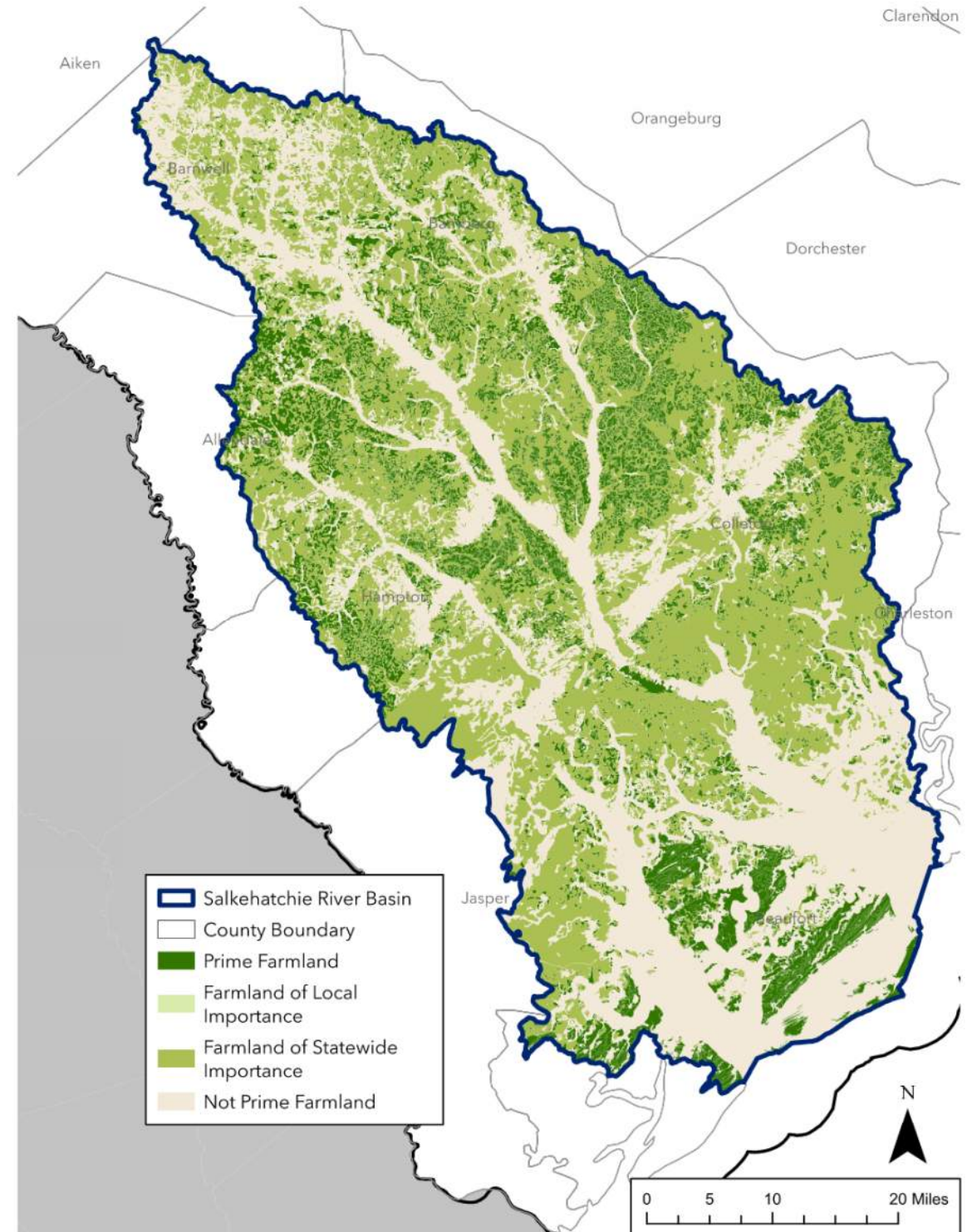
Farmland Type	Area (sq. miles)	Area (% Basin)
Prime Farmland	325	18.5%
Farmland of Statewide Importance	503	28.6%
Not Prime Farmland or Farmland of Statewide Importance	930	52.9%
Total Area	1,758	100.0%

Prime farmland is defined by the USDA as the land with the best combinations of physical and chemical characteristics for producing food, feed, forage, fiber, and oilseed crops and is available for these uses. It has an adequate and dependable supply of moisture from precipitation or irrigation, a favorable temperature and growing season, and a water supply that is dependable and of adequate quality. It also is not excessively erodible or saturated with water for long periods and has slopes mainly ranging from 0 to 6 percent. **Farmland of statewide importance** is land that nearly meets the requirements of prime farmland and that can economically produce high-yield crops when treated and managed with acceptable farming methods.



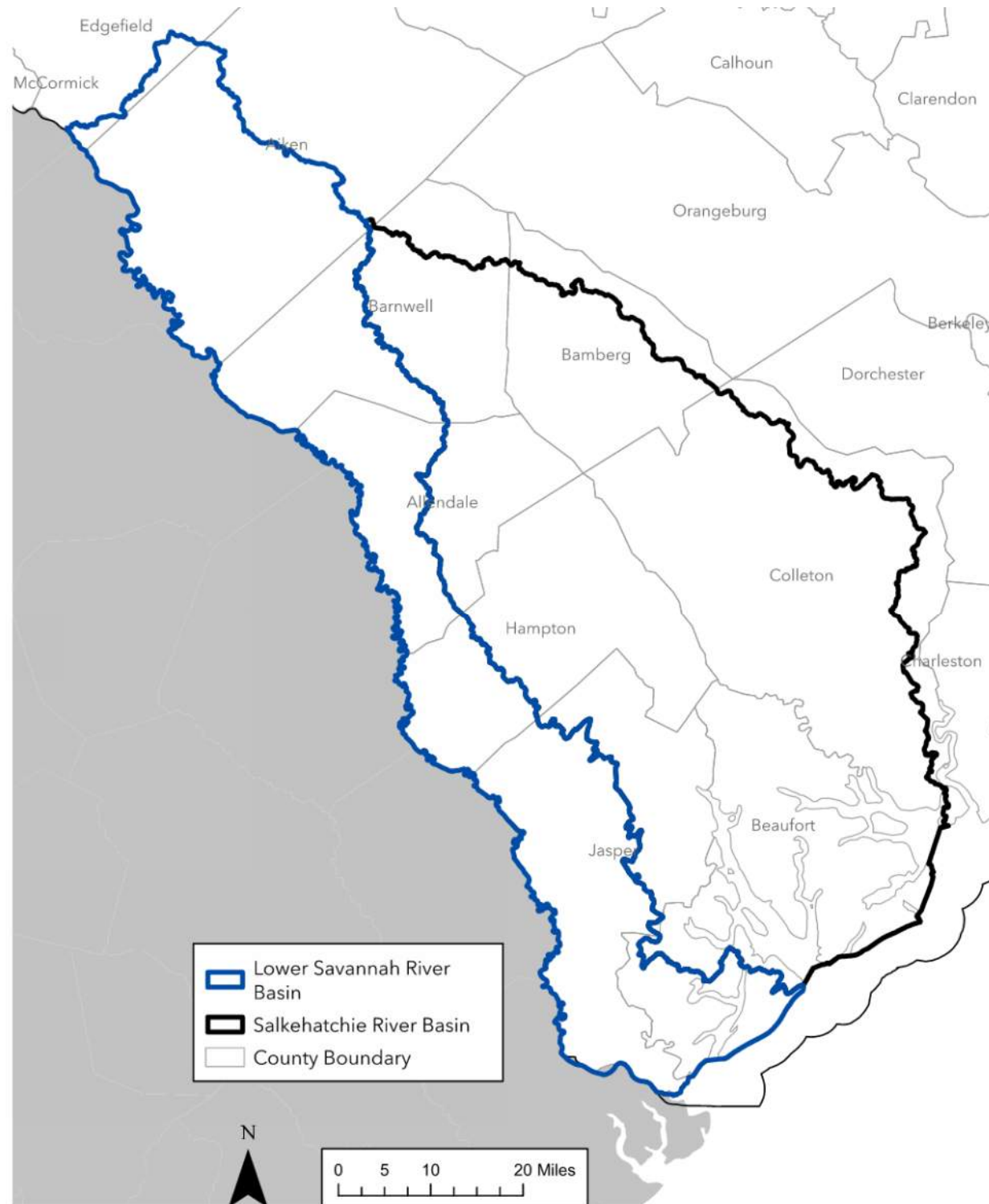
Prime Farmland Salkehatchie

Farmland Type	Area (sq. miles)	Area (% Basin)
Prime Farmland	551	19.3%
Farmland of Statewide Importance	1,295	45.3%
Not Prime Farmland or Farmland of Statewide Importance	1,012	35.4%
Total Area	2,858	100.0%

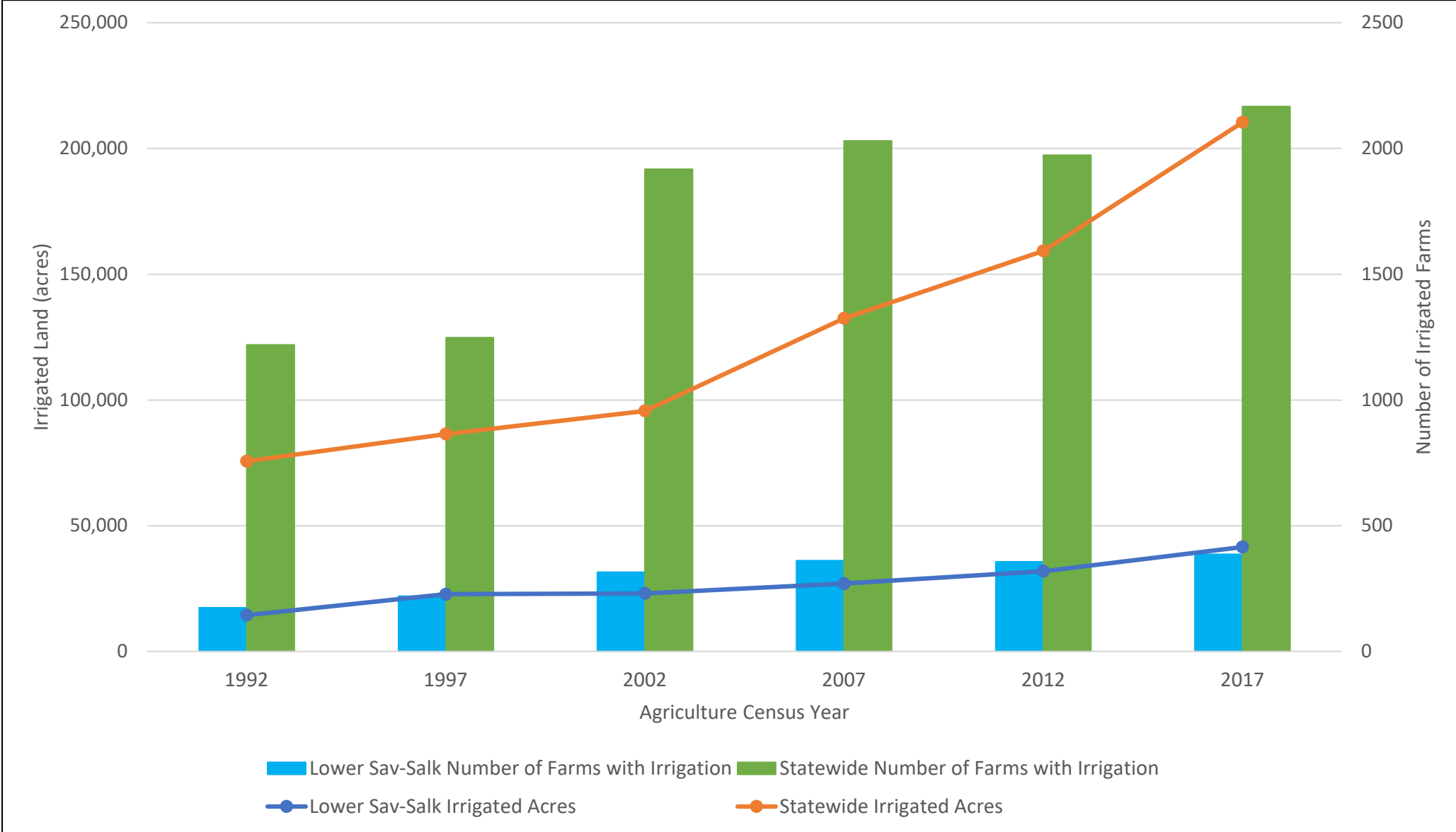


Lower Savannah-Salkehatchie River Basin Counties

- Aiken
- Allendale
- Bamberg
- Barnwell
- Beaufort
- Colleton
- Edgefield (minor)
- Hampton
- Jasper



Number of Farms with Irrigation and Irrigated Acres in Counties in the Lower Savannah-Salkehatchie River Basin*, 1992-2017



* Totals include portions of the counties that are outside the Lower Savannah-Salkehatchie River basin

Source: USDA NASS Census of Agriculture 1992, 2002, 2012, and 2017

Summary of 2017 Census of Agriculture Data for Counties in the Lower Savannah-Salkehatchie River Basin*

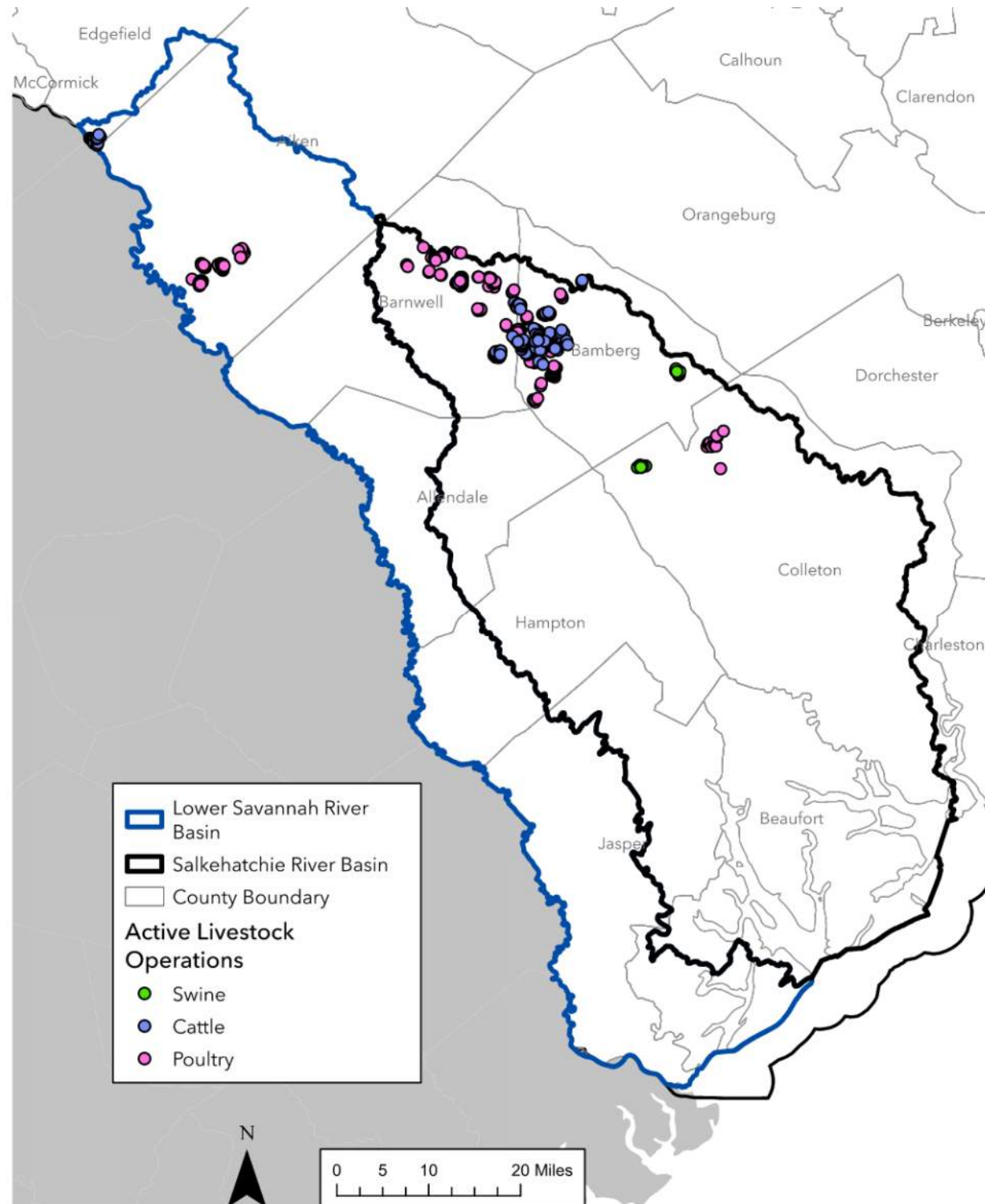
All Values in Acres	Total Basin Counties	Aiken	Allendale	Bamberg	Barnwell	Beaufort	Colleton	Hampton	Jasper
Total Farm Operation	819,948	162,628	86,555	102,591	74,338	55,955	168,095	106,640	63,146
Total Cropland	287,002	62,880	35,299	53,499	33,271	7,101	40,731	42,283	11,938
Total Harvested Cropland	192,454	38,550	25,815	36,378	24,955	3,990	24,461	33,601	4,704
Total Irrigated Land	41,553	8,476	5,888	9,373	4,894	2,007	2,385	8,530	(D)
Total Hay and Haylage Harvested	35,757	18,242	4,102	3,710	3,856	694	3,871	571	711
Total Soybeans Harvested	27,564	3,122	7,481	8,104	1,425	440	3,413	3,579	-
Total Corn (Grain) Harvested	35,476	6,322	7,807	6,046	2,430	863	5,602	5,991	415
Total Cotton Harvested	45,541	3,887	1,666	8,539	11,291	-	4,304	15,854	(D)
Total Vegetables Harvested	8,082	2,285	331	1,874	706	1,588	662	600	36
Total Wheat Harvested	3,019	606	1,150	244	394	(D)	147	355	123
Total Corn (Silage) Harvested	1,102	(D)	-	1,042	(D)	-	60	(D)	-
Total Orchards Harvested	2,639	1,462	682	194	76	45	20	160	(D)
Total Peanuts Harvested	-	1,143	2,503	4,898	4,600	(D)	4,630	6,457	(D)
Total Oats Harvested	2,130	461	-	460	(D)	(D)	1,119	(D)	90

D = not disclosed/reported

* Totals include portions of the counties that are outside the Lower Savannah-Salkehatchie River basin

Source: USDA NASS Census of Agriculture 2017

Livestock Operations



Summary of 2017 Census of Agriculture Data for Counties in the Lower Savannah-Salkehatchie River Basin*

	Total Basin Counties	Aiken	Allendale	Bamberg	Barnwell	Beaufort	Colleton	Hampton	Jasper
Total Cattle Operations (#)	670	286	14	78	89	32	126	31	14
Total Cows/Beef Operations (#)	541	229	14	51	70	31	109	25	12
Total Cows/Milk Operations (#)	29	12	-	10	(D)	-	6	1	-
Total Hogs Operations (#)	873	784	(D)	13	15	10	38	12	1
Total Sheep Operations (#)	117	51	3	6	24	11	11	8	3
Total Chicken Layers (Egg) Operations (#)	418	175	7	23	58	46	64	21	24
Total Chicken Broilers (Meat) Operations (#)	65	47	-	5	8	3	1	-	1

* Totals include portions of the counties that are outside the Lower Savannah-Salkehatchie River basin

Summary of 2017 Census of Agriculture Data for Counties in the Lower Savannah-Salkehatchie River Basin*

Values in Million \$	Total Basin Counties	Aiken	Allendale	Bamberg	Barnwell	Beaufort	Colleton	Hampton	Jasper
Total Commodity Sales	309.4	137.4	15.3	36.9	35.3	20.3	20.3	30.5	13.4
Total Crop Sales	144.8	29.1	12.5	22.9	15.3	19.2	15.6	30.2	(D)
Total Animal Sales	151.2	108.2	2.8	14.0	20.1	1.1	4.7	0.3	(D)

D = not disclosed/reported

* Totals include portions of the counties that are outside the Lower Savannah-Salkehatchie River basin

Source: USDA NASS Census of Agriculture 2017



Value of Timber in Counties in the Lower Savannah-Salkehatchie River Basin* and State Totals

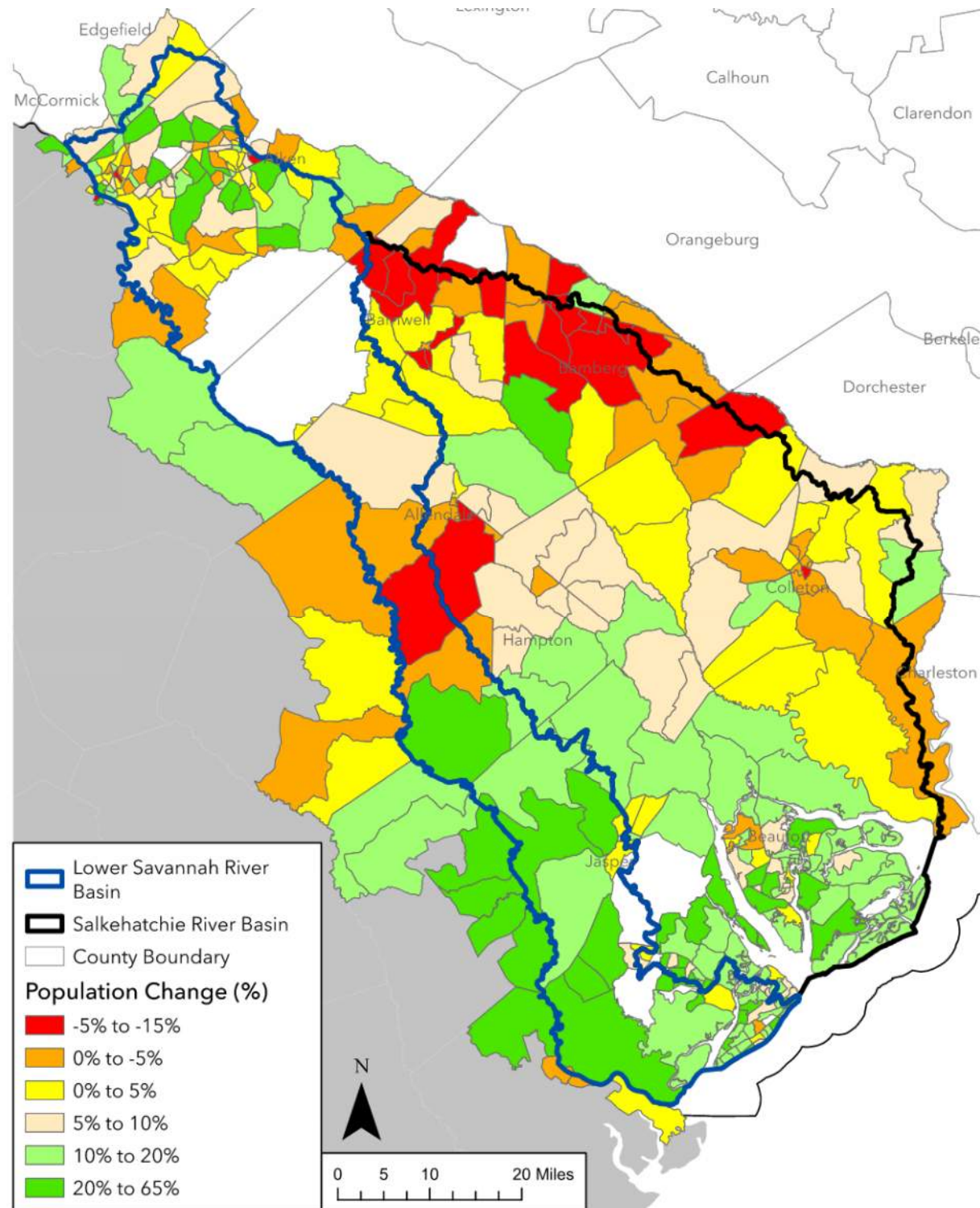
	Basin Counties Total	State Total
Acres of Forestland	2,283,382	12,849,182
Percent Forest	69%	66%
Harvested Timber Value (Million \$) - Stumpage	\$154.9	\$573.7
Harvested Timber Value (Million \$) - Delivered	\$289.4	\$1,162.3



* Totals include portions of the counties that are outside the Lower Savannah-Salkehatchie River basin

Source: SC Forestry Commission, "Value of SC's Timber Delivered to Mills" (2021)

Population Change, 2010-2020



Population Density, 2020

