



South Carolina Department of Health and Environmental Control

---

# Capacity Use Area Groundwater Management Plans

---

Bureau of Water

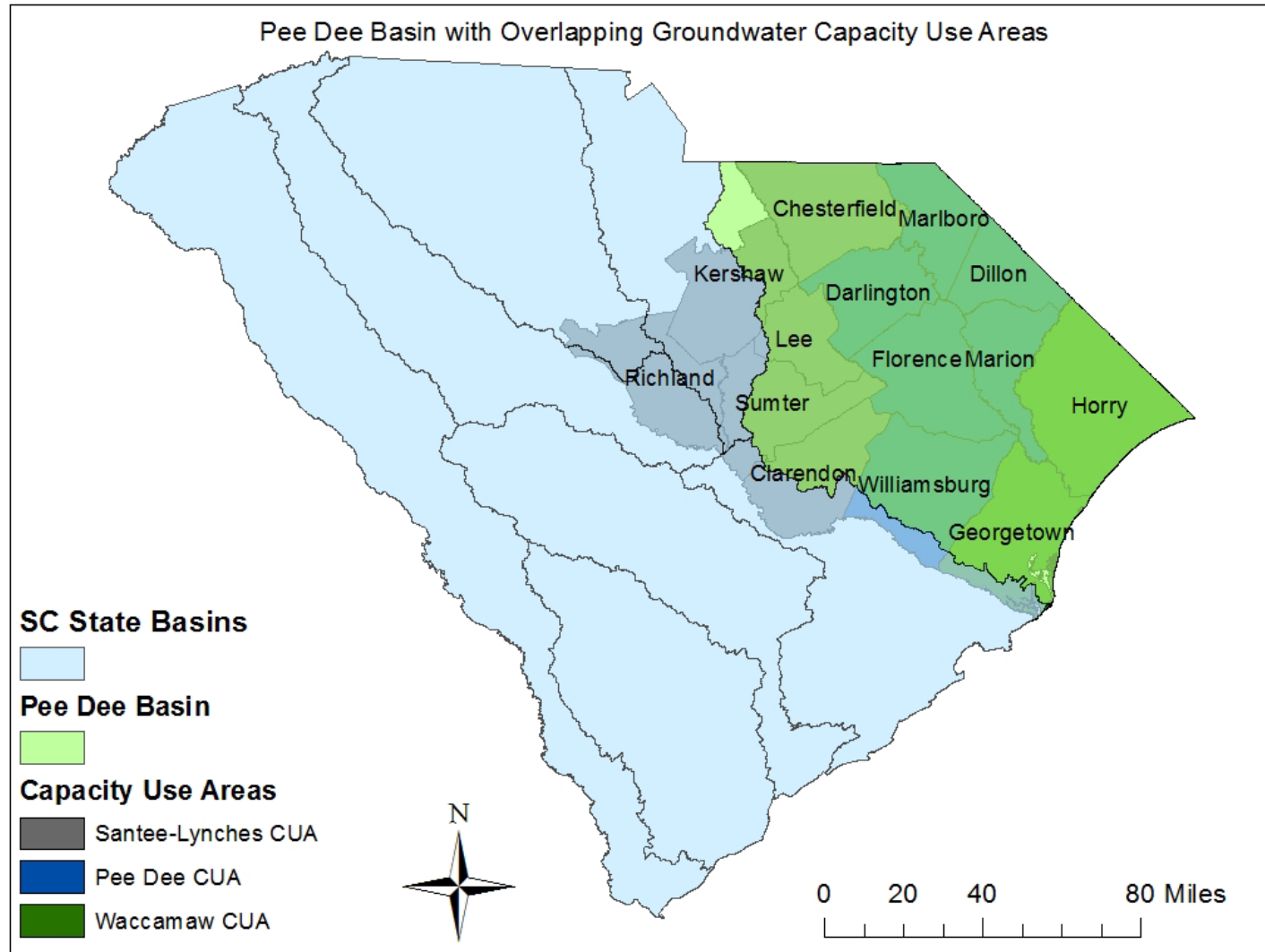
# Water Quantity Programs

- **Groundwater Use and Reporting**
  - Since the 1970s
  - Issue permits in designated capacity areas of the coastal plain over for use over **3 million gallons in any month** (~1in of water per week for 28 acres or average use for 1,000 people)
  - Users outside of Capacity Use Areas must register wells if well or well system will use over 3 million gallons in any month
  - All registered and permitted groundwater withdrawers report their annual water use to the Department
- **Surface Water Withdrawal, Permitting and Reporting**
  - Since June 2012
  - Issue permits / registrations statewide if over 3 million gallons in any month
  - All registered and permitted surface water withdrawers report their annual water use to the Department

## Capacity Use Areas

- **Waccamaw**: est. June 22, 1979, Horry and Georgetown Counties
- **Lowcountry**: est. July 24, 1981, Jasper, Beaufort, and Colleton Counties (Hampton county added June 10, 2008)
- **Trident**: est. August 8, 2002, Charleston, Berkeley, and Dorchester Counties
- **Pee Dee**: est. February 12, 2004, Marion, Marlboro, Darlington, Dillon, Florence, and Williamsburg Counties
- **Western**: est. November 8, 2018, Aiken, Bamberg, Barnwell, Calhoun, Allendale, Lexington, and Orangeburg Counties
- **Santee-Lynches**: est. July 15, 2021, Chesterfield, Clarendon, Kershaw, Lee, Richland, and Sumter Counties

# Pee Dee Basin CUAs



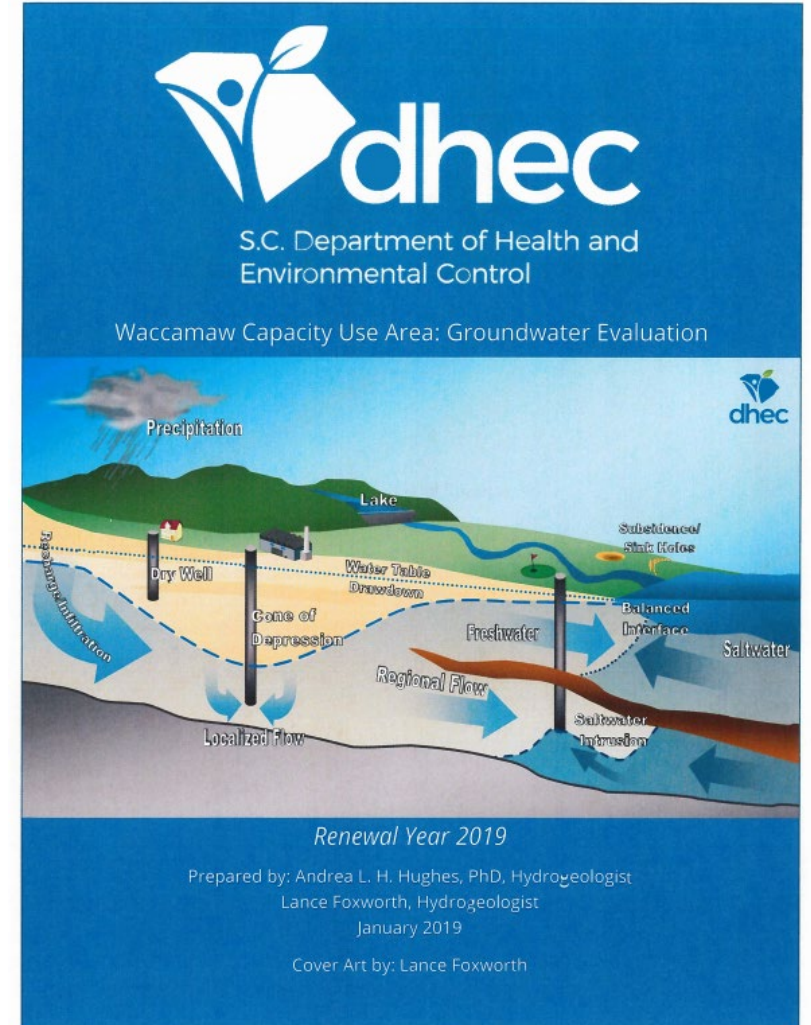
## Groundwater Management Plan Process

<b>Convene Planning Workgroup</b>	<b>Open House Forums</b>	<b>Finalize Plan &amp; Submit to DHEC Board</b>
Publish full calendar of meetings and workgroup members	Input from stakeholders on the draft Groundwater Management Plan	Additional public hearing prior to Board vote
Written comments from public shared with workgroup		Review & issue permits consistent with the plan

## Capacity Use Area Evaluations

Every 5 years, or length of the permitting cycle, total annual groundwater withdrawals are compiled and compared to available aquifer potentiometric maps. The report includes the following:

- Listing of all permitted withdrawers, permitted withdrawal limits, and average groundwater withdrawal;
- Evaluation of withdrawal by category and by aquifer;
- Identification of areas of aquifer stress and all withdrawers utilizing the stressed aquifer(s).





South Carolina Department of Health and Environmental Control

---

# Groundwater Management Plans Across the Pee Dee Basin

Waccamaw, Pee Dee, and Santee-Lynches Capacity Use Areas

---

## Table of Contents

Executive Summary

Introduction

Definitions

Geo-Political Structure

Regional Description

Groundwater Level Trends

Current Groundwater Demand

Groundwater Demand Trends

Population, Growth, and Water Use Projections

Groundwater Management Strategy

Groundwater Management Plan Reports



## Groundwater Management Goals:

- Ensure sustainable development of the groundwater resource by management of groundwater withdrawals
- Monitoring of groundwater quality and quantity to evaluation conditions
- The protection of groundwater quality from salt-water intrusion (Waccamaw and Pee Dee CUAs)
- Promote educational awareness of the resource and its conservation (Santee-Lynches CUA)

## Groundwater Management Strategies

- Strategy: Review of permit applications based on demonstrated reasonable use.
- Strategy: Establish a comprehensive groundwater monitoring program.
- Strategy: Identify areas where a leveling and/or reduction in pumping is appropriate.

## Groundwater Management Strategies

- Strategy: Manage through regulation, assessment, and planning
- Strategy: Establish a conservation educational plan for the general public and existing groundwater withdrawers.
- Strategy: establish a plan for continual stakeholder engagement and awareness of groundwater development (only in Santee Lynches)

# Assessment and Renewal Schedule



# Links to Relevant Documents

- Waccamaw Documents:
  - [2024 Waccamaw Evaluation](#)
  - [Waccamaw Groundwater Management Plan](#)
- Pee Dee Documents:
  - [2020 Pee Dee Evaluation](#)
  - [Pee Dee Groundwater Management Plan](#)
- Santee Lynches Documents:
  - [Initial Groundwater Assessment](#)
  - [Santee Lynches Groundwater Management Plan](#)



South Carolina Department of Health and Environmental Control

---

# Questions?

# Contact Us

Joseph M. Koon

Water Monitoring, Assessment, & Protection

[koonjm@dhec.sc.gov](mailto:koonjm@dhec.sc.gov)

(803) 898-4210

Leigh Anne R. Monroe

Water Quantity Permitting

[monroela@dhec.sc.gov](mailto:monroela@dhec.sc.gov)

(803) 898-2415