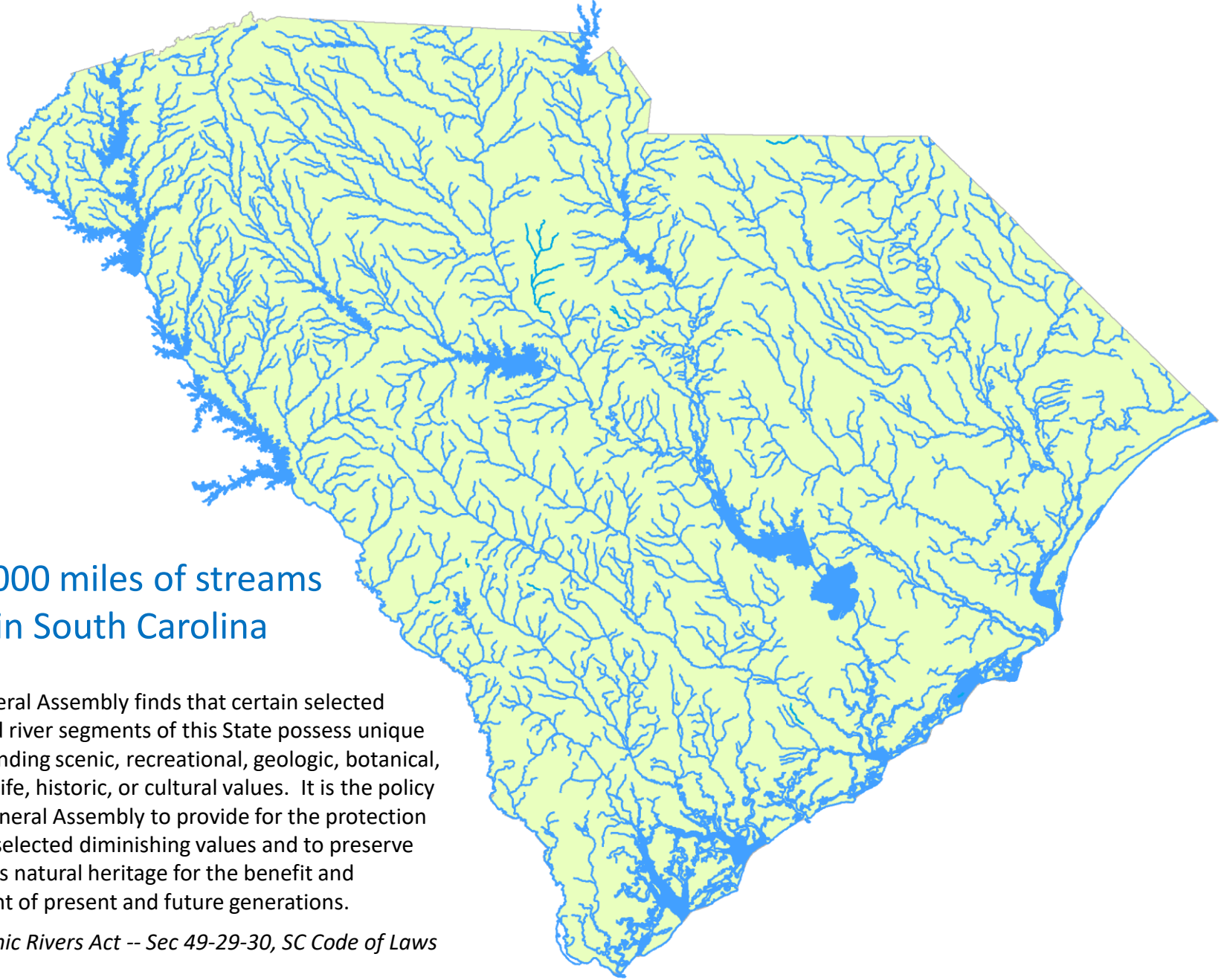


S.C. Scenic Rivers: Pee Dee River Basin

Bill Marshall
S.C. Department of Natural Resources





30,000 miles of streams in South Carolina

The General Assembly finds that certain selected rivers and river segments of this State possess unique or outstanding scenic, recreational, geologic, botanical, fish, wildlife, historic, or cultural values. It is the policy of the General Assembly to provide for the protection of these selected diminishing values and to preserve the state's natural heritage for the benefit and enjoyment of present and future generations.

- S.C. Scenic Rivers Act -- Sec 49-29-30, SC Code of Laws

S.C. Scenic Rivers Act

Provisions & Directives of the Act:

- State Scenic Rivers Program -- SCNDR as management agency
- Inventory and study of rivers -- identify rivers with unique or outstanding values
- Designation of scenic rivers – eligibility study, public meetings, agency approvals, and legislation
- Advisory councils – assist and advise DNR on protection and management of designated scenic rivers
- River management plans
- Riparian land acquisition -- tax incentives for land donations
- The provisions "compliment and are part of the State Water Plan"

State Scenic Rivers Program

Purpose -- S.C. Scenic Rivers Act:

- Protect unique, outstanding resource values of S.C. rivers -- scenic, recreational, geologic, botanical, fish, wildlife, historic, and cultural

Approach:

- Non-regulatory. Community-based partnerships for river conservation & stewardship
- Advisory councils & management plans
- Tax incentives for land donations (fee simple or easements)

Project areas:

- Designated State Scenic Rivers
- River Corridor & Watershed Planning areas



State Scenic Rivers Program

Program Results:

- Inventory & study – S.C. Rivers Assessment
- Designations – 10 State Scenic Rivers
 - Eligible but not designated – Congaree, Little Pee Dee, Edisto, Whitewater and Thompson
 - Unfulfilled Scenic River Requests – at least 5 rivers
- River corridor & watershed plans
 - Lower Saluda, Catawba, Edisto, and Reedy
- Project-level actions and outcomes by DNR & partners



South Carolina State Scenic Rivers

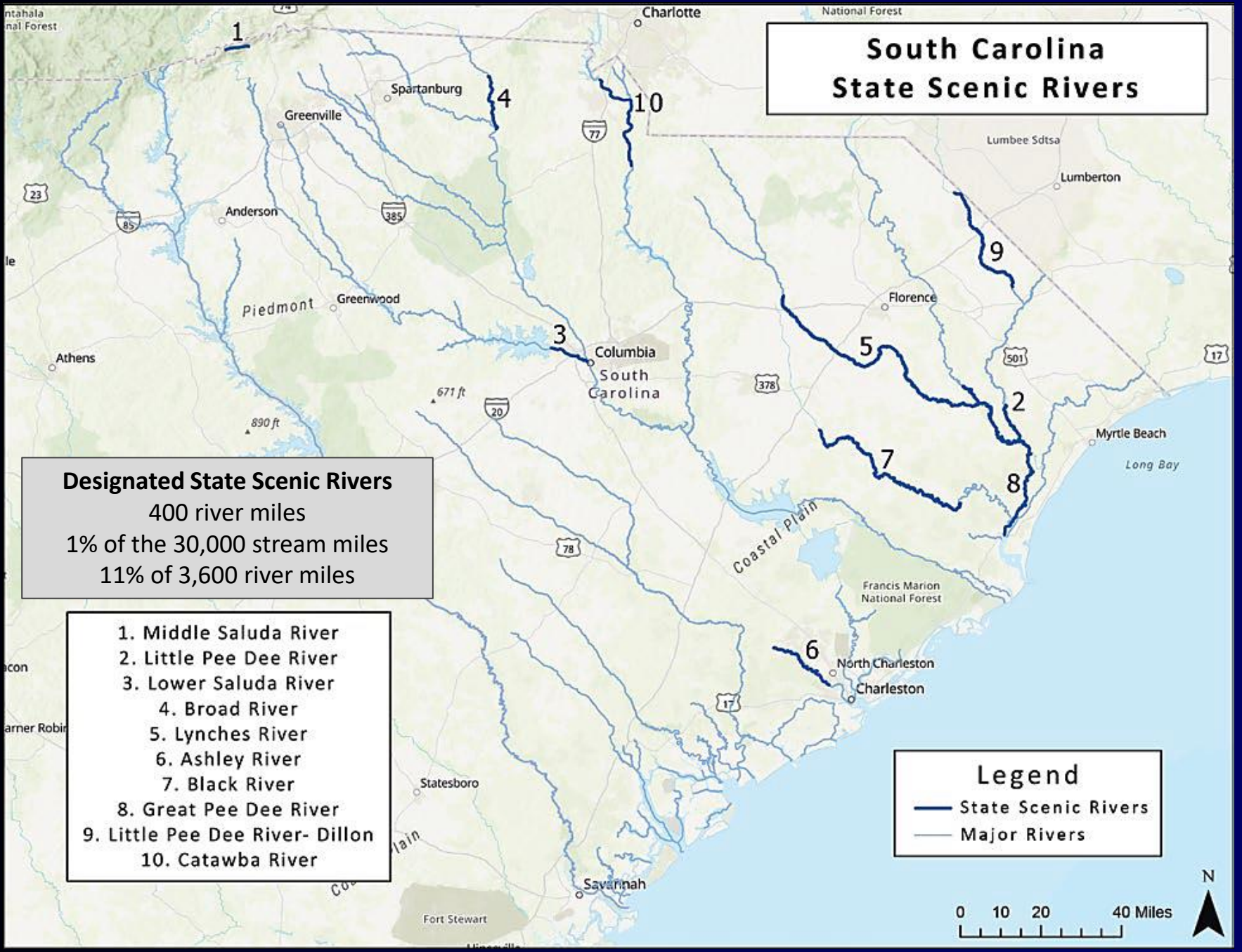
Designated State Scenic Rivers

400 river miles
1% of the 30,000 stream miles
11% of 3,600 river miles

- 1. Middle Saluda River
- 2. Little Pee Dee River
- 3. Lower Saluda River
- 4. Broad River
- 5. Lynches River
- 6. Ashley River
- 7. Black River
- 8. Great Pee Dee River
- 9. Little Pee Dee River- Dillon
- 10. Catawba River

Legend

-  State Scenic Rivers
-  Major Rivers



National Forest

South Carolina State Scenic Rivers

...of the Pee Dee River Basin

Lumberton

Little Pee Dee -
upper
48-mile segment
Designation - 2005

Florence

501

Lynches
111-mile segment
Designation - 1994 & 2008

Little Pee Dee -
lower
14-mile segment
Designation - 1990

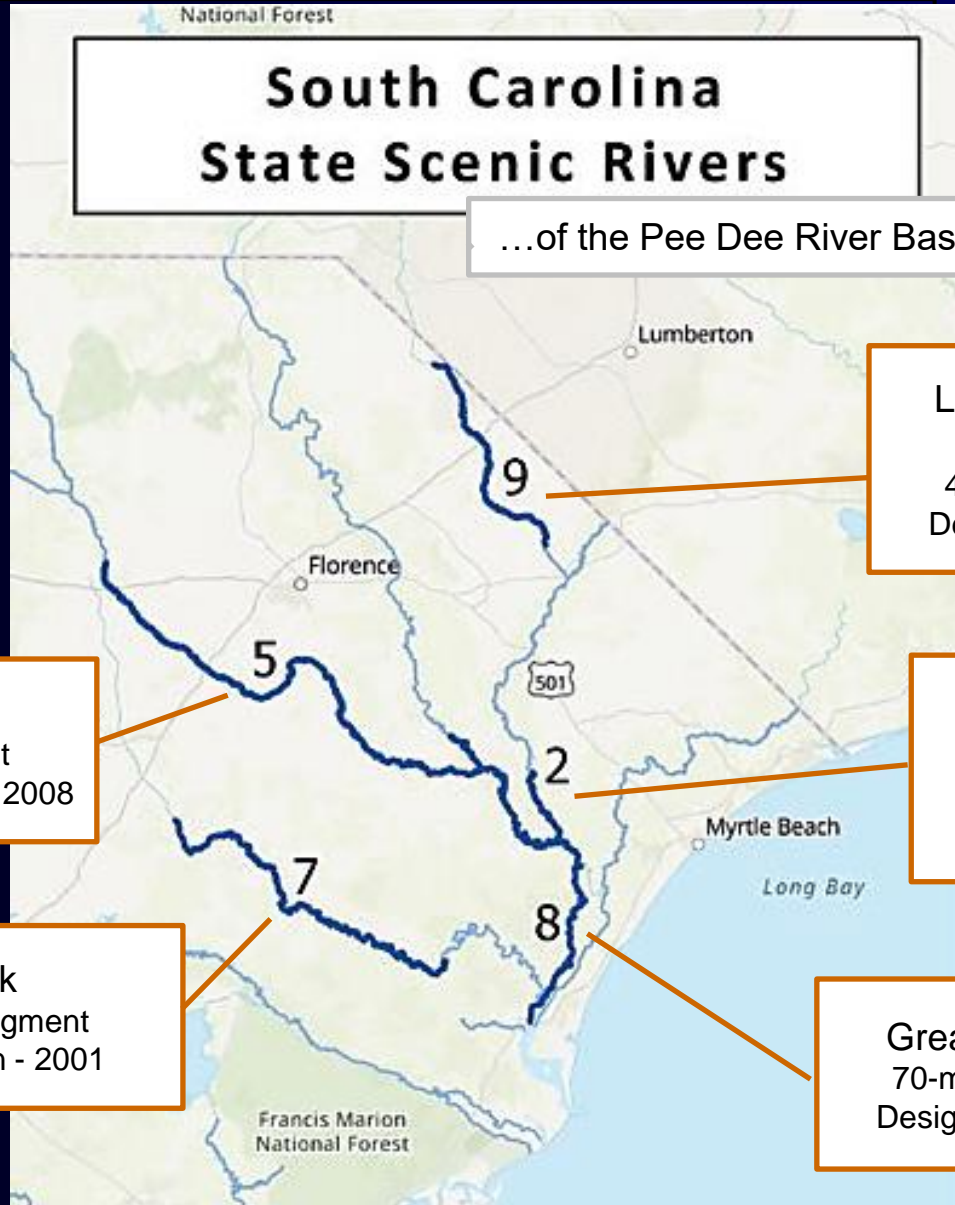
Myrtle Beach

Long Bay

Black
75-mile segment
Designation - 2001

Great Pee Dee
70-mile segment
Designation - 2002

Francis Marion
National Forest



Outstanding River Values



Great Pee Dee

- Inland fisheries
- Wildlife habitat
- Recreational fishing
- Recreational boating
- Natural, undeveloped
- Historical & cultural



Little Pee Dee

- Inland fisheries
- Recreational fishing
- Recreational boating
- Natural, undeveloped



Lynches

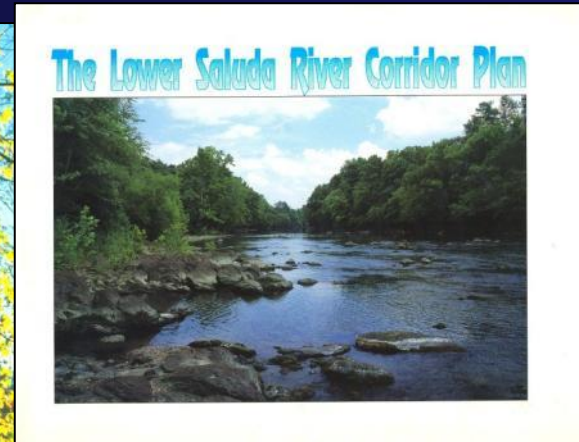
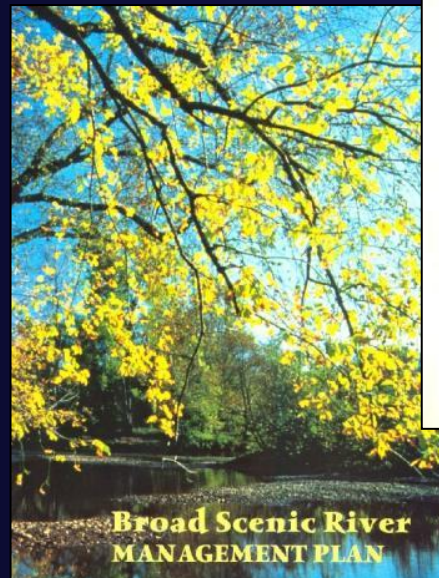
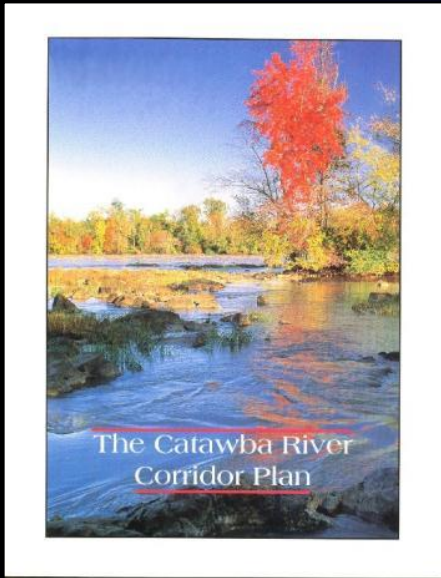
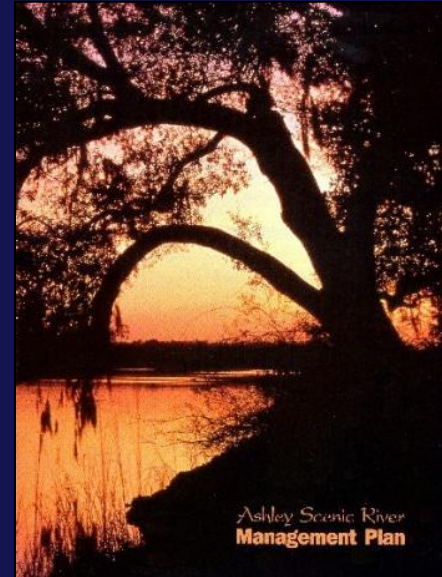
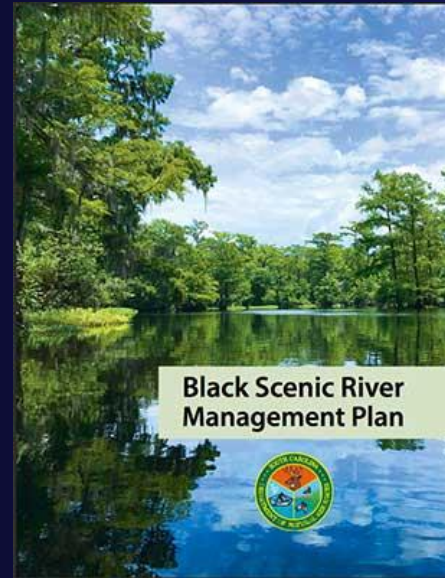
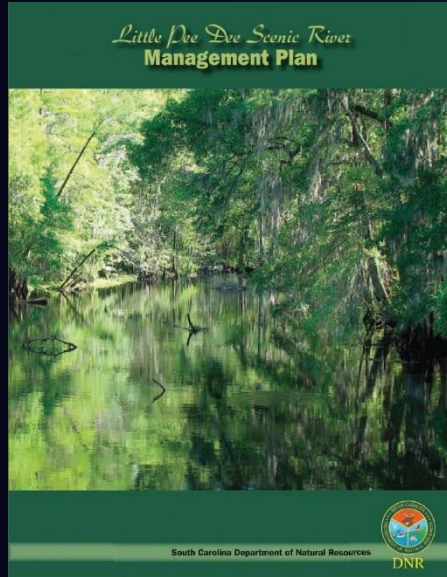
- Inland fisheries
- Recreational fishing
- Recreational boating
- Natural, undeveloped



Black

- Inland fisheries
- Wildlife habitat
- Recreational boating
- Natural, undeveloped

River management plans

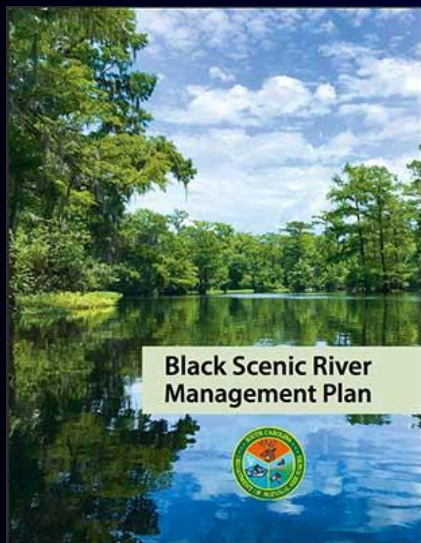


Scenic River Management Plans

River Interest/Issues, Goals, Recommendations

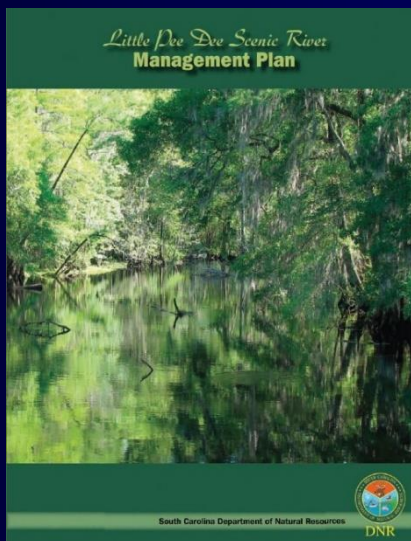
Black River (2020)

- History & Cultural resources
- Land use & development
- Fish & wildlife resources
- Water quality & stream flow
- Recreational use & access



Little Pee Dee River (2008)

- Land use & development
- Water quality & stream flow
- Fish, wildlife & habitat protection
- Recreational use & access



Lynches River (1997, 2003)

- Stewardship/community involvement
- Water quality
- Fisheries
- Wildlife habitat management
- Aesthetics, scenic values
- Recreation & public access





Low streamflow
conditions
Black River



Scenic River Management Plans

Examples of streamflow recommendations

Black River

- Black River can experience extremely low-flow conditions; the related potential effects of water withdrawals on river flows need to be understood and managed to ensure protection of fish and wildlife resources and the ecological health of the river.
- Address streamflow interest by participating in public planning and permitting activities affecting water use and withdrawals. Provide input to public decisions to conserve flow conditions needed for ecological health of the Black River system.

Little Pee Dee River

- Maintain flows in the river that will protect and support public health and safety, aquatic life and ecological values, recreational uses, and navigation.
- Policy recommendations of State Water Plan: reservoir operators are to release instantaneous or daily average flows in sufficient volume to maintain adequate habitat for downstream aquatic organisms and address needs of downstream users.

Lynches River

- Maintenance of appropriate instream flow is critical to protection of the Lynches River fisheries.
- The free-flowing nature of the river should be maintained.
- Instream flow should be kept at historic levels to maintain quality fish habitat.



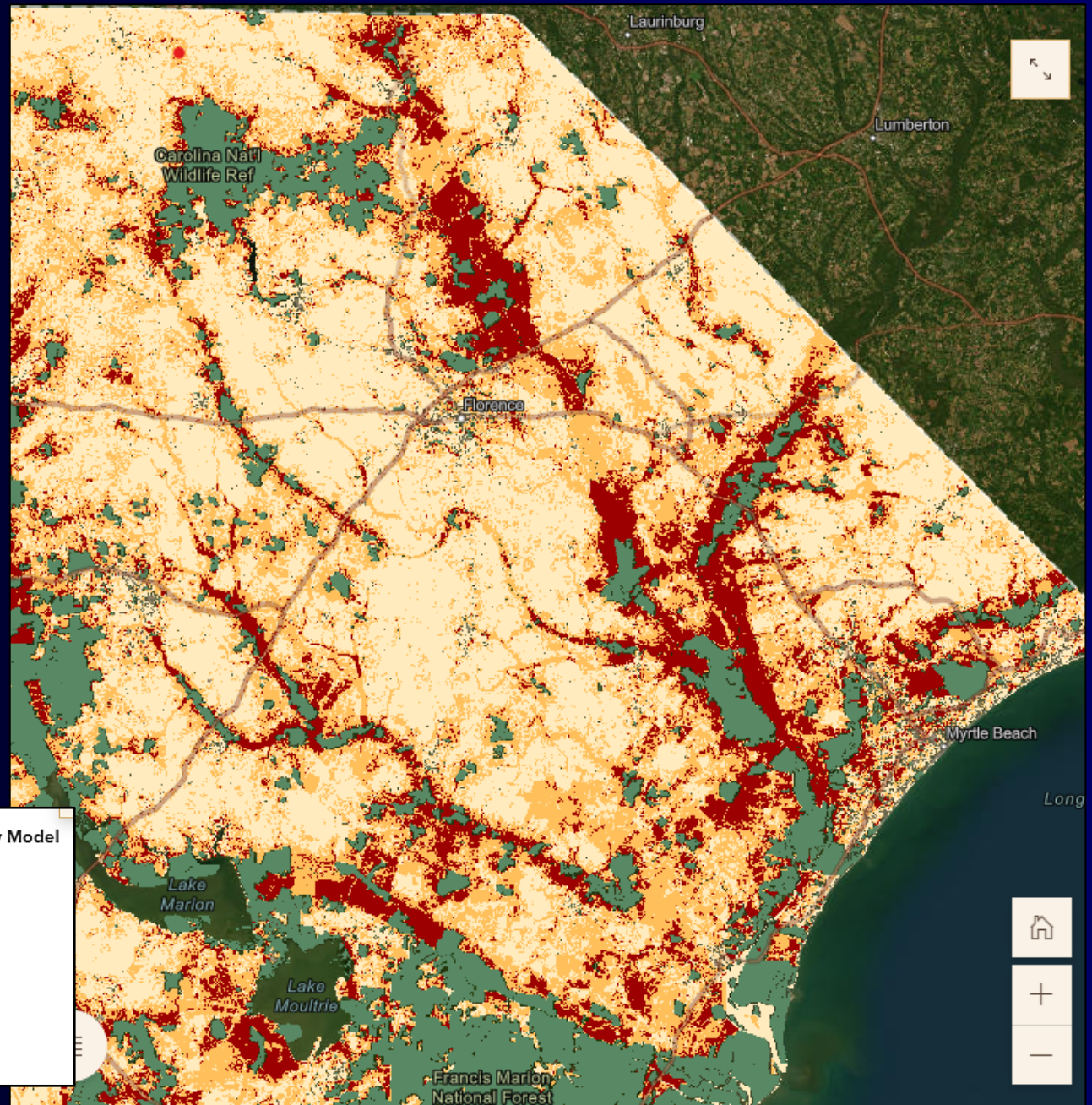
Land conservation in river corridors

SCCB Conservation Priority Model

PriorityModel

Value

- Low Priority
- Medium Priority
- High Priority
- Existing Protected Lands

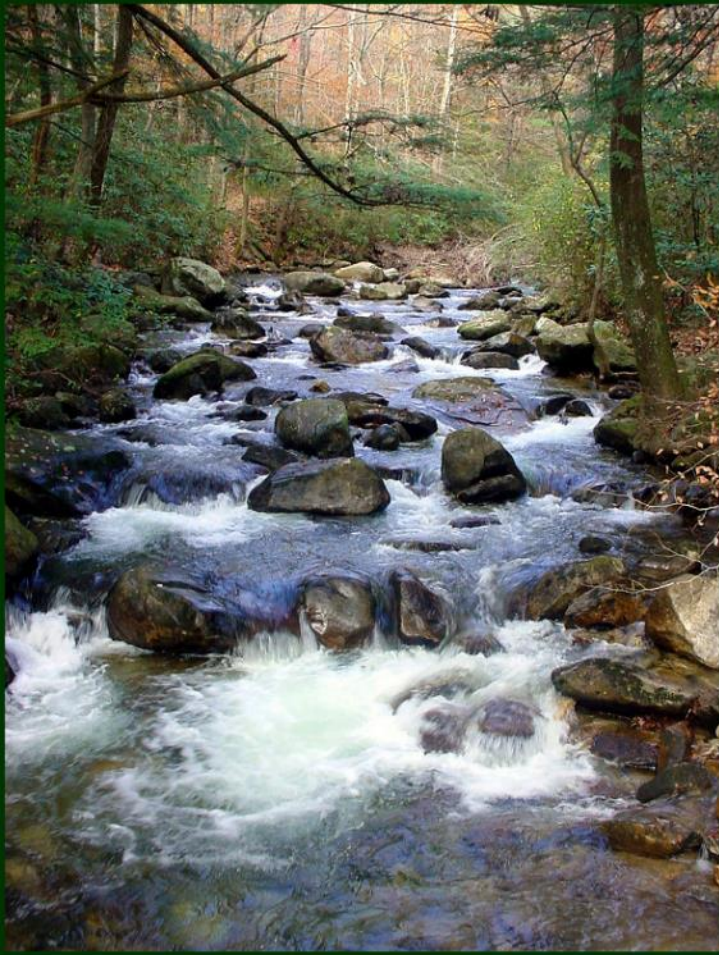


State Scenic River Projects

Project-level actions & outcomes:

- Engage with public permitting and local planning
- Corridor plans to enhance public recreational access
- Landowner technical assistance, workshops, BMPs
- River festivals, outreach-education, field trips
- River safety awareness and law enforcement
- Water trails & trail guides
- Land protection
- Volunteer monitoring of water quality
- Trash cleanups

*South Carolina Rivers -
Treasures from mountains to sea*



End