

Upper Savannah River Basin Land Use and Socioeconomic Characteristics

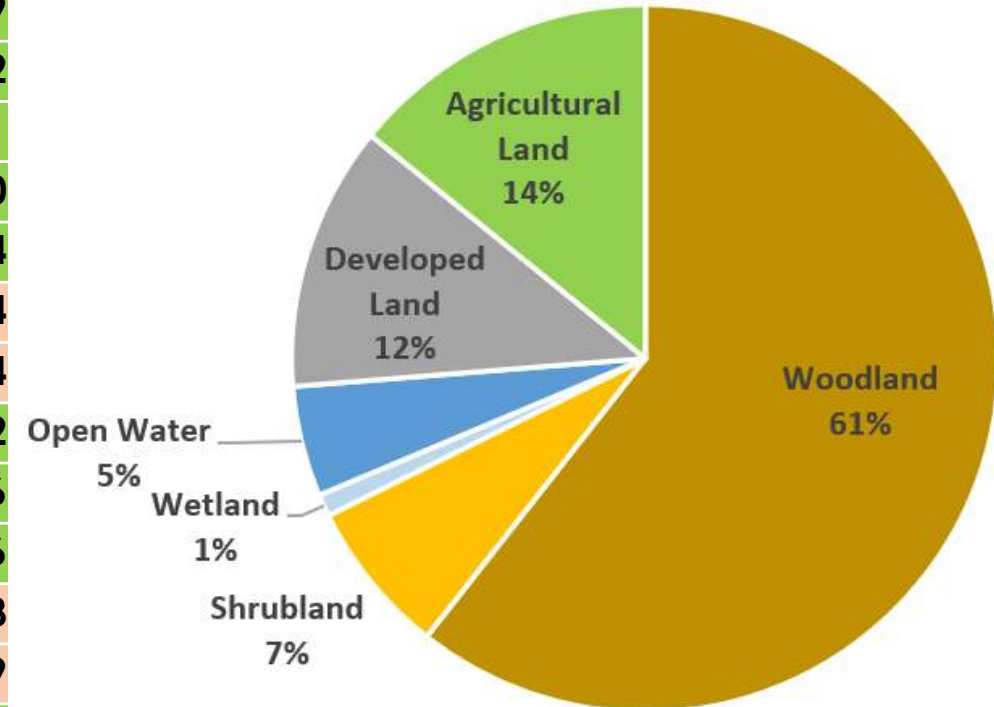
Evan Patrohay, CDM Smith

Chapter 2 of the River Basin Plan Covers...

- Physical Environment
- Climate
- Natural Resources
- Agricultural Resources
- Socioeconomic Environment

Upper Savannah River Basin Land Cover

NLCD Land Cover Class	2001 Area (sq. miles)	2019 Area (sq. miles)	Change from 2001 to 2019 (sq. miles)	% of Total Land (2019)
Open Water	154.7	157.6	2.9	4.9
Developed, Open Space	220.9	229.7	8.8	7.2
Developed, Low Intensity	89.7	98.5	8.8	3.1
Developed, Medium Intensity	22.1	32.8	10.7	1.0
Developed, High Intensity	9.0	11.9	2.9	0.4
Barren Land	7.6	5.6	-2.0	0.4
Deciduous Forest	772.7	716.3	-56.4	22.4
Evergreen Forest	830.1	837.4	7.3	26.2
Mixed Forest	354.6	369.8	15.2	11.6
Shrub/Scrub	48.7	115.3	66.7	3.6
Herbaceous	141.9	121.5	-20.4	3.8
Hay/Pasture	492.3	445.7	-46.6	13.9
Cultivated Crops	6.5	7.9	1.4	0.2
Woody Wetlands	41.6	41.6	0.0	1.3
Emergent Herbaceous Wetlands	3.0	3.7	0.7	0.1
Total Land Area	3195.4	3195.4	0.0	100.0

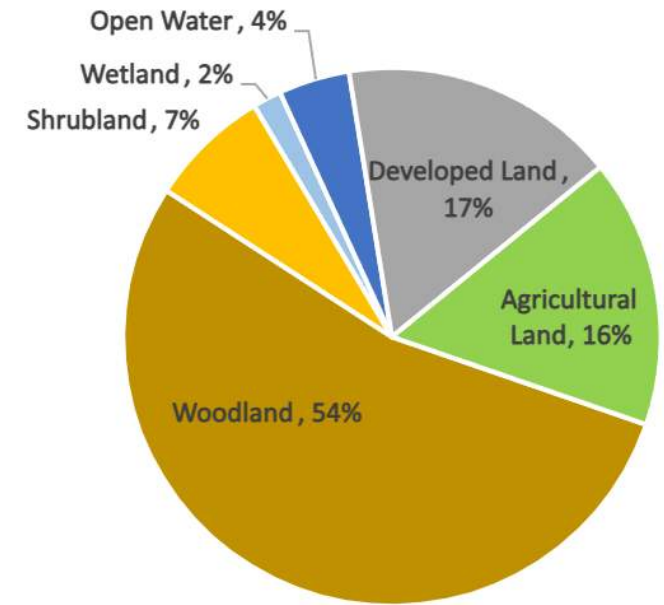
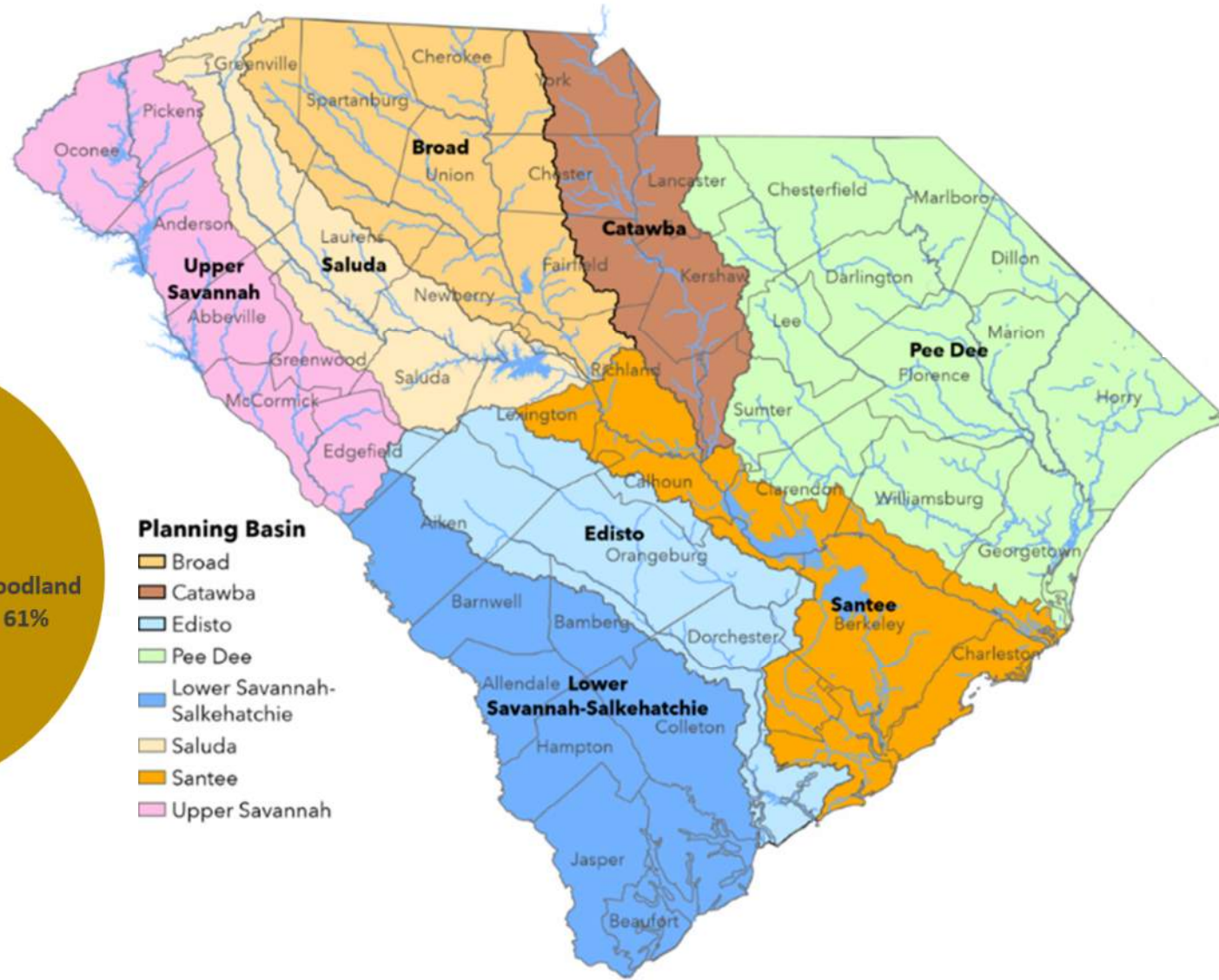


Increase from 2001 to 2019

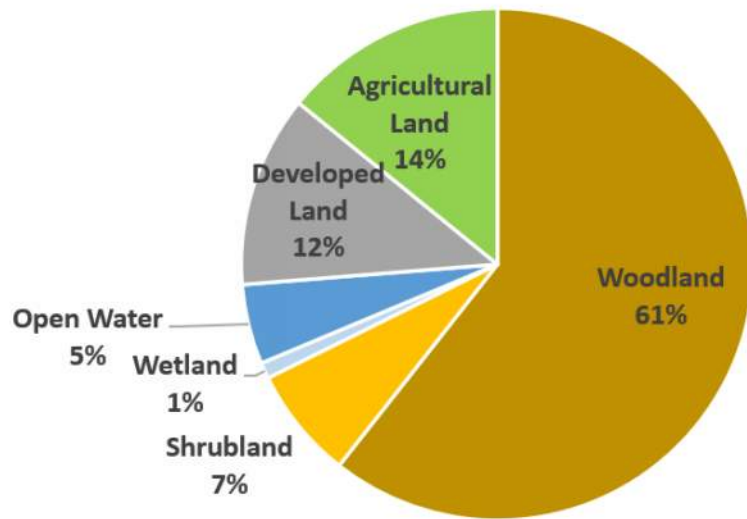
Decrease from 2001 to 2019

Source: USGS National Land Cover Database

Comparison of Land Cover Upper Savannah and Saluda River Basins

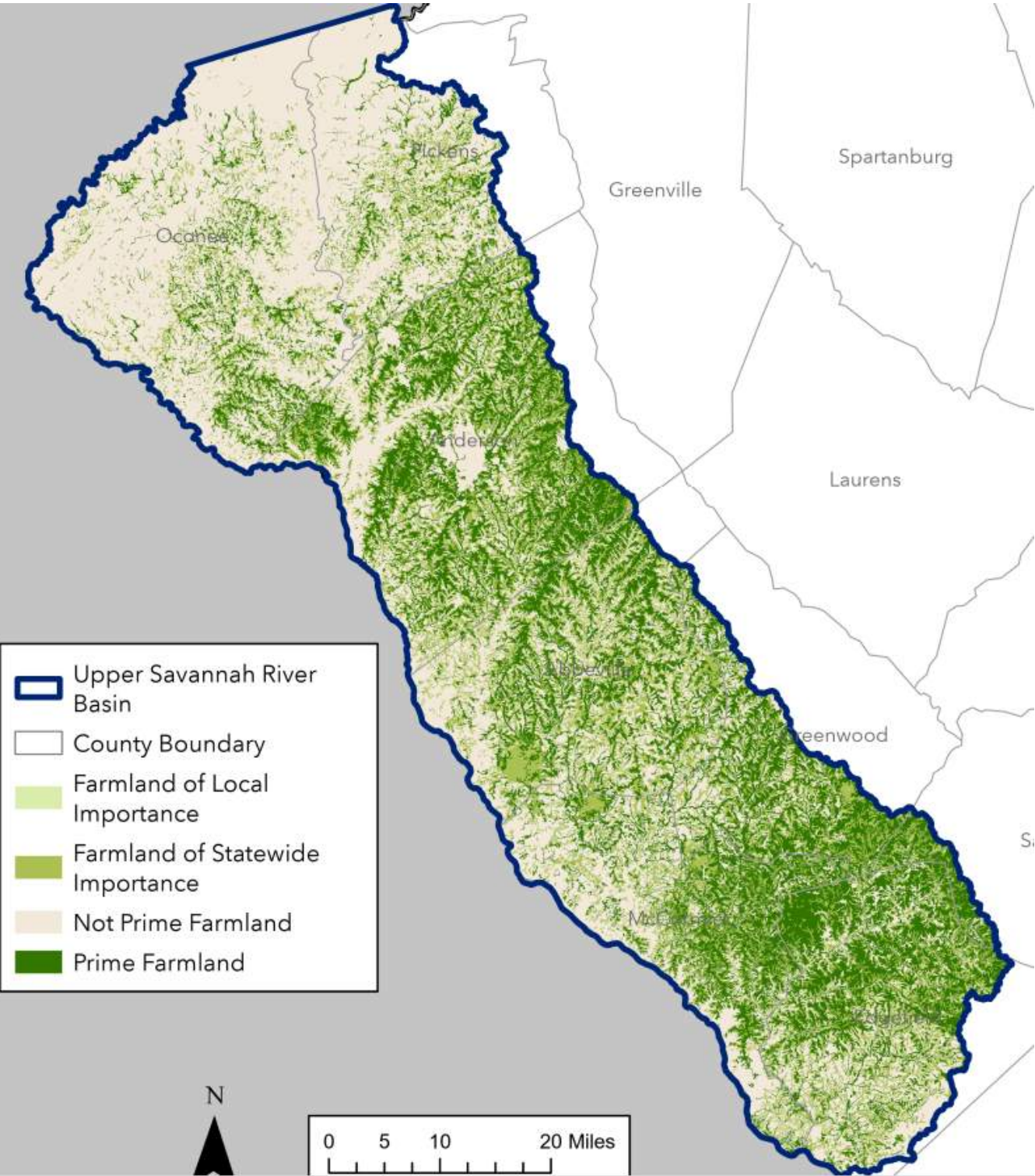


Saluda



Upper Savannah

Prime Farmland



Farmland Type	Area (sq mi)	Percent of Basin
Prime Farmland	1293	28%
Farmland of Statewide Importance	1037	22%
Farmland of Local Importance	< 0.1	< 0.01%
Not Prime Farmland	2370	50%
Total	4700	100%

Upper Savannah River Basin Counties

Counties

- Oconee
- Pickens
- Anderson
- Abbeville
- Greenwood
- McCormick
- Edgefield
- Saluda (minor)

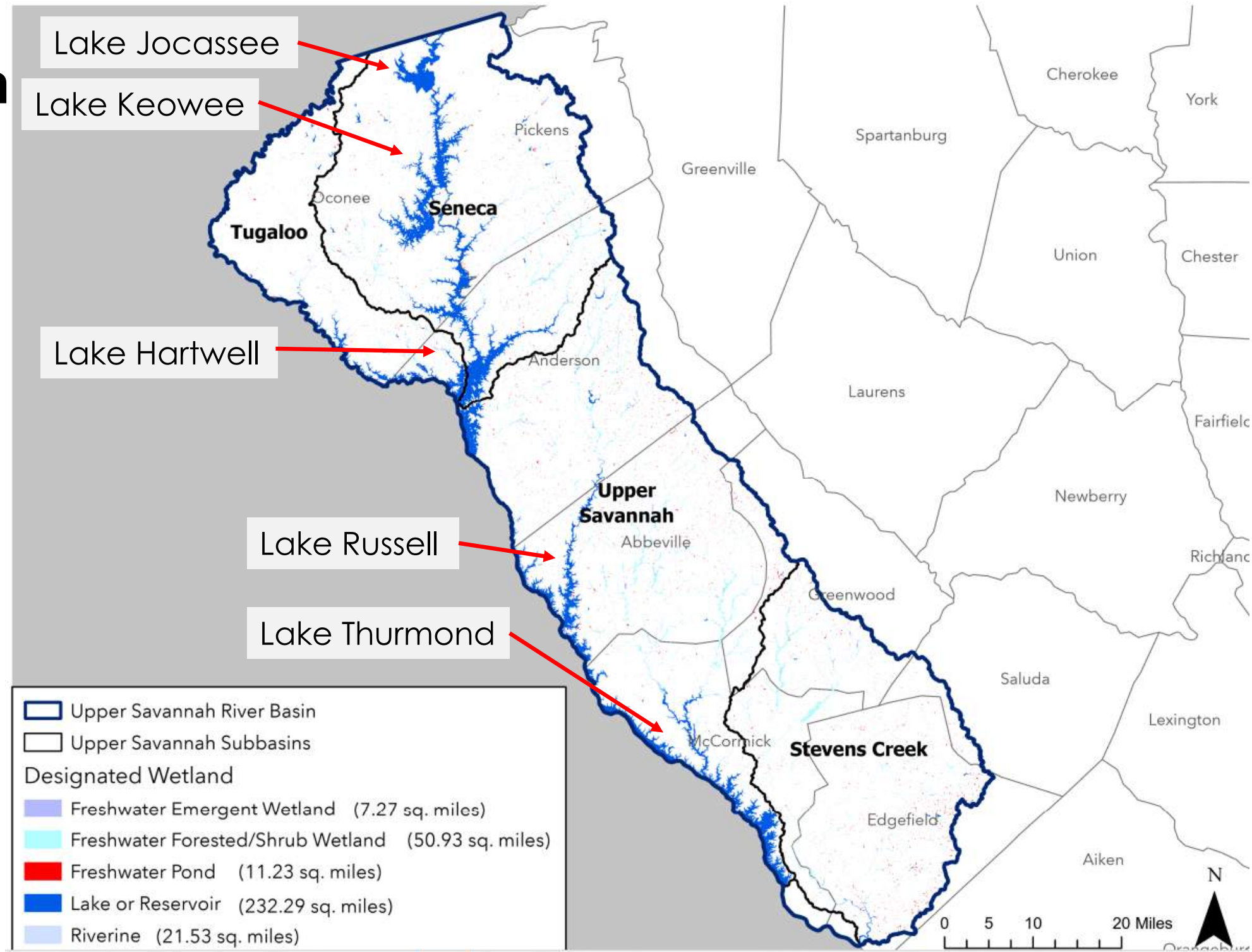


Upper Savannah River Basin Lakes

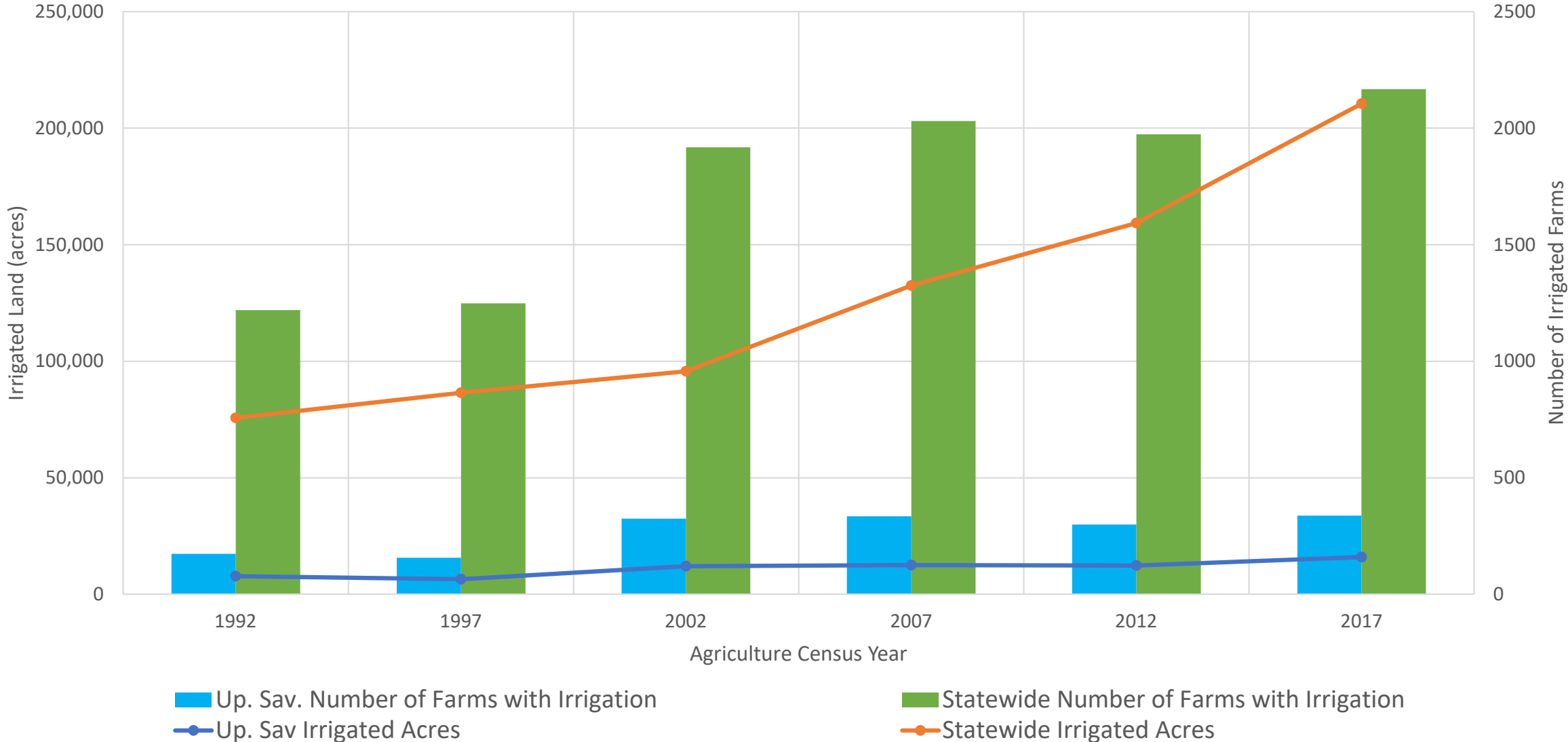
Major Lakes

- Lake Jocassee
- Lake Keowee
- Lake Hartwell
- Lake Russell
- Lake Thurmond

232 sq mi of lakes in total!



Number of Farms with Irrigation and Irrigated Acres in Counties in the Upper Savannah River Basin*, 1992-2017



* Totals include portions of the counties that are outside the Upper Savannah River basin

Source: USDA NASS Census of Agriculture 1992, 2002, 2012, and 2017

Summary of 2017 Census of Agriculture Data for Counties in the Upper Savannah River Basin*

All Values in Acres	Total All Counties	Abbeville	Anderson	Edgefield	Greenwood	McCormick	Oconee	Pickens	Saluda
Total Farm Operation	685,070	88,504	183,718	78,545	72,274	40,704	62,499	39,331	119,495
Total Cropland	195,302	18,796	69,888	23,223	15,078	3,857	18,908	12,245	33,307
Total Harvested Cropland	140,875	11,586	49,162	17,744	10,701	2,040	14,683	9,136	25,823
Total Irrigated Land	15,951	278	612	8,852	237	(D)	390	183	5,399
Total Hay and Haylage Harvested	98,334	10,773	37,860	5,513	10,304	1,440	11,240	7,477	13,727
Total Soybeans Harvested	11,279	254	7,228	1,058	-	(D)	1,892	253	594
Total Corn (Grain) Harvested	5,070	(D)	1,268	754	64	(D)	601	462	1,921
Total Cotton Harvested	0	(D)	(D)	(D)	-	-	-	-	-
Total Vegetables Harvested	620	81	346	(D)	33	5	85	70	(D)
Total Wheat Harvested	5,248	219	2,705	536	(D)	(D)	1,344	(D)	444
Total Corn (Silage) Harvested	1,429	-	(D)	(D)	(D)	-	-	(D)	1,429
Total Orchards Harvested	13,090	50	250	7,328	59	36	133	167	5,067
Total Peanuts Harvested	-	-	-	-	-	-	-	-	-
Total Oats Harvested	682	(D)	326	(D)	38	-	76	(D)	242

D = not disclosed/reported

* Totals include portions of the counties that are outside the Upper Savannah River basin

Source: USDA NASS Census of Agriculture 2017

Summary of 2017 Census of Agriculture Data for Counties in the Upper Savannah River Basin*

	Total All Counties	Abbeville	Anderson	Edgefield	Greenwood	McCormick	Oconee	Pickens	Saluda
Total Cattle Operations (#)	2,471	326	833	102	226	40	394	247	303
Total Cows/Beef Operations (#)	2,206	306	711	90	205	37	354	218	285
Total Cows/Milk Operations (#)	48	4	17	7	1	2	9	3	5
Total Hogs Operations (#)	200	25	38	10	23	2	45	28	29
Total Sheep Operations (#)	193	20	43	21	28	-	35	36	10
Total Chicken Layers (Egg) Operations (#)	828	91	298	79	47	9	120	141	43
Total Chicken Broilers (Meat) Operations (#)	151	9	27	3	3	2	58	6	43

* Totals include portions of the counties that are outside the Upper Savannah River basin

Source: USDA NASS Census of Agriculture 2017

Summary of 2017 Census of Agriculture Data for Counties in the Upper Savannah River Basin*

Values in Million \$	Total all Counties	Abbeville	Anderson	Edgefield	Greenwood	McCormick	Oconee	Pickens	Saluda
Total Commodity Sales	461	9	75	38	10	3	159	7	160
Total Crop Sales	65	1	10	25	2	(D)	4	4	19
Total Animal Sales	393	8	65	13	8	(D)	155	3	141

D = not disclosed/reported

Source: USDA NASS Census of Agriculture 2017

* Totals include portions of the counties that are outside the Upper Savannah River basin



Value of Timber in Counties in the Upper Savannah River Basin* and State Totals

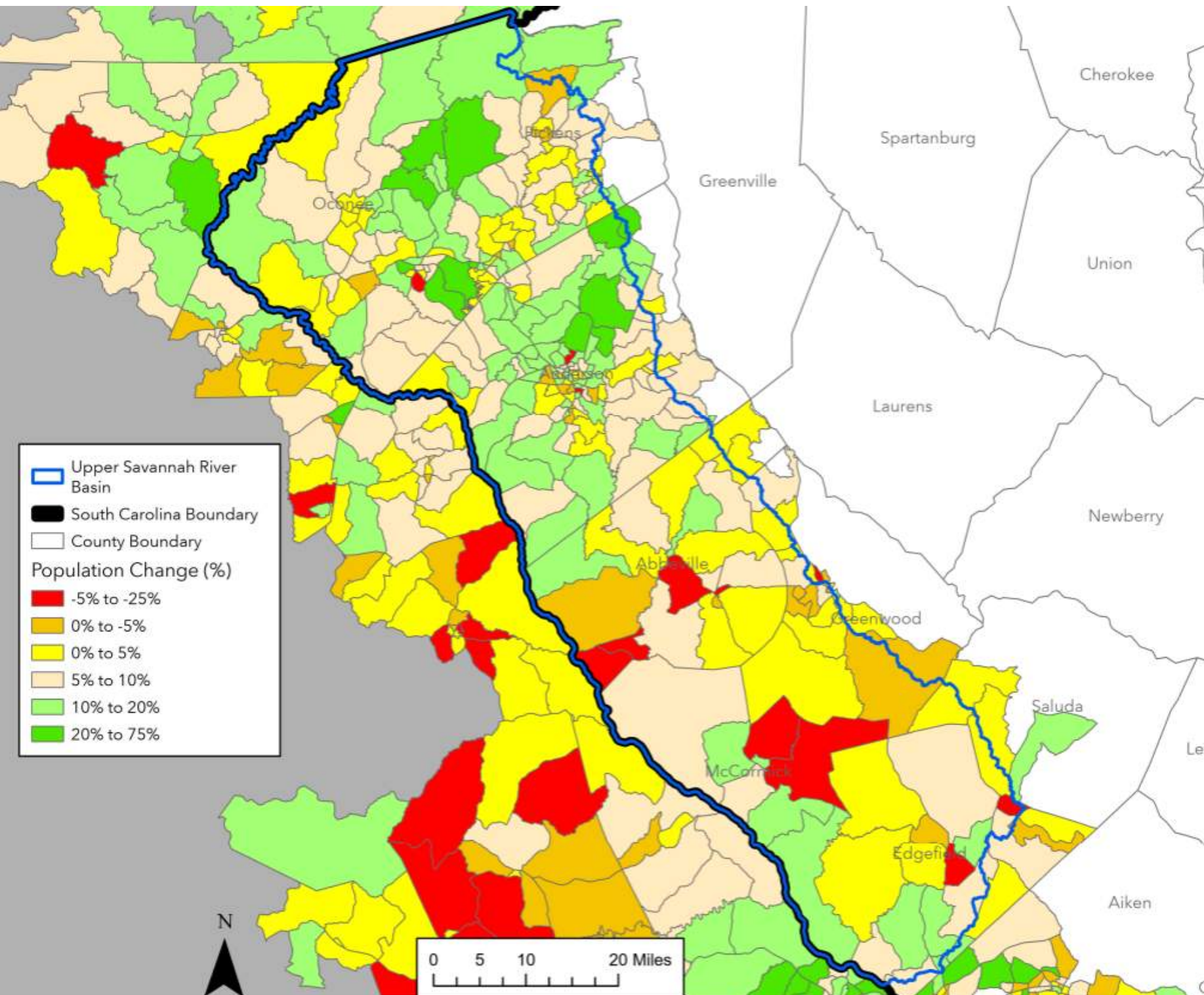
	Upper Sav. Basin Counties Total	State Total
Acres of Forestland	1,795,275	12,849,182
Percent Forest	70%	66%
Harvested Timber Value (Million \$) - Stumpage	\$49.3	\$573.7
Harvested Timber Value (Million \$) - Delivered	\$104.4	\$1,162.3



* Totals include portions of the counties that are outside the Upper Savannah River basin

Source: SC Forestry Commission, "Value of SC's Timber" (2021)

Population Change, 2010-2020



Population Density, 2020

