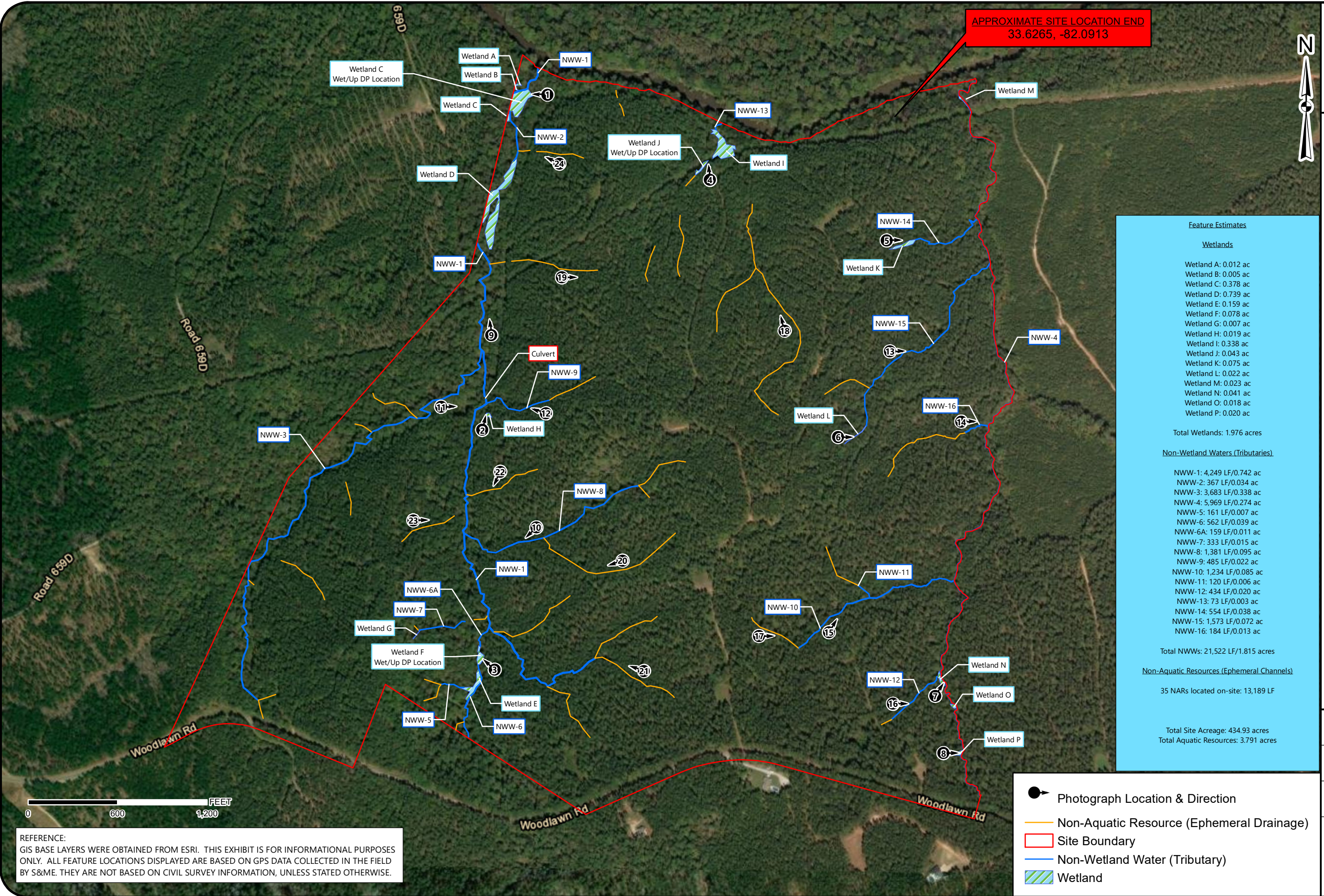


Drawing Path: T:\Charlotte-1350\Projects\2022\22350640\_Luck Co\_Luck Stone Edgfield Mine Site\_Winnsboro SC\4\_Energy\GIS\Columbia\_NR\_Fieldwork\Mxd\Aerial Exhibit.mxd plotted by chandley 11-27-2023



REFERENCE:  
 GIS BASE LAYERS WERE OBTAINED FROM ESRI. THIS EXHIBIT IS FOR INFORMATIONAL PURPOSES ONLY. ALL FEATURE LOCATIONS DISPLAYED ARE BASED ON GPS DATA COLLECTED IN THE FIELD BY S&M.E. THEY ARE NOT BASED ON CIVIL SURVEY INFORMATION, UNLESS STATED OTHERWISE.

APPROXIMATE SITE LOCATION END  
 33.6265, -82.0913

| Feature Estimates                                 |                       |
|---|-----------------------|
| <b>Wetlands</b>                                   |                       |
| Wetland A:  | 0.012 ac              |
| Wetland B:  | 0.005 ac              |
| Wetland C:  | 0.378 ac              |
| Wetland D:  | 0.739 ac              |
| Wetland E:  | 0.159 ac              |
| Wetland F:  | 0.078 ac              |
| Wetland G:  | 0.007 ac              |
| Wetland H:  | 0.019 ac              |
| Wetland I:  | 0.338 ac              |
| Wetland J:  | 0.043 ac              |
| Wetland K:  | 0.075 ac              |
| Wetland L:  | 0.022 ac              |
| Wetland M:  | 0.023 ac              |
| Wetland N:  | 0.041 ac              |
| Wetland O:  | 0.018 ac              |
| Wetland P:  | 0.020 ac              |
| <b>Total Wetlands:</b>                            | 1.976 acres           |
| <b>Non-Wetland Waters (Tributaries)</b>           |                       |
| NWW-1:  | 4,249 LF/0.742 ac     |
| NWW-2:  | 367 LF/0.034 ac       |
| NWW-3:  | 3,683 LF/0.338 ac     |
| NWW-4:  | 5,969 LF/0.274 ac     |
| NWW-5:  | 161 LF/0.007 ac       |
| NWW-6:  | 562 LF/0.039 ac       |
| NWW-6A:   | 159 LF/0.011 ac       |
| NWW-7:  | 333 LF/0.015 ac       |
| NWW-8:  | 1,381 LF/0.095 ac     |
| NWW-9:  | 485 LF/0.022 ac       |
| NWW-10:   | 1,234 LF/0.085 ac     |
| NWW-11:   | 120 LF/0.006 ac       |
| NWW-12:   | 434 LF/0.020 ac       |
| NWW-13:   | 73 LF/0.003 ac        |
| NWW-14:   | 554 LF/0.038 ac       |
| NWW-15:   | 1,573 LF/0.072 ac     |
| NWW-16:   | 184 LF/0.013 ac       |
| <b>Total NWWs:</b>                                | 21,522 LF/1.815 acres |
| <b>Non-Aquatic Resources (Ephemeral Channels)</b> |                       |
| 35 NARs located on-site: 13,189 LF                |                       |
| <b>Total Site Acreage:</b> 434.93 acres           |                       |
| <b>Total Aquatic Resources:</b> 3,791 acres       |                       |

- Photograph Location & Direction
- Non-Aquatic Resource (Ephemeral Drainage)
- Site Boundary
- Non-Wetland Water (Tributary)
- Wetland

**Aerial Exhibit**

Luck Edgfield +/- 434.93 Acres  
 Clarks Hill, Edgfield County, South Carolina  
 Source: World Imagery 2020

SCALE:  
 1" = 600'

DATE:  
 11-27-23

PROJECT NUMBER  
 22350640

EXHIBIT NO.