



May 27, 2019

Scott McDaniel  
Haile Gold Mine, Inc.  
P.O. Box 128  
Kershaw, S.C. 29067

RE: Approval of Modification to a Mine Operating Permit (Mod 19-1)  
Permit I-000601, Haile Gold Mine, Haile Gold Mine, Inc., Lancaster County

Dear Mr. McDaniel:

The South Carolina Department of Health and Environmental Control (DHEC) has approved the application to modify the Mine Operating Permit I-000601. The modification request was to construct "East PAG – Phase I", a 157.4ac Potentially Acid Generating (PAG) cell to store low, medium, and high grade ore for processing. Construction of this PAG cell will, in part, repurpose the area previously designated as "Roberts OSA". In addition, this modification request was to construct "500 Pond", an 11.3ac contact water collection pond connected to East PAG.

East PAG – Phase I and 500 Pond shall be built to similar specifications as Johnny's PAG and other approved contact water collection ponds, as outlined in the NewFields technical schematics submitted with the application and attached to this letter for your reference. No wetlands shall be directly impacted by the construction of these areas. A minimum 100ft. buffer and best management practices shall be employed around these sites to avoid directly impacting these nearby wetlands.

DHEC is in receipt of the additional financial assurance for this modification; there are no changes to the financial assurance schedule, as shown in figure BOND-601-V5 of the mine operating permit. At Haile Gold Mine's request, the financial assurance designated for Mod 18-2 (Parking Lot PAG) has been applied to this modification's financial assurance. Therefore, the construction of the Parking Lot PAG is no longer authorized. (It is still designated as affected land and can be used for general purpose.)

Should there be any questions or if DHEC may be of further assistance, please do not hesitate to contact Jeremy Eddy at 803-898-7609 or by e-mail at [eddyje@dhec.sc.gov](mailto:eddyje@dhec.sc.gov).

Sincerely,

Juli Blalock, Director  
Division of Mining and Solid Waste Management

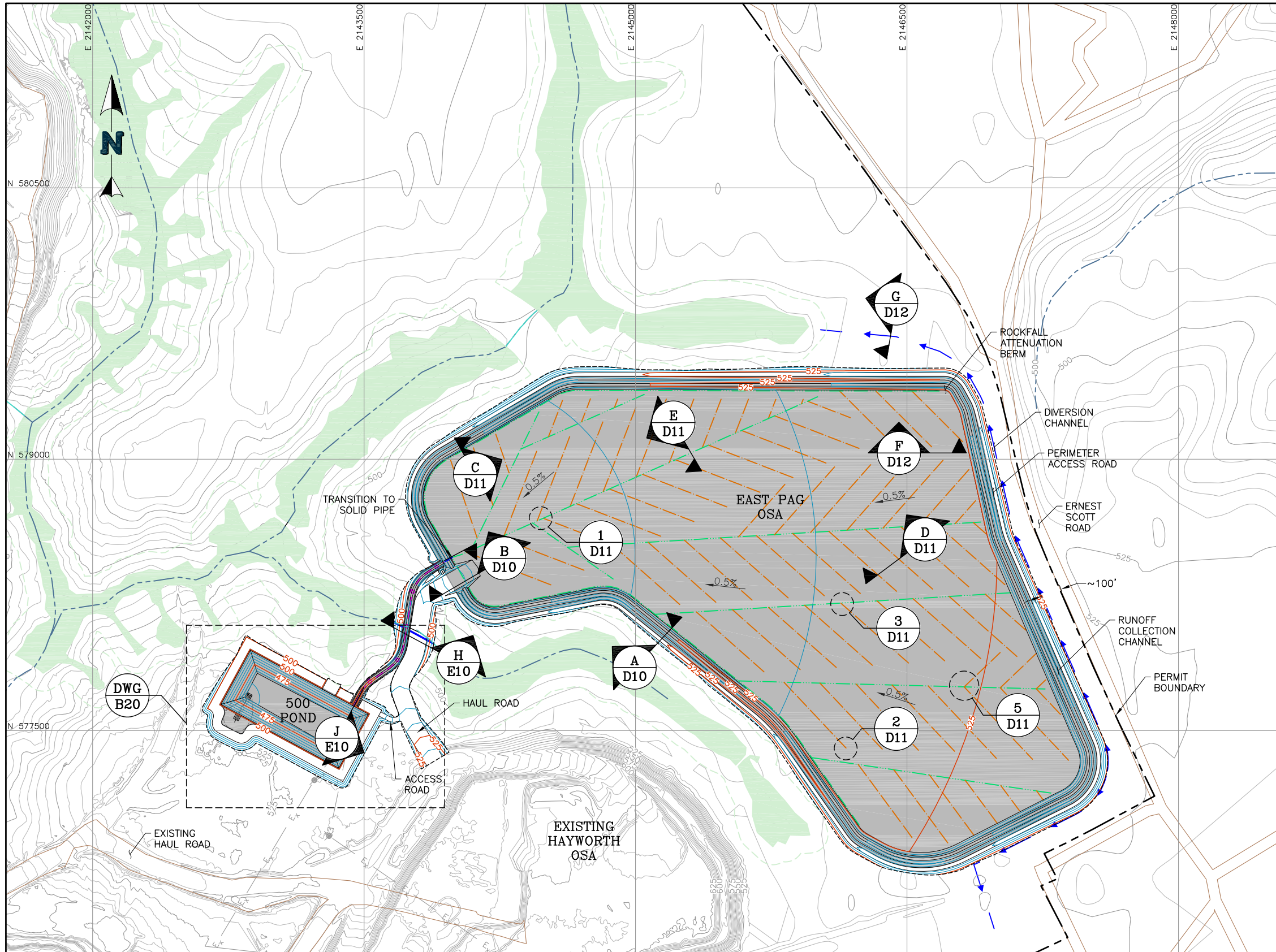
cc Joe Koon, DMSWM  
Jeremy Eddy, DMSWM  
Brett Caswell, BOW  
Veronica Barringer, Regional Director  
Steve Willis, Lancaster County ([swillis@lancastercountysc.net](mailto:swillis@lancastercountysc.net))

S.C. Department of Health and Environmental Control

2600 Bull Street, Columbia, SC 29201

(803) 898-3432

[www.scdhec.gov](http://www.scdhec.gov)



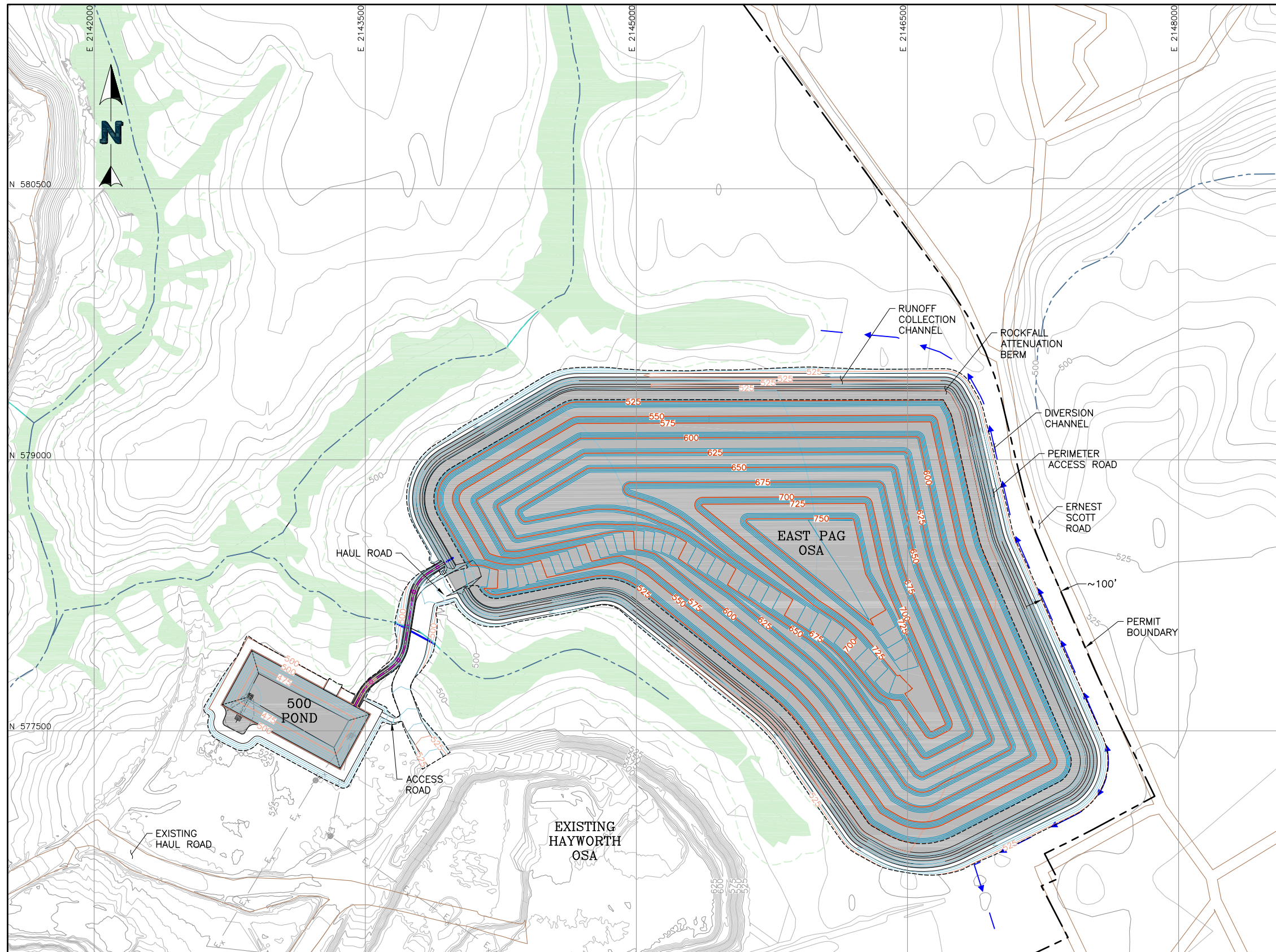
- LEGEND:**
- EXISTING GROUND CONTOURS
  - EAST PAG OSA CONTOURS
  - ANCILLARY FACILITY CONTOURS
  - EXISTING ROADS
  - EXISTING DRAINAGES
  - PERMIT BOUNDARY
  - 4 IN DIA. PERFORATED CPe COLLECTION PIPE
  - 8 IN DIA. PERFORATED CPe COLLECTION PIPE
  - 8 IN DIA. SOLID HDPE OUTLET PIPE
  - WETLANDS
  - PROPOSED GEOMEMBRANE LIMITS
  - DIVERSION CHANNEL

- NOTES:**
- PROPOSED CONTOURS REPRESENT TOP OF LOW-PERMEABILITY SOIL LINER WITHIN THE GEOMEMBRANE LIMITS AND FINISHED GRADE EVERYWHERE ELSE.



				APPROVED BY: JNM	<p><b>DISCLAIMER</b></p> <p>NEWFIELDS PRODUCED THE INFORMATION PRESENTED ON THIS DRAWING THROUGH THE USE OF AVAILABLE TECHNICAL INFORMATION AND EXPERIENCE. RECEIVING THIS DRAWING DOES NOT GUARANTEE ANY RIGHTS TO EITHER SUCH TECHNICAL INFORMATION OR EXPERIENCE. ANY MODIFICATION OR ADAPTATION OF THE DATA OR DRAWING SHALL BE AT USER'S RISK AND WITHOUT ANY LIABILITY OR LEGAL RESPONSIBILITY TO NEWFIELDS.</p>	<p><b>NewFields</b> CLIENT HAILE GOLD MINE INC.</p>
				CHECKED BY: CTB		
				DESIGNED BY: JNM		
				DRAWN BY: MJR		
B	01/18/19	ISSUED FOR PERMITTING	MJR	JNM	PROJECT EAST PAG OSA	<p>TITLE GRADING PLAN</p>
A	01/16/19	ISSUED FOR CLIENT REVIEW	MJR	JNM	FILENAME 42.017.001M	
REV	DATE	DESCRIPTION	TECH	ENG	DRAWING NO. B10	REVISION B



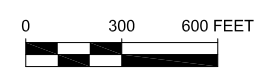


**LEGEND:**

- EXISTING GROUND CONTOURS
- EAST PAG OSA CONTOURS
- PAG STACKING CONTOURS
- EXISTING ROADS
- EXISTING DRAINAGES
- PERMIT BOUNDARY
- WETLANDS
- PROPOSED GEOMEMBRANE LIMITS
- DIVERSION CHANNEL

**NOTES:**

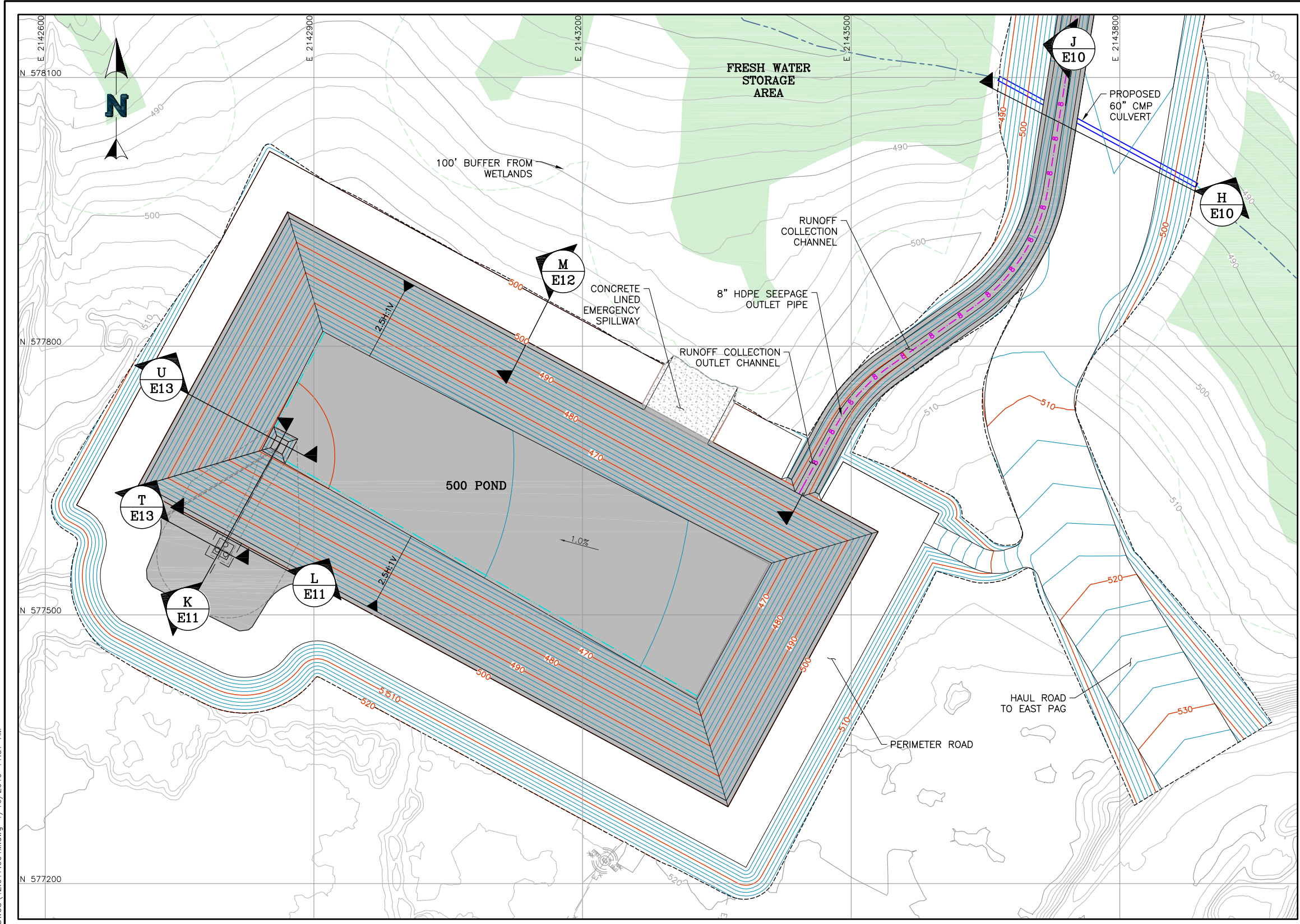
1. PROPOSED CONTOURS REPRESENT TOP OF LOW-PERMEABILITY SOIL LINER WITHIN THE GEOMEMBRANE LIMITS AND FINISHED GRADE EVERYWHERE ELSE.
2. THE PROPOSED EAST PAG OVERBURDEN STORAGE AREA CONTAINS APPROXIMATELY 37 Mtons OF OVERBURDEN AT A DENSITY OF 2 tons/cy



P:\Projects\0042.017 Haile East PAG\A-CAD\DWGS\42.017.005M.dwg-1/16/2019 11:40 AM

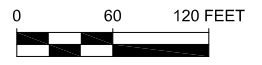
				APPROVED BY: JNM	<p style="text-align: center;"><b>DISCLAIMER</b></p> <p>NEWFIELDS PRODUCED THE INFORMATION PRESENTED ON THIS DRAWING THROUGH THE USE OF AVAILABLE TECHNICAL INFORMATION AND EXPERIENCE. RECEIVING THIS DRAWING DOES NOT GUARANTEE ANY RIGHTS TO EITHER SUCH TECHNICAL INFORMATION OR EXPERIENCE. ANY MODIFICATION OR ADAPTATION OF THE DATA OR DRAWING SHALL BE AT USER'S RISK AND WITHOUT ANY LIABILITY OR LEGAL RESPONSIBILITY TO NEWFIELDS.</p>		CLIENT <b>HAILE GOLD MINE INC.</b>	
				CHECKED BY: CTB			PROJECT <b>EAST PAG OSA</b>	
				DESIGNED BY: MJR			TITLE <b>LOADING PLAN</b>	
				DRAWN BY: MJR			FILENAME 42.017.005M DRAWING NO. <b>B15</b> REVISION <b>B</b>	
REV	DATE	DESCRIPTION	TECH	ENG				
B	01/18/19	ISSUED FOR PERMITTING	MJR	JNM				
A	01/16/19	ISSUED FOR CLIENT REVIEW	MJR	JNM				





- LEGEND:**
- EXISTING GROUND CONTOURS
  - EAST PAG OSA CONTOURS
  - EXISTING DRAINAGES
  - 4 IN DIA. PERFORATED CPe COLLECTION PIPE
  - 8 IN DIA. PERFORATED CPe COLLECTION PIPE
  - 8 IN DIA. SOLID HDPE OUTLET PIPE
  - WETLANDS
  - PROPOSED GEOMEMBRANE LIMITS
  - LIMITS OF CONCRETE

- NOTES:**
1. RUNOFF COLLECTION CHANNEL WIDENS TO ALLOW FOR CULVERTS TO BE INSTALLED BENEATH A RAMP FOR HAULAGE OF MATERIALS ONTO THE OSA.
  2. PROPOSED CONTOURS REPRESENT TOP OF LOW-PERMEABILITY SOIL LINER WITHIN THE GEOMEMBRANE LIMITS AND FINISHED GRADE EVERYWHERE ELSE.
  3. RUNOFF COLLECTION OUTLET CHANNEL SIZED TO PASS 100 YEAR, 24 HOUR STORM EVENT WITH 3 FEET OF FREEBOARD.

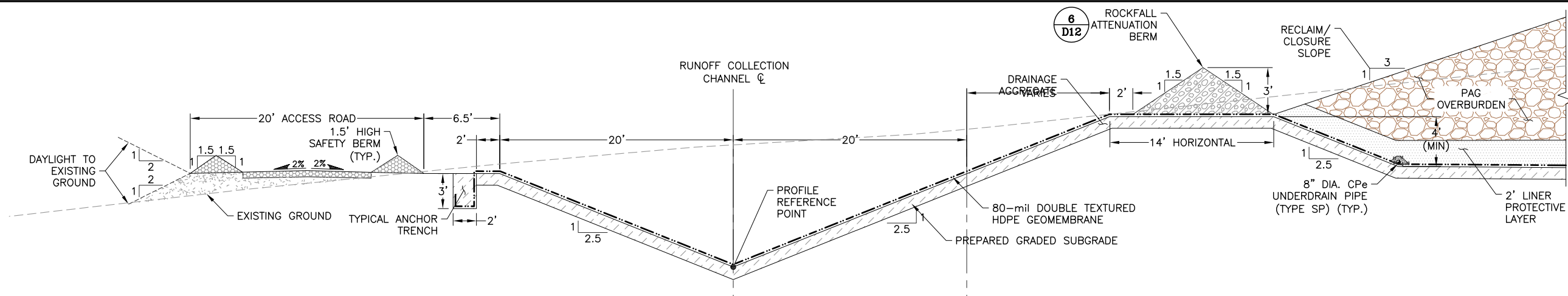


P:\Projects\0042.017 Haile East PAG\A-CAD\DWGS\42.017.004M.dwg-1/16/2019 11:57 AM

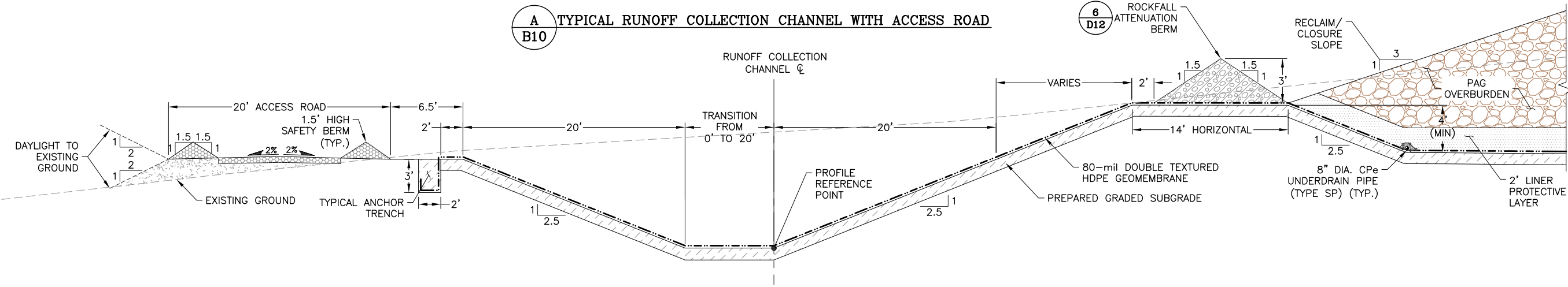
REV	DATE	DESCRIPTION	TECH	ENG
B	01/18/19	ISSUED FOR PERMITTING	MJR	JNM
A	01/16/19	ISSUED FOR CLIENT REVIEW	MJR	JNM

APPROVED BY:	JNM	<p><b>DISCLAIMER</b></p> <p>NEWFIELDS PRODUCED THE INFORMATION PRESENTED ON THIS DRAWING THROUGH THE USE OF AVAILABLE TECHNICAL INFORMATION AND EXPERIENCE. RECEIVING THIS DRAWING DOES NOT GUARANTEE ANY RIGHTS TO EITHER SUCH TECHNICAL INFORMATION OR EXPERIENCE. ANY MODIFICATION OR ADAPTATION OF THE DATA OR DRAWING SHALL BE AT USER'S RISK AND WITHOUT ANY LIABILITY OR LEGAL RESPONSIBILITY TO NEWFIELDS.</p>
CHECKED BY:	CTB	
DESIGNED BY:	MJR	
DRAWN BY:	MJR	

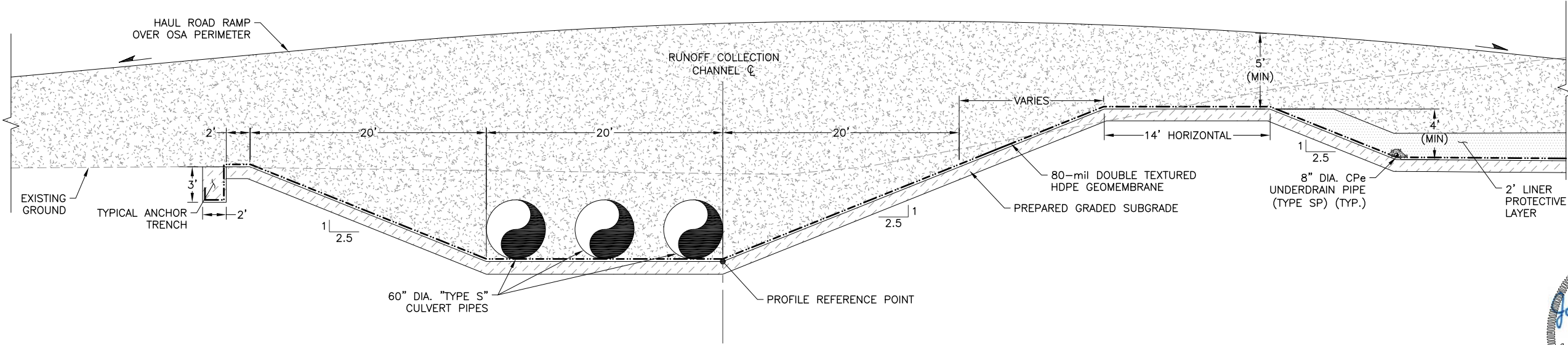
	CLIENT	HAILE GOLD MINE INC.	
	PROJECT	EAST PAG OSA	
TITLE	RUNOFF COLLECTION '500 POND' PLAN VIEW		FILENAME 42.017.004M DRAWING NO. B20 REVISION B



**A** TYPICAL RUNOFF COLLECTION CHANNEL WITH ACCESS ROAD  
**B10**



CHANNEL TRANSITION UPSTREAM AND DOWNSTREAM OF HAUL RAMP CULVERT



HAUL RAMP CROSSING OVER RUNOFF COLLECTION CHANNEL

**B** RUNOFF COLLECTION CHANNEL WIDENING SECTIONS  
**B10**



REV	DATE	DESCRIPTION	TECH	ENG
B	01/18/19	ISSUED FOR PERMITTING	MJR	JNM
A	01/16/19	ISSUED FOR CLIENT REVIEW	MJR	JNM

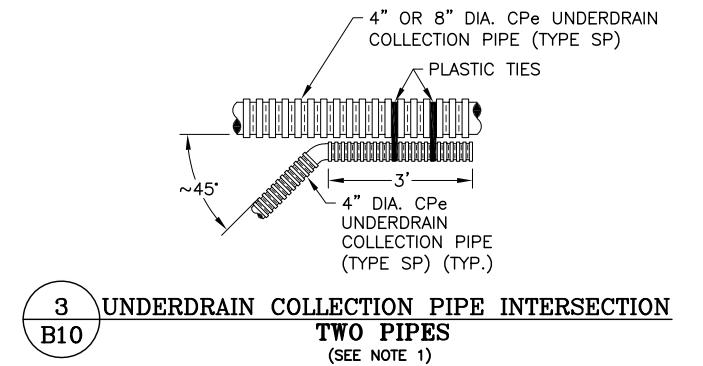
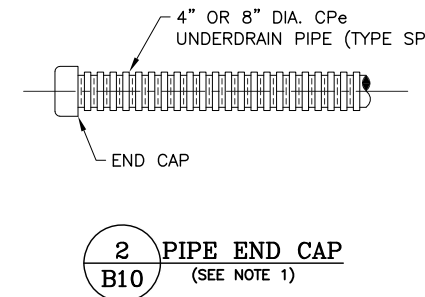
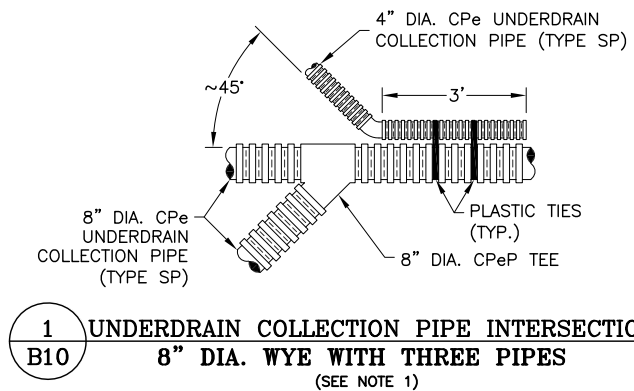
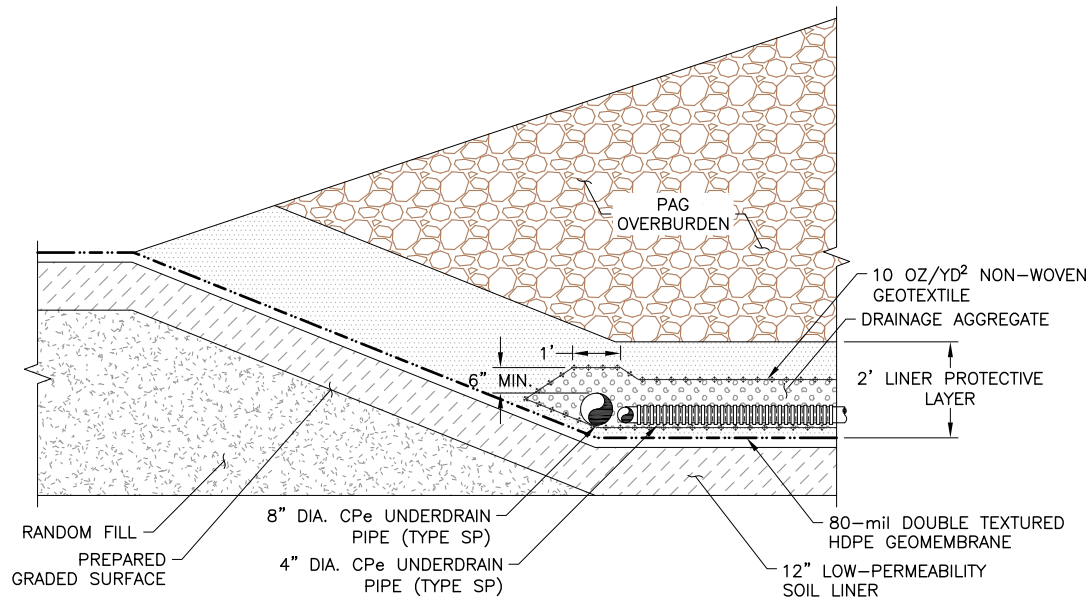
APPROVED BY:	JNM
CHECKED BY:	CTB
DESIGNED BY:	MJR
DRAWN BY:	MJR

	CLIENT	HAILE GOLD MINE INC.
	PROJECT	EAST PAG OSA
TITLE	SECTIONS AND DETAILS SHEET 1 OF 3	
	FILENAME	42.017.006D
	DRAWING NO.	D10
	REVISION	B

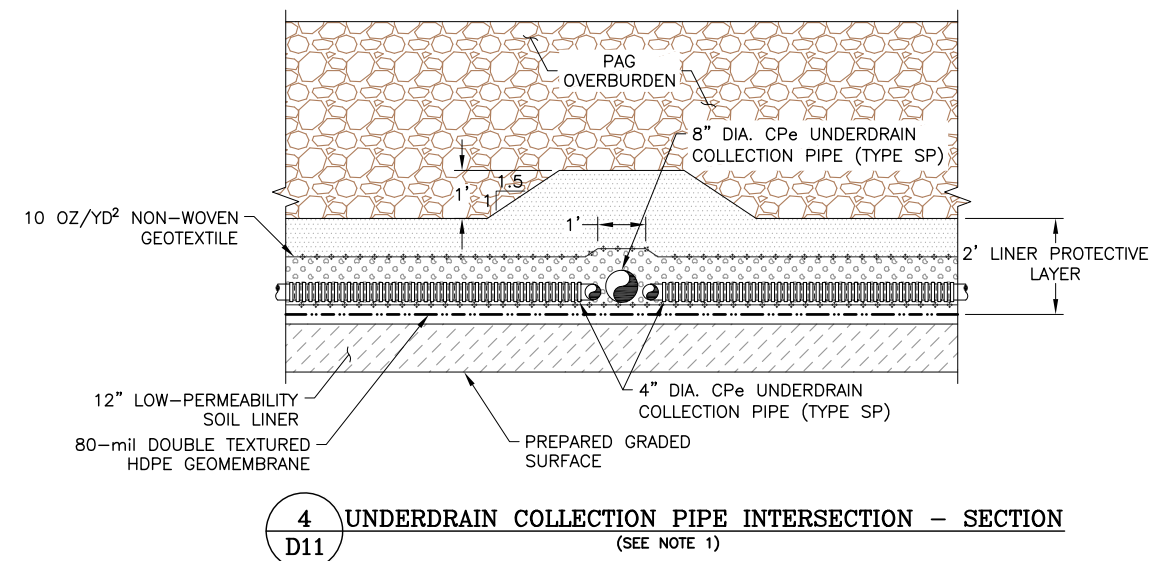
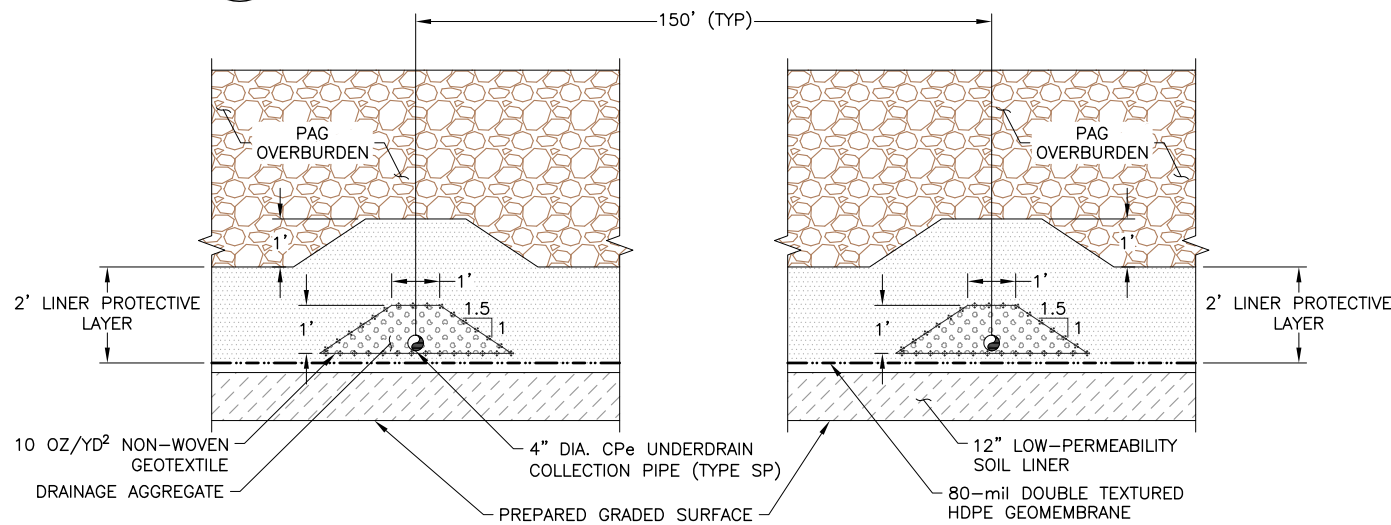
P:\Projects\0042.017 Haile East PAG\A-CAD\DWGS\42.017.006D.dwg-1/16/2019 12:32 PM

**DISCLAIMER**  
NEWFIELDS PRODUCED THE INFORMATION PRESENTED ON THIS DRAWING THROUGH THE USE OF AVAILABLE TECHNICAL INFORMATION AND EXPERIENCE. RECEIVING THIS DRAWING DOES NOT GUARANTEE ANY RIGHTS TO EITHER SUCH TECHNICAL INFORMATION OR EXPERIENCE. ANY MODIFICATION OR ADAPTATION OF THE DATA OR DRAWING SHALL BE AT USER'S RISK AND WITHOUT ANY LIABILITY OR LEGAL RESPONSIBILITY TO NEWFIELDS.

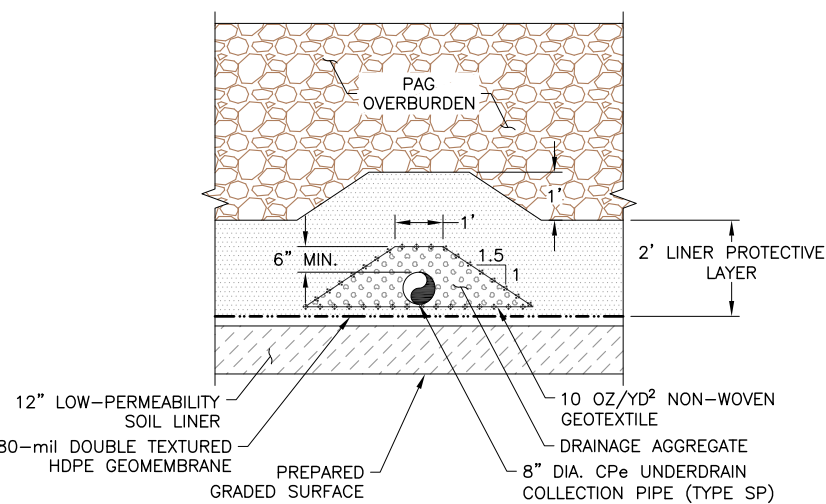




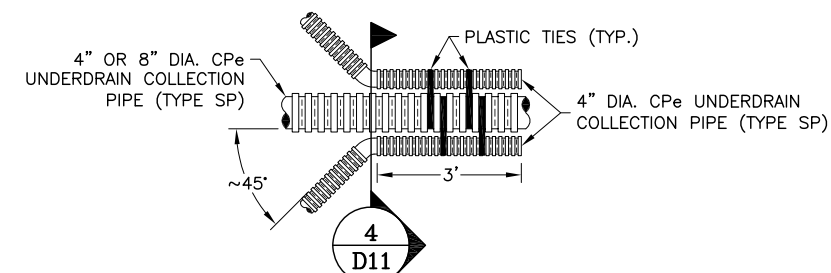
**C** UNDERDRAIN COLLECTION PIPE AT BERM  
B10 (SEE NOTE 1)



**D** TYPICAL UNDERDRAIN COLLECTION PIPE - 4" DIA CPeP  
B10 (SEE NOTE 1)



- NOTES:**
1. ALL UPSTREAM OPEN ENDS OF PIPES TO BE CAPPED.



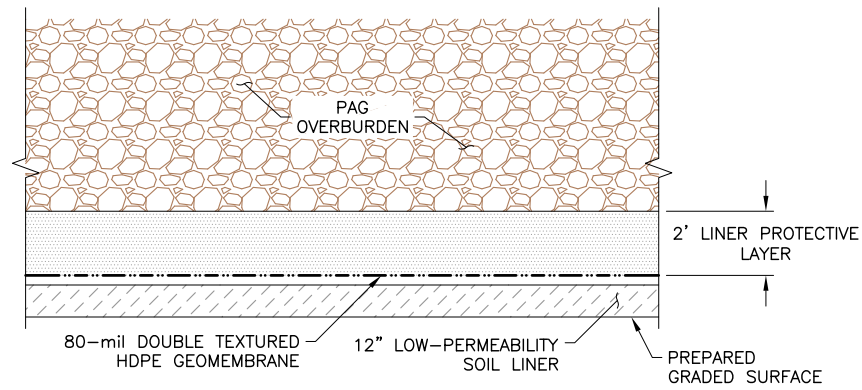
**5** UNDERDRAIN COLLECTION PIPE INTERSECTION  
B10 THREE PIPES (SEE NOTE 1)

**E** TYPICAL UNDERDRAIN COLLECTION PIPE - 8" DIA CPeP  
B10 (SEE NOTE 1)

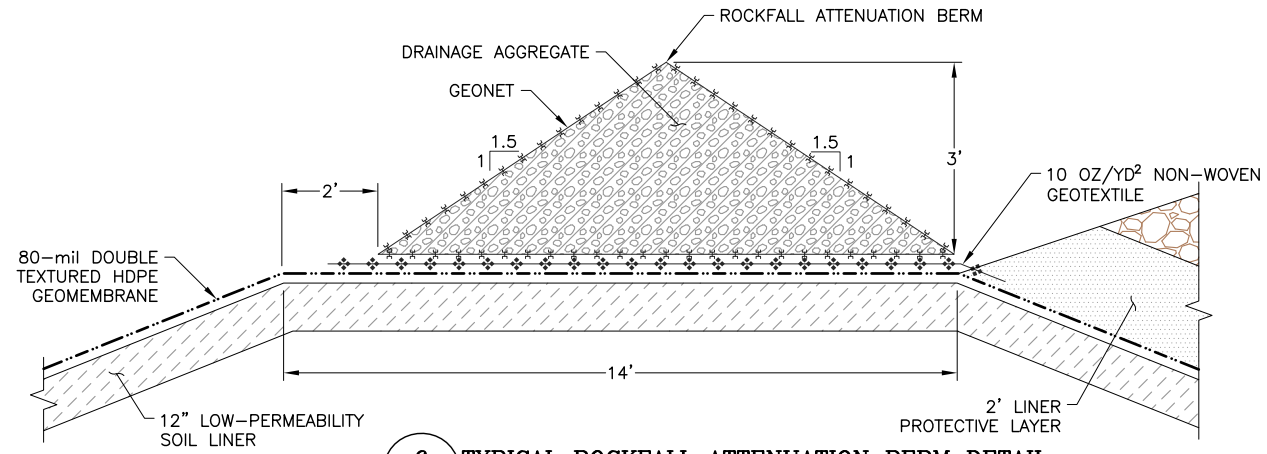


APPROVED BY: JNM		DISCLAIMER		CLIENT: HAILE GOLD MINE INC.	
CHECKED BY: CTB		NEWFIELDS PRODUCED THE INFORMATION PRESENTED ON THIS DRAWING THROUGH THE USE OF AVAILABLE TECHNICAL INFORMATION AND EXPERIENCE. RECEIVING THIS DRAWING DOES NOT GUARANTEE ANY RIGHTS TO EITHER SUCH TECHNICAL INFORMATION OR EXPERIENCE. ANY MODIFICATION OR ADAPTATION OF THE DATA OR DRAWING SHALL BE AT USER'S RISK AND WITHOUT ANY LIABILITY OR LEGAL RESPONSIBILITY TO NEWFIELDS.		PROJECT: EAST PAG OSA	
DESIGNED BY: MJR		DRAWN BY: MJR		TITLE: SECTIONS AND DETAILS SHEET 2 OF 3	
B	01/18/19	ISSUED FOR PERMITTING	MJR	JNM	FILENAME: 42.017.011D
A	01/16/19	ISSUED FOR CLIENT REVIEW	MJR	JNM	DRAWING NO. D11
REV	DATE	DESCRIPTION	TECH	ENG	REVISION: B

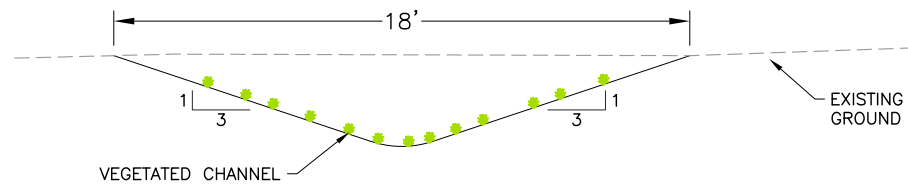
P:\Projects\0042.017 Haile East PAG\A-CAD\DWGS\42.017.011D.dwg-1/16/2019 12:34 PM



**F**  
**B10** TYPICAL LINER DETAIL



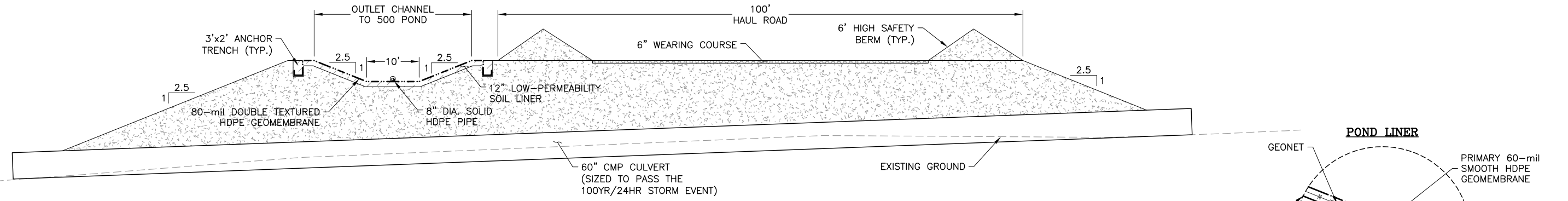
**6**  
**D10** TYPICAL ROCKFALL ATTENUATION BERM DETAIL



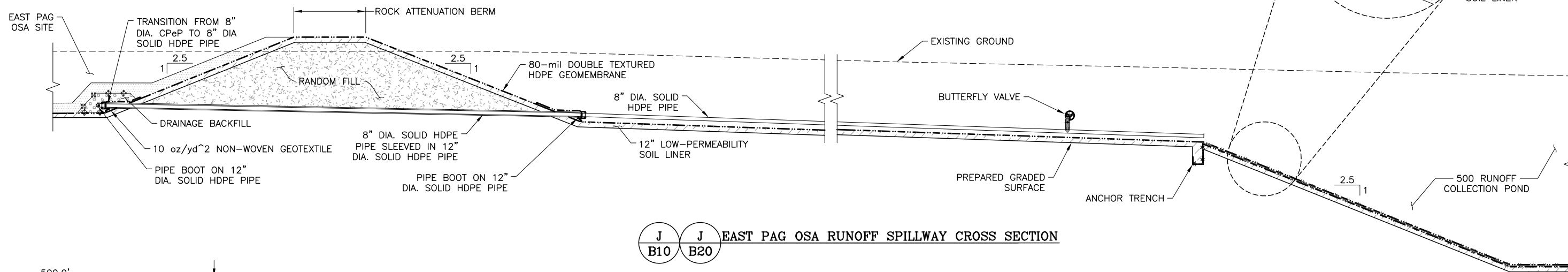
**G**  
**B10** TYPICAL DIVERSION CHANNEL



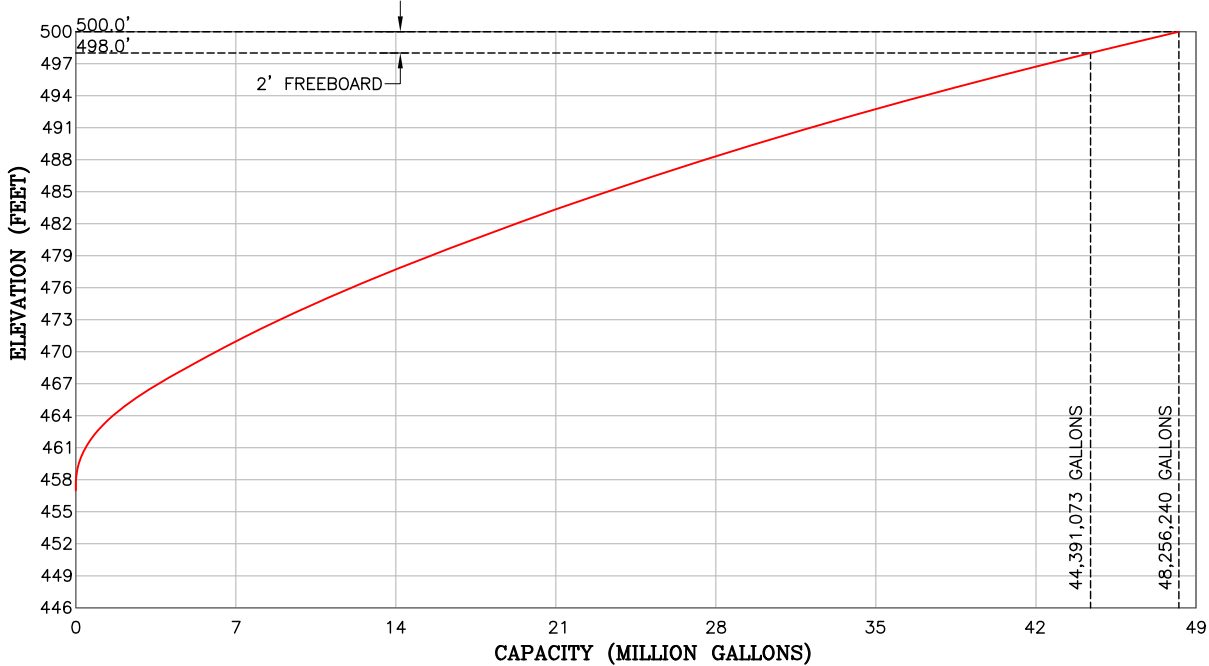
		APPROVED BY: JNM	DISCLAIMER			CLIENT	HAILE GOLD MINE INC.	
		CHECKED BY: CTB	NEWFIELDS PRODUCED THE INFORMATION PRESENTED ON THIS DRAWING THROUGH THE USE OF AVAILABLE TECHNICAL INFORMATION AND EXPERIENCE. RECEIVING THIS DRAWING DOES NOT GUARANTEE ANY RIGHTS TO EITHER SUCH TECHNICAL INFORMATION OR EXPERIENCE. ANY MODIFICATION OR ADAPTATION OF THE DATA OR DRAWING SHALL BE AT USER'S RISK AND WITHOUT ANY LIABILITY OR LEGAL RESPONSIBILITY TO NEWFIELDS.			PROJECT	EAST PAG OSA	
B	01/18/19	ISSUED FOR PERMITTING	MJR	JNM	TITLE	SECTIONS AND DETAILS		FILENAME
A	01/16/19	ISSUED FOR CLIENT REVIEW	MJR	JNM		SHEET 3 OF 3		42.017.010D
REV	DATE	DESCRIPTION	TECH	ENG	DRAWN BY: MJR	DRAWING NO.	REVISION	
						D12	B	



**H B10 H B20 EAST PAG OSA RUNOFF SPILLWAY CROSS SECTION**



**J B10 J B20 EAST PAG OSA RUNOFF SPILLWAY CROSS SECTION**



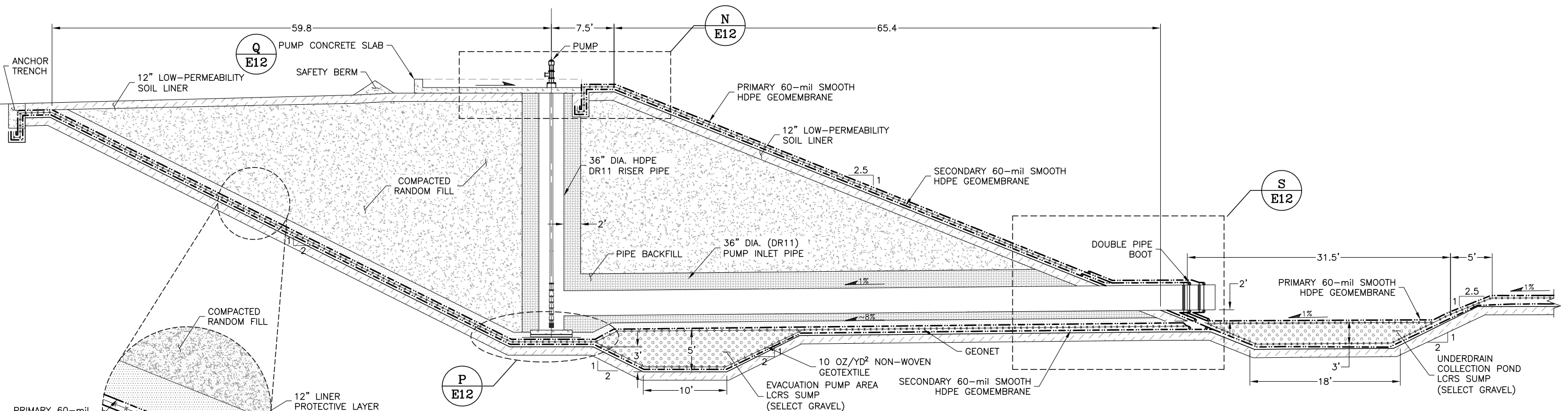
**500 RUNOFF COLLECTION POND FILLING CURVE**



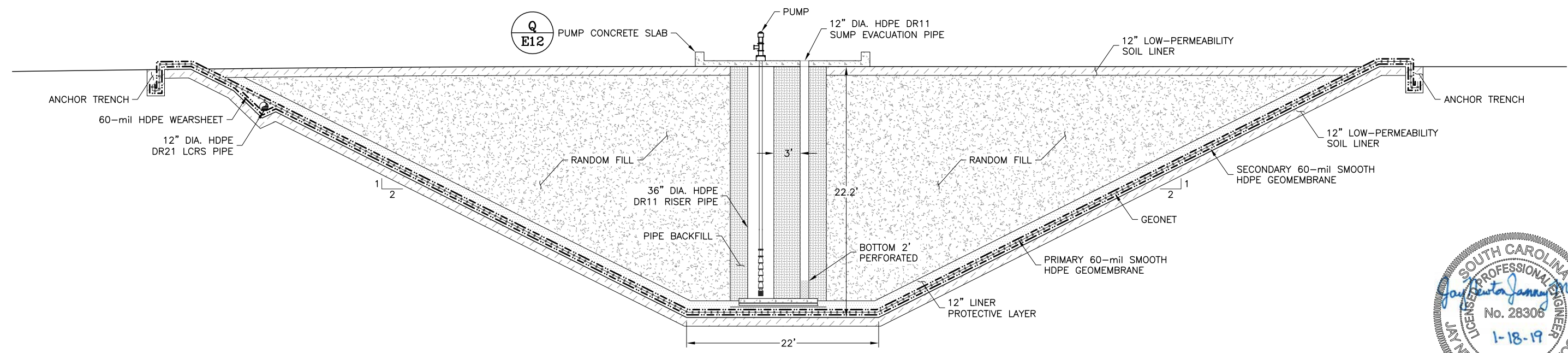
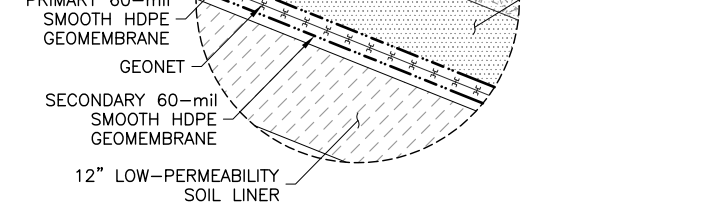
APPROVED BY: JNM		<b>DISCLAIMER</b> NEWFIELDS PRODUCED THE INFORMATION PRESENTED ON THIS DRAWING THROUGH THE USE OF AVAILABLE TECHNICAL INFORMATION AND EXPERIENCE. RECEIVING THIS DRAWING DOES NOT GUARANTEE ANY RIGHTS TO EITHER SUCH TECHNICAL INFORMATION OR EXPERIENCE. ANY MODIFICATION OR ADAPTATION OF THE DATA OR DRAWING SHALL BE AT USER'S RISK AND WITHOUT ANY LIABILITY OR LEGAL RESPONSIBILITY TO NEWFIELDS.		CLIENT	HAILE GOLD MINE INC.	
CHECKED BY: CTB				PROJECT	EAST PAG OSA	
DESIGNED BY: MJR				TITLE	500 POND SECTIONS AND DETAILS SHEET 1 OF 4	
DRAWN BY: MJR				FILENAME	42.017.012M	REVISION
REV	DATE	DESCRIPTION	TECH	ENG		
B	01/18/19	ISSUED FOR PERMITTING	MJR	JNM		
A	01/16/19	ISSUED FOR CLIENT REVIEW	MJR	JNM		

P:\Projects\0042.017 Haile East PAG\A-CAD\DWGS\42.017.012M.dwg-1/16/2019 11:29 AM





**K RUNOFF COLLECTION POND EVACUATION SUMP CROSS SECTION**  
B20



**L RUNOFF COLLECTION POND EVACUATION SUMP CROSS SECTION**  
B20

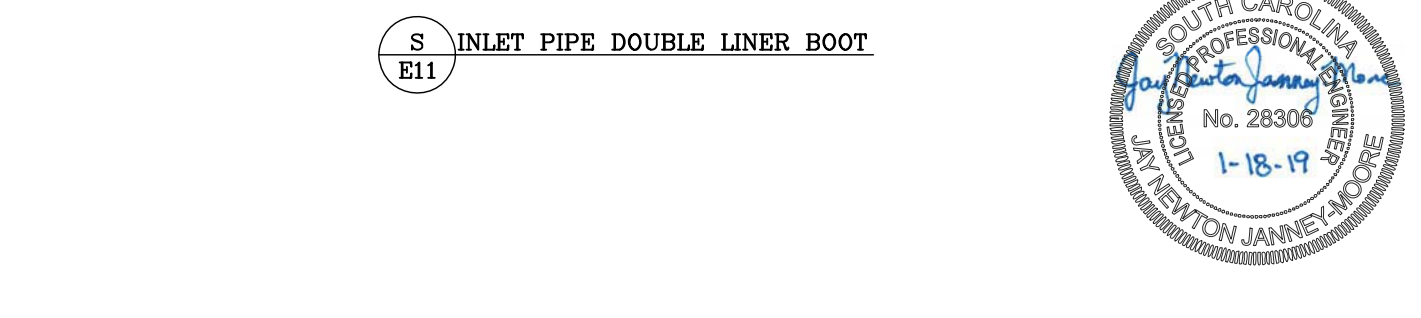
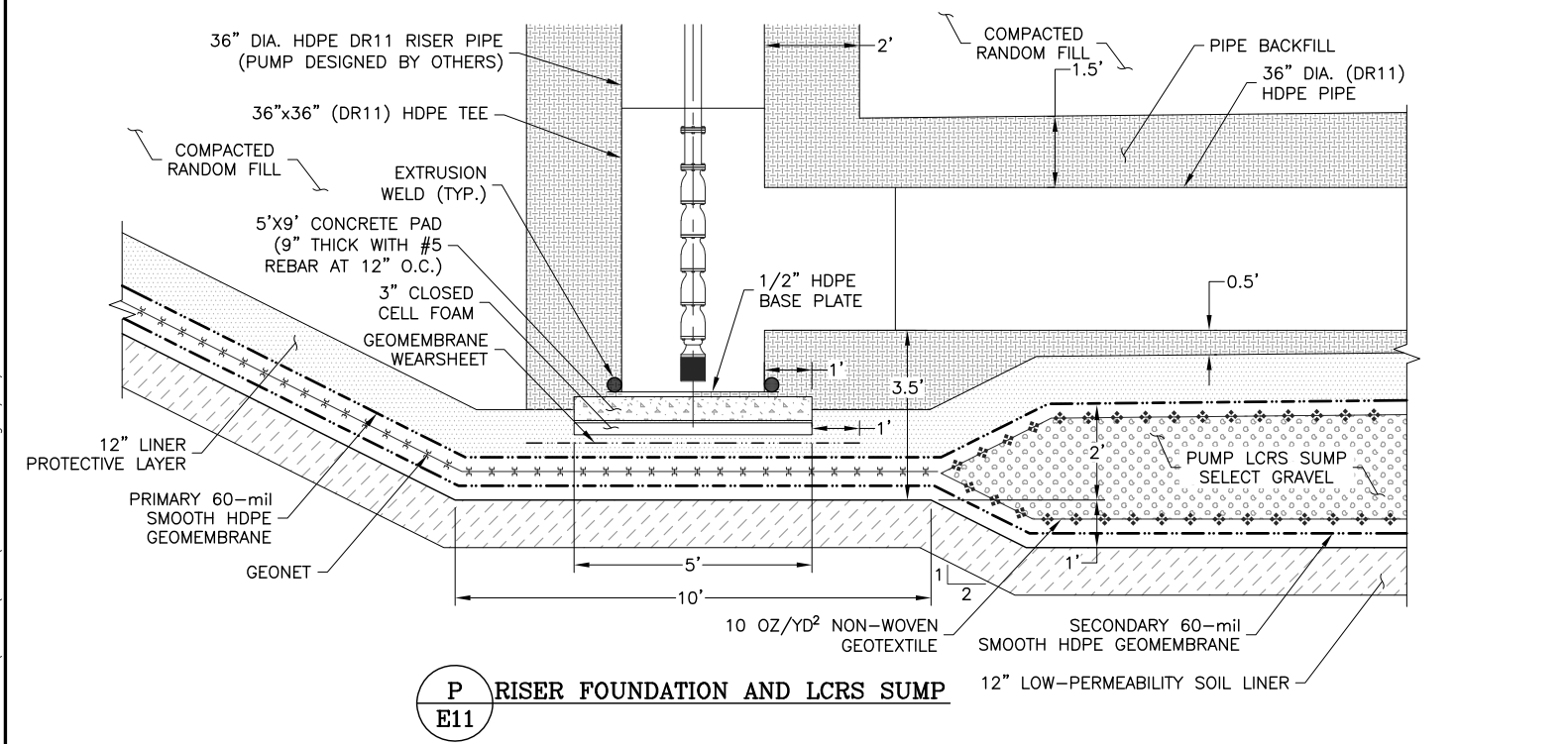
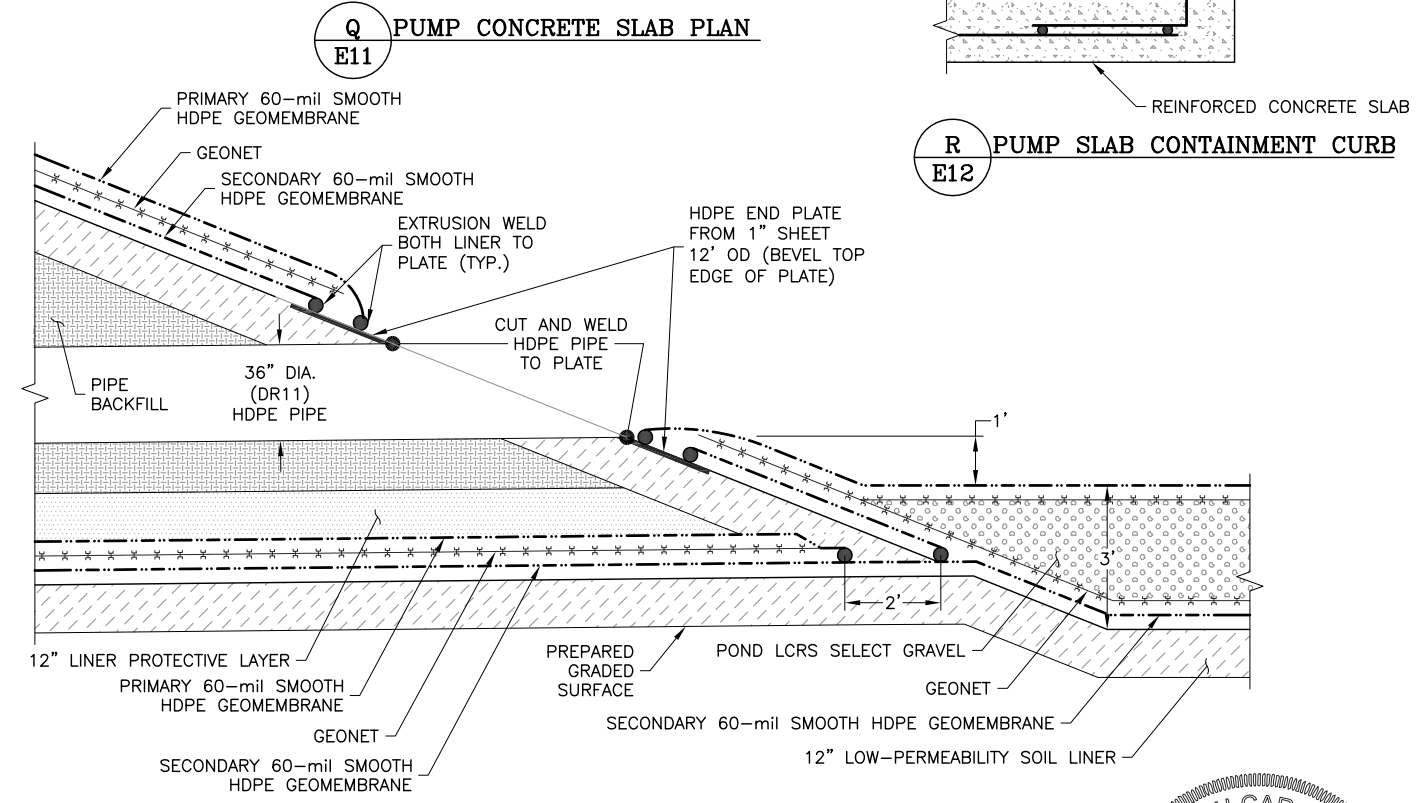
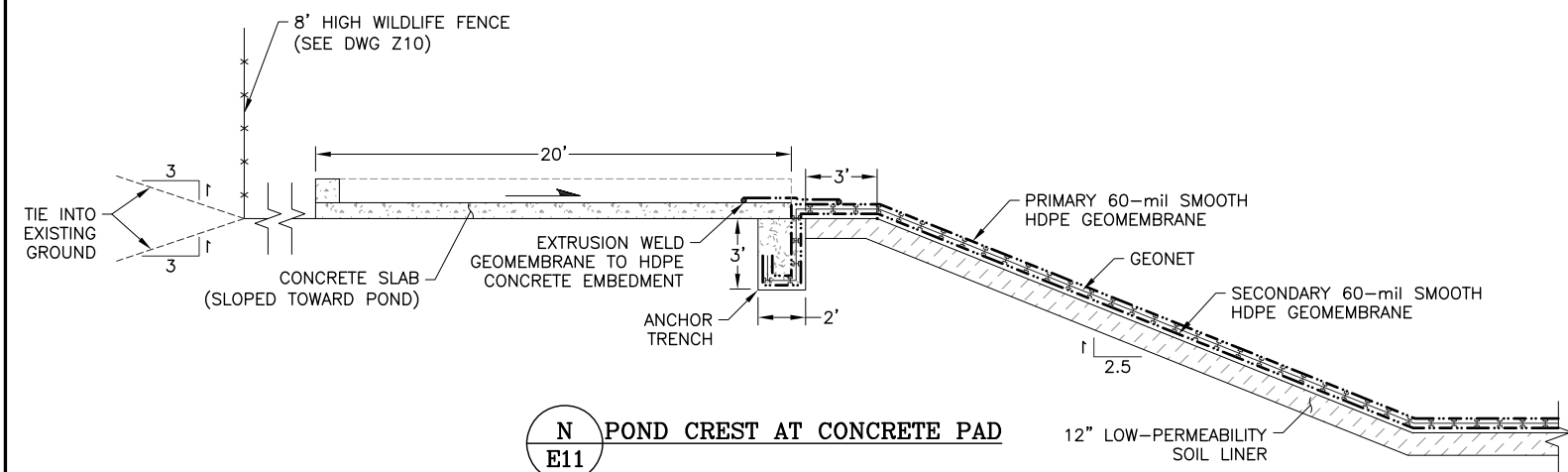
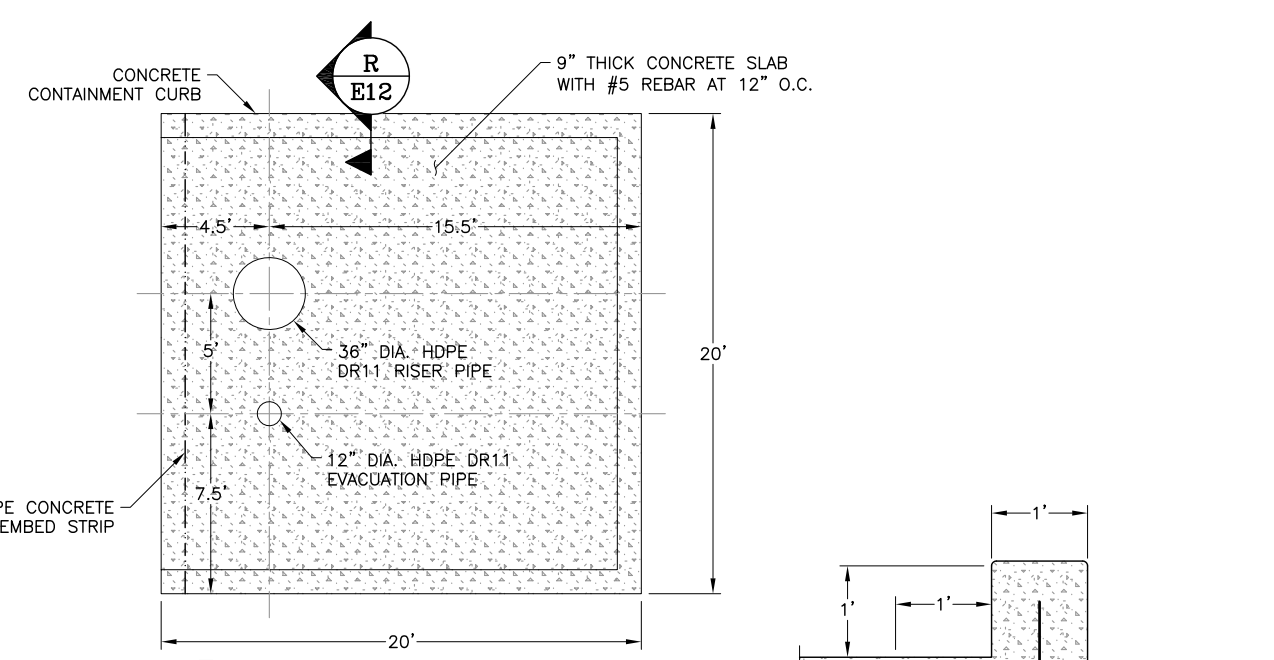
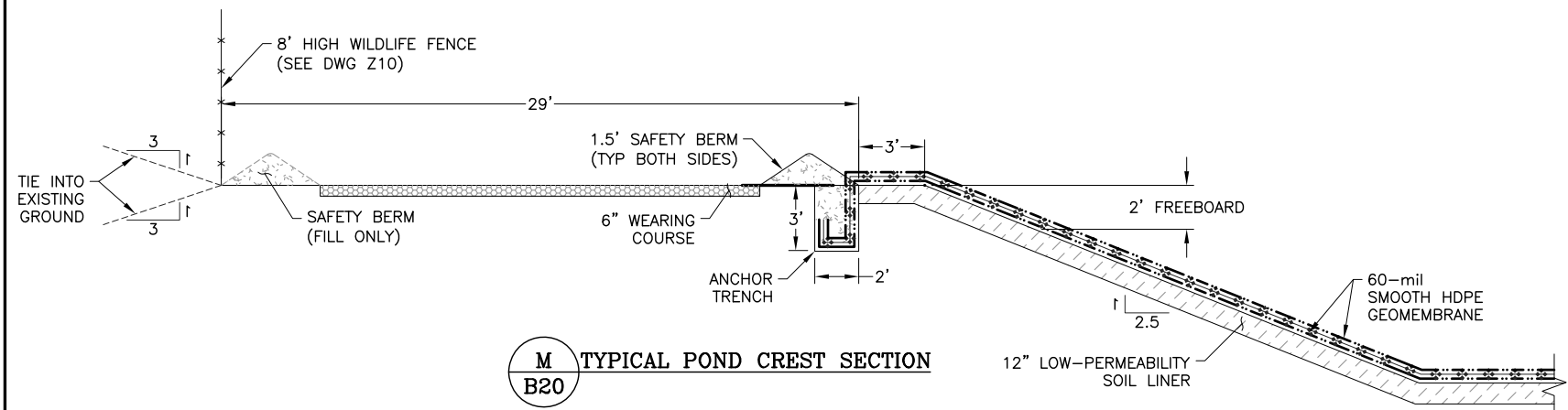


REV	DATE	DESCRIPTION	TECH	ENG
B	01/18/19	ISSUED FOR PERMITTING	MJR	JNM
A	01/16/19	ISSUED FOR CLIENT REVIEW	MJR	JNM

APPROVED BY:	JNM
CHECKED BY:	CTB
DESIGNED BY:	MJR
DRAWN BY:	MJR

<b>NewFields</b>		CLIENT	HAILE GOLD MINE INC.
PROJECT		EAST PAG OSA	
TITLE		500 POND SECTIONS AND DETAILS SHEET 2 OF 4	
FILENAME	42.017.007D	DRAWING NO.	E11
REVISION	B		

P:\Projects\0042.017 Haile East PAG\A-CAD\DWGS\42.017.007D.dwg-1/16/2019 11:30 AM

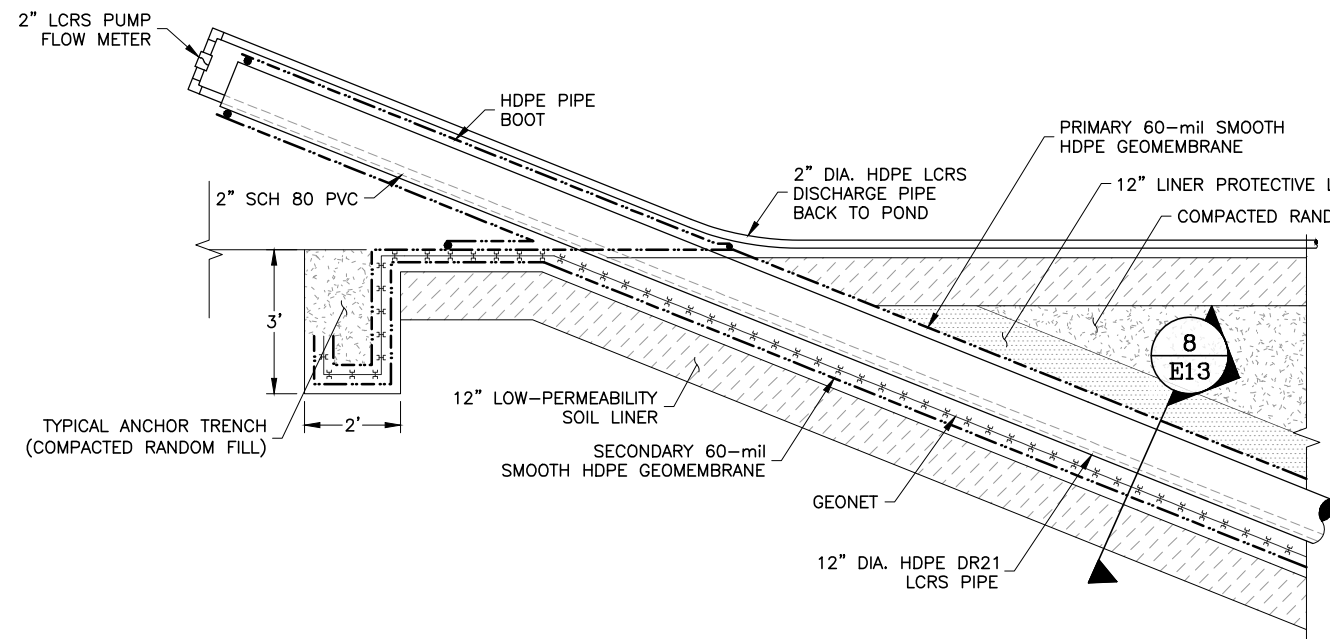


				APPROVED BY:	DISCLAIMER		NewFields		CLIENT	HAILE GOLD MINE INC.	
				JNM	NEWFIELDS PRODUCED THE INFORMATION PRESENTED ON THIS DRAWING THROUGH THE USE OF AVAILABLE TECHNICAL INFORMATION AND EXPERIENCE. RECEIVING THIS DRAWING DOES NOT GUARANTEE ANY RIGHTS TO EITHER SUCH TECHNICAL INFORMATION OR EXPERIENCE. ANY MODIFICATION OR ADAPTATION OF THE DATA OR DRAWING SHALL BE AT USER'S RISK AND WITHOUT ANY LIABILITY OR LEGAL RESPONSIBILITY TO NEWFIELDS.				PROJECT		EAST PAG OSA
				CHECKED BY:					TITLE		500 POND SECTIONS AND DETAILS SHEET 3 OF 4
				CTB					FILENAME		42.017.008D
				DESIGNED BY:					DRAWING NO.		E12
				MJR					REVISION		B
				MJR							
				DRAWN BY:							
				MJR							
B	01/18/19	ISSUED FOR PERMITTING		MJR	JNM						
A	01/16/19	ISSUED FOR CLIENT REVIEW		MJR	JNM						
REV	DATE	DESCRIPTION		TECH	ENG						

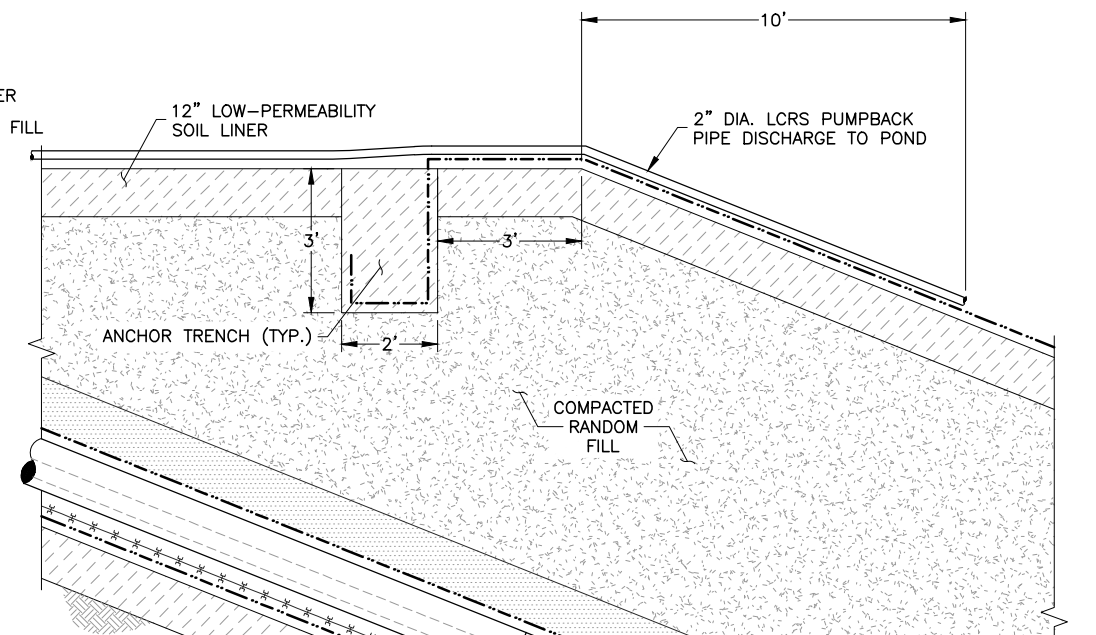
P:\Projects\0042.017 Haile East PAG\A-CAD\DWGS\42.017.008D.dwg-1/16/2019 11:31 AM



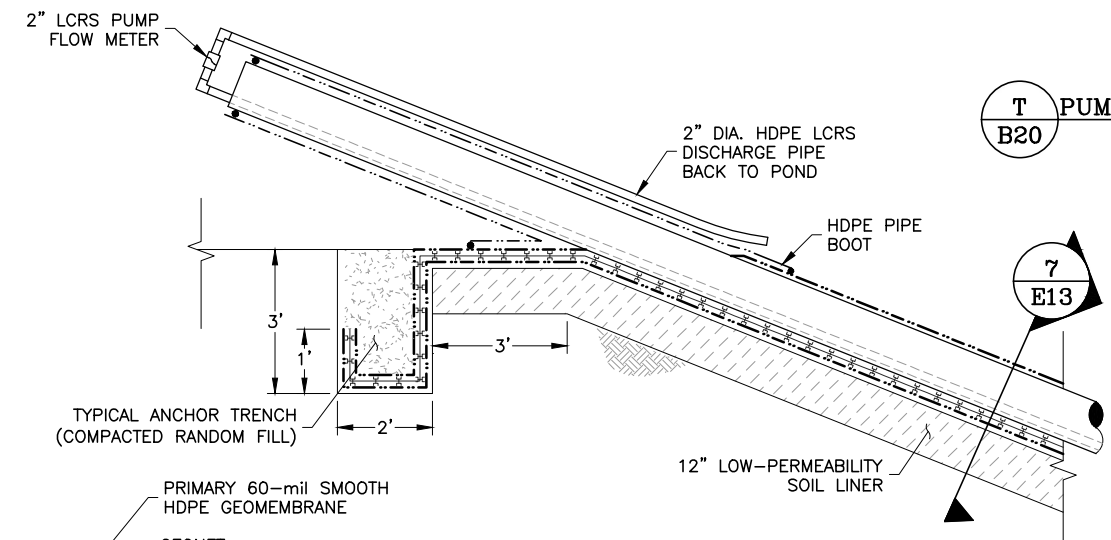
P:\Projects\0042.017 Haile East PAG\A-CAD\DWGS\42.017.009D.dwg-1/16/2019 11:32 AM



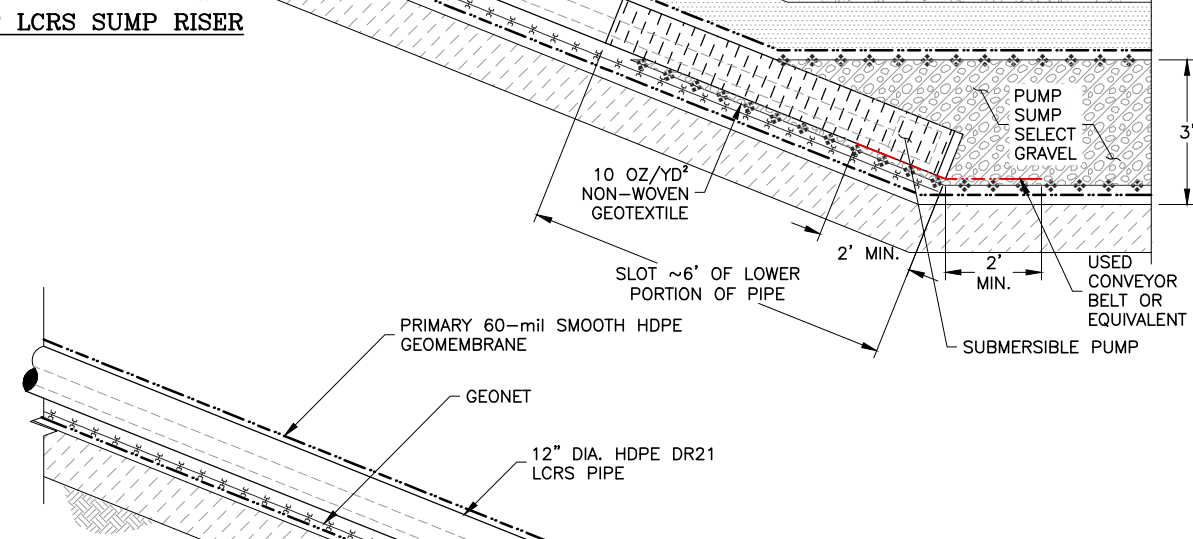
8  
E13



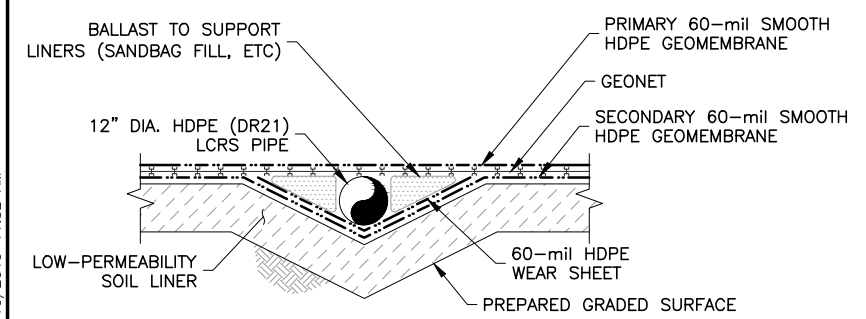
T  
B20  
PUMP LCRS SUMP RISER



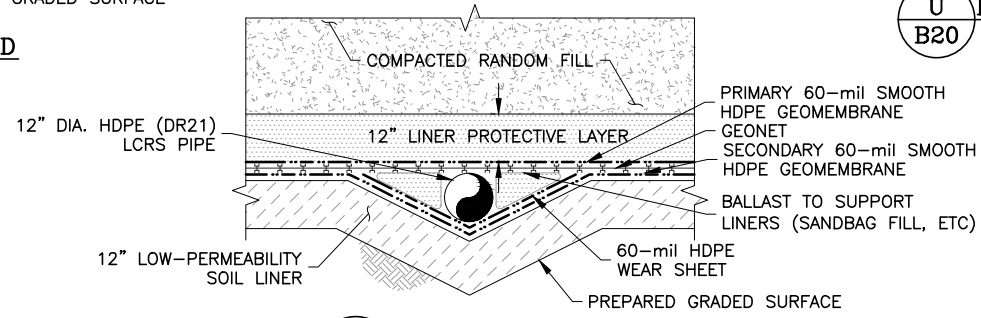
7  
E13



U  
B20  
POND LCRS SUMP RISER



7  
E13  
LCRS PIPE IN POND



8  
E13  
LCRS PIPE IN POND SUMP



REV	DATE	DESCRIPTION	TECH	ENG
B	01/18/19	ISSUED FOR PERMITTING	MJR	JNM
A	01/16/19	ISSUED FOR CLIENT REVIEW	MJR	JNM

APPROVED BY:	JNM
CHECKED BY:	CTB
DESIGNED BY:	MJR
DRAWN BY:	MJR

**NewFields** CLIENT: HAILE GOLD MINE INC.

PROJECT: EAST PAG OSA

TITLE: 500 POND SECTIONS AND DETAILS SHEET 4 OF 4

FILENAME: 42.017.009D

DRAWING NO.: E13 REVISION: B

**DISCLAIMER**  
 NEWFIELDS PRODUCED THE INFORMATION PRESENTED ON THIS DRAWING THROUGH THE USE OF AVAILABLE TECHNICAL INFORMATION AND EXPERIENCE. RECEIVING THIS DRAWING DOES NOT GUARANTEE ANY RIGHTS TO EITHER SUCH TECHNICAL INFORMATION OR EXPERIENCE. ANY MODIFICATION OR ADAPTATION OF THE DATA OR DRAWING SHALL BE AT USER'S RISK AND WITHOUT ANY LIABILITY OR LEGAL RESPONSIBILITY TO NEWFIELDS.