

Since monitored concentrations have remained well below established guidelines and New Indy must continue to report results from their required monitoring, DHEC will suspend facility boundary Hydrogen Sulfide monitoring and daily reporting in the fourth quarter of 2023. Monitoring may resume if there is an increase in on-site monitored concentrations or a significant change in operations associated with potential odor sources.

## Air Monitoring Summary Tables

This table summarizes monitoring data collected using DHEC monitors and EPA's Viper wireless remote monitoring system.



**Project Name:** H<sub>2</sub>S in South Carolina

**From:** 1/2/24  
12:00 AM  
EST

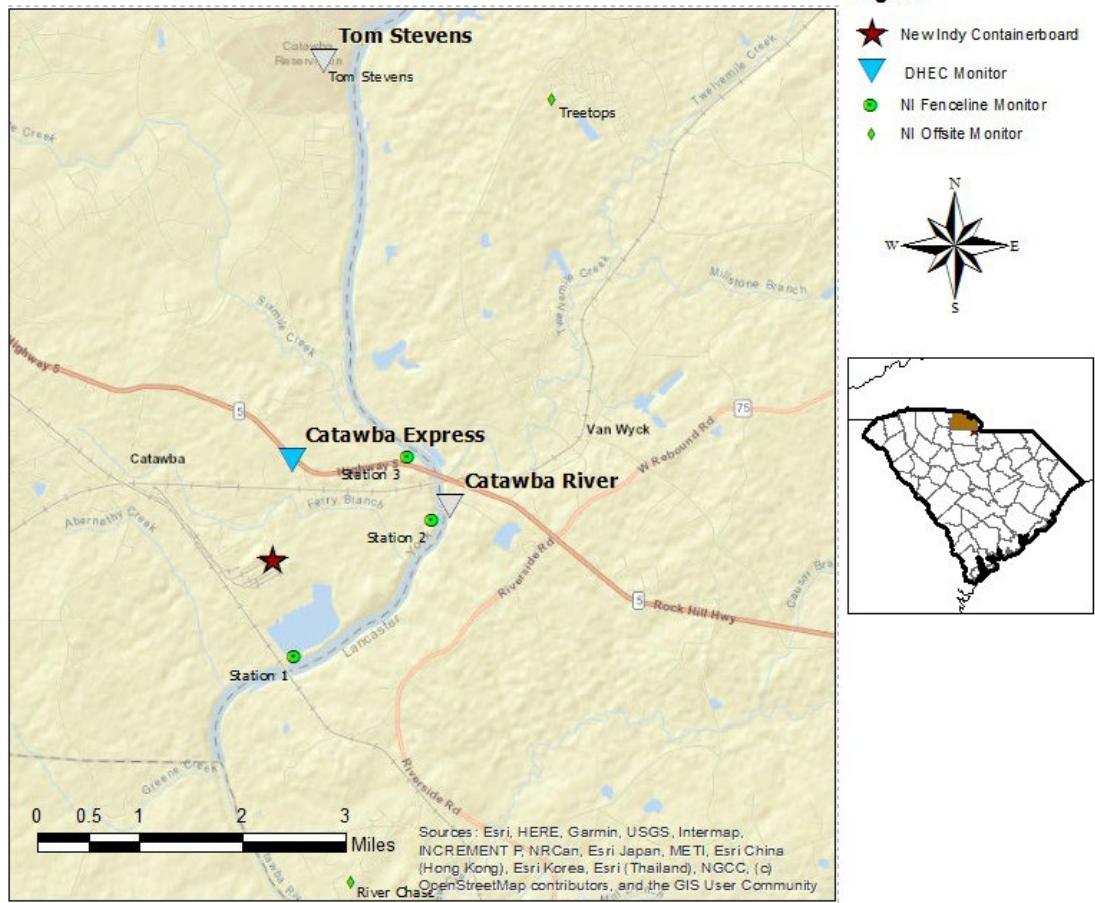
**To:** 1/2/24  
11:59 PM  
EST

Catawba Express							
Instrument	Analyte	ATSDR MRL Exceedance?	Number of Readings	Number of Detections	Concentration Range	Period Average	ATSDR MRL
SPM Flex 2	H <sub>2</sub> S	No	8165	3565	0 - 5 ppb	1.02 ppb	70 ppb

**Notes:**

Hydrogen sulfide concentrations presented in this data summary table are converted from parts per million, the instrument readout units, to parts per billion. The SPM FLEX Minimum Detectable Limit (MDL) is 1 ppb of Hydrogen Sulfide.

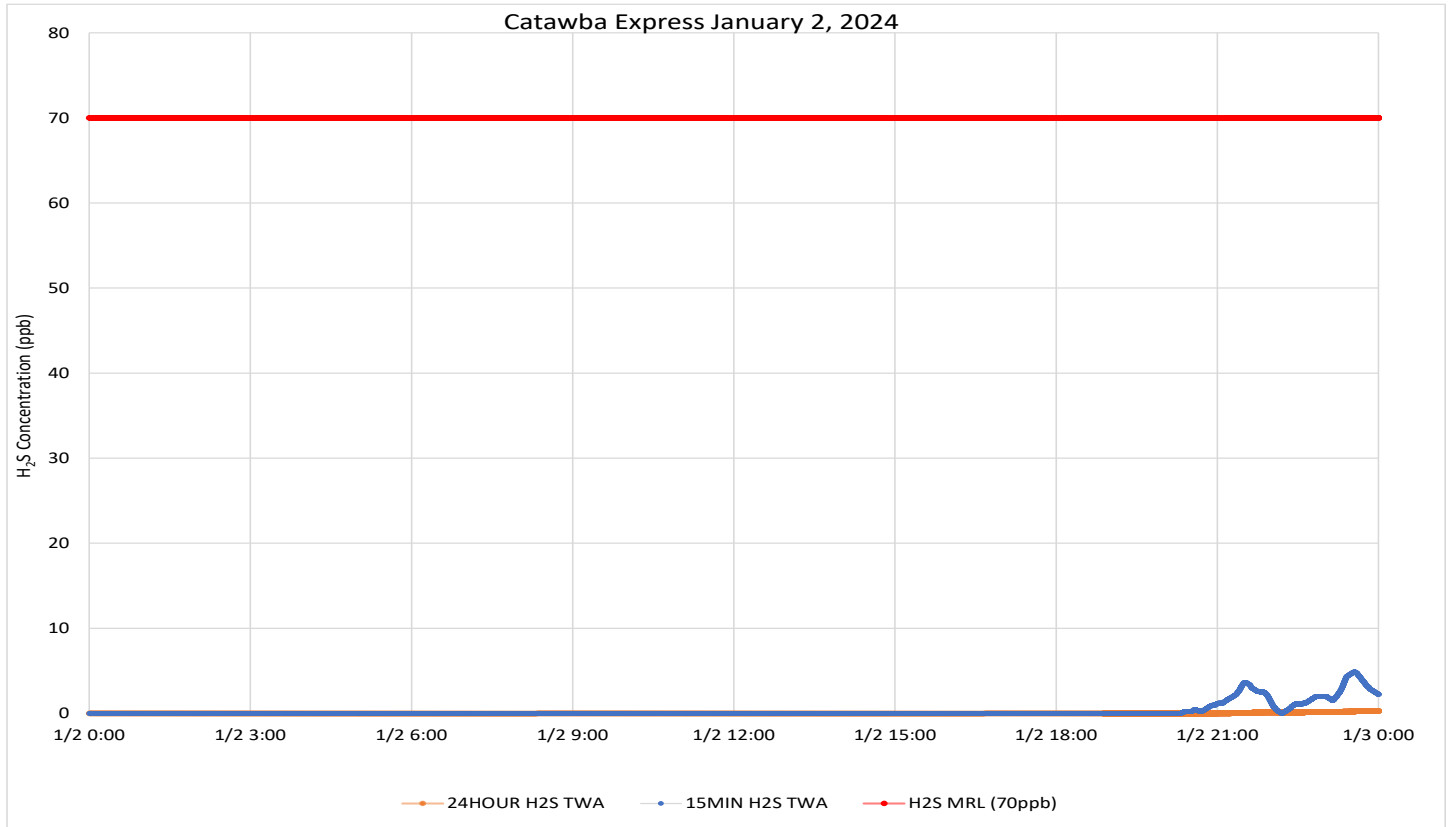
- ATSDR MRL Agency for Toxic Substances and Disease Registry Minimal Risk Level - Acute Exposure (<14 days)
- H<sub>2</sub>S Hydrogen Sulfide
- hr Hour
- ppb Parts per billion
- MRL Exceedance Defines if the 24-hr TWA exceeded the MRL at any time during the period of this report
- SPM Single Point Monitor
- TWA Time Weighted Average



# H<sub>2</sub>S in South Carolina

## Hydrogen Sulfide 15-min and 24-hr Time Weighted Average Graphs

Wind was light and variable to calm during the daylight hours. Before midday, wind was generally from the north. After 4PM, wind had shifted to coming from the west southwest, becoming more southerly (S-SSW) in the late evening.



Notes: Time is Eastern Standard Time H<sub>2</sub>S – Hydrogen Sulfide MRL – Minimal Risk Level ppb – Parts per billion Wind data for KUZA